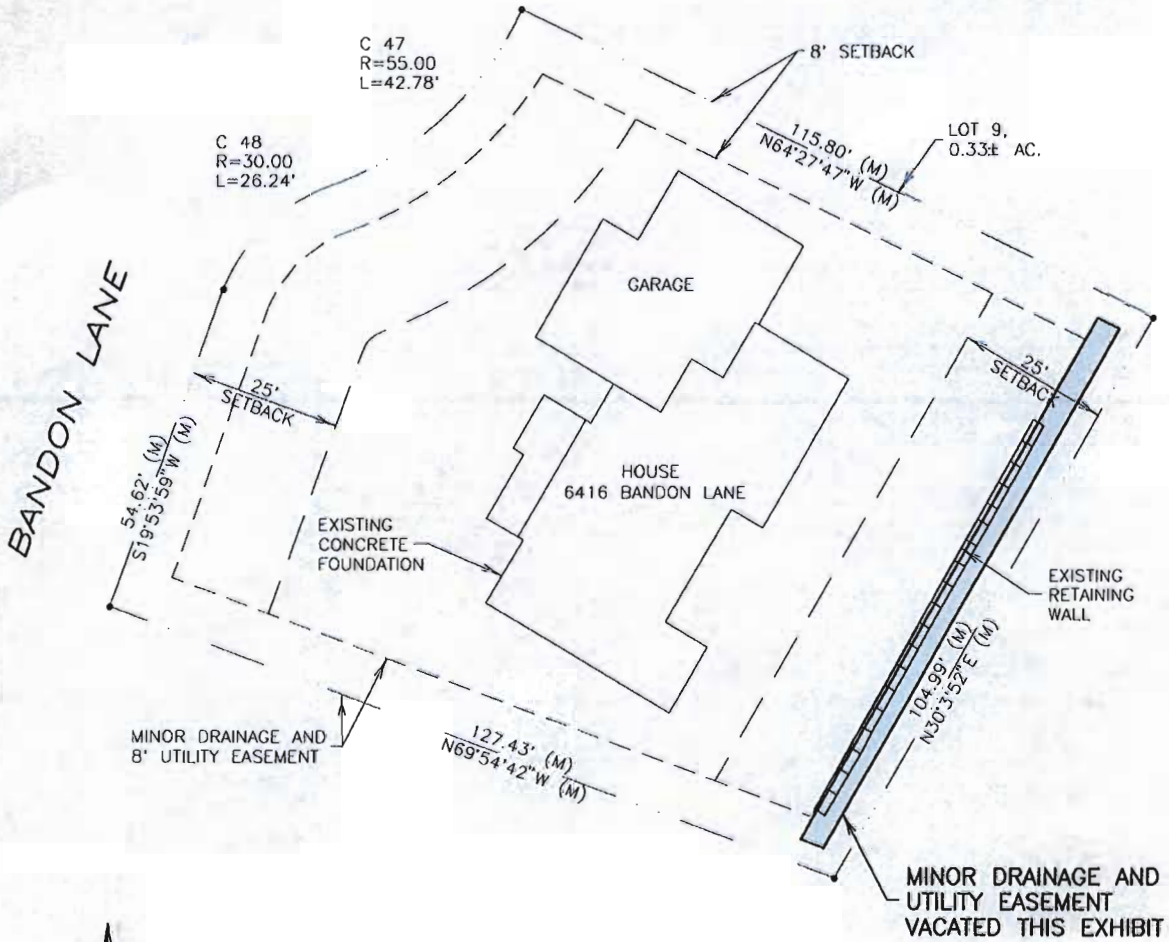


EXHIBIT "A"

LOT 9 OF BLOCK 22 OF RED ROCK ESTATES
LOCATED IN NE1/4, NE1/4 OF SECTION 29, T1N, R7E, BHM.
RAPID CITY, PENNINGTON COUNTY, SOUTH DAKOTA



NOTE:
PLATTED DISTANCE AND BEARINGS RECORDED IN PLAT BOOK 33, PAGE 151 (1, 2, 3). MEASURED DISTANCES AND BEARINGS SHOWN HEREON.

