

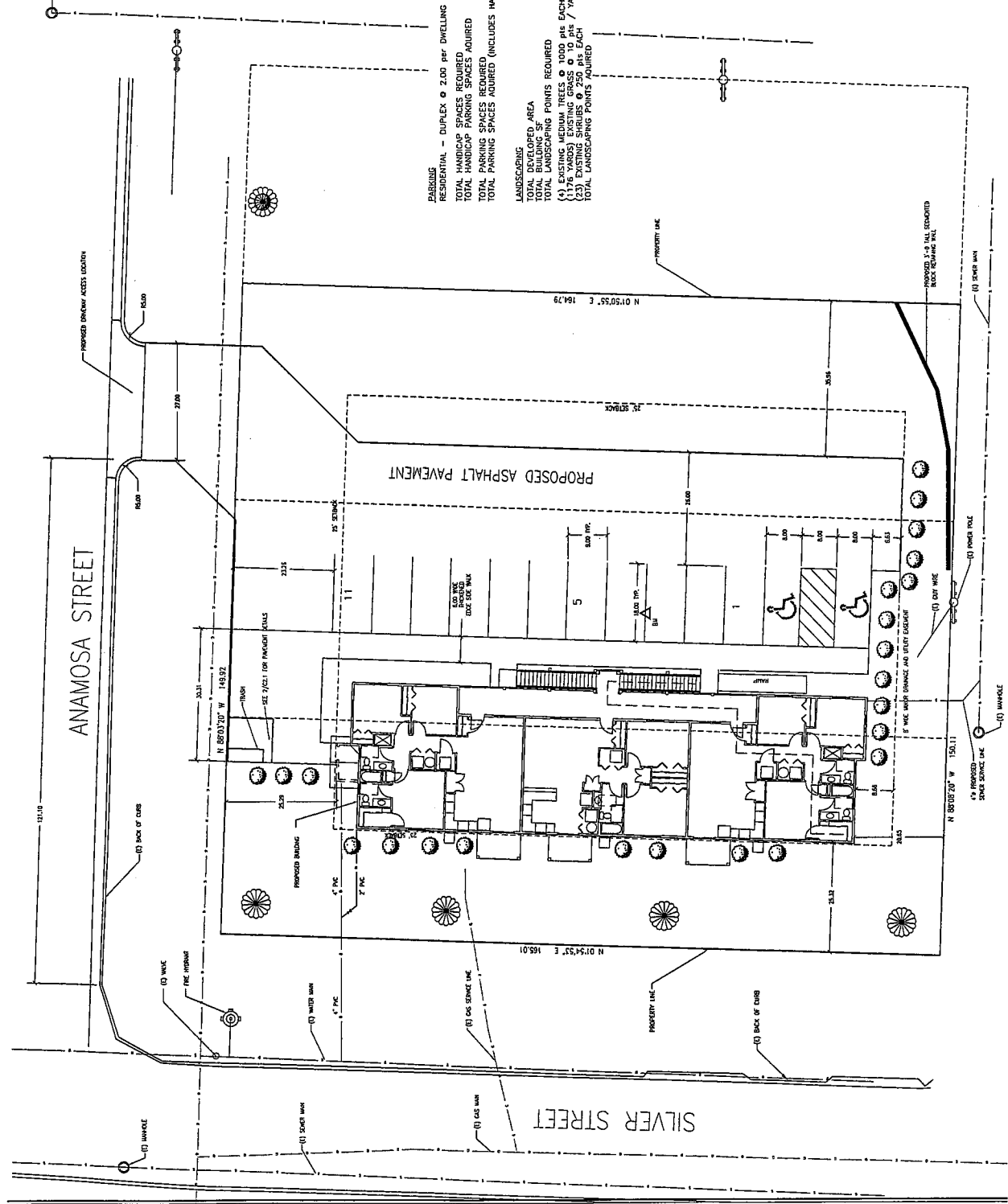
- ▲ BENCHMARK - CENTER MARK II  
ELEVATION = 350.00
- CONTOUR INTERVAL - 1'-0" (TOP)
- DRAINAGE MARKS - ---
- EXISTING CONTOUR
- PROPOSED CONTOUR
- WALKWAY - PROPOSED
- SPOT ELEVATION

**LOTS 12 THRU 14, BLK. 14  
 OF SCOTT'S ADDITION  
 6th ST.  
 RAPID CITY, PENNINGTON COUNTY, SOUTH DAKOTA**

**PROPOSED  
 SITE PLAN**

PROJECT NO. 06-009 DRAWING NO.  
**C1.2**

DATE: 03-16-09  
 SCALE: AS SHOWN  
*If this drawing is not 24" x 36" it is a reduced print.*



- PARKINGS**
- RESIDENTIAL - DUPLEX @ 2.00 PPR DWELLING = 12.00 SPACES
  - TOTAL HANDICAP SPACES REQUIRED = 1 SPACE
  - TOTAL HANDICAP PARKING SPACES ACQUIRED = 1 SPACE
  - TOTAL PARKING SPACES REQUIRED = 13.00 SPACES
  - TOTAL PARKING SPACES ACQUIRED (INCLUDES HANDICAP SPACES) = 13.00 SPACES

- LANDSCAPING**
- EXISTING TREES, AREA = 24,716 SF
  - TOTAL BUILDING SF = 3472 SF
  - TOTAL LANDSCAPING POINTS REQUIRED = 21763 PTS
  - (4) EXISTING MEDIUM TREES @ 1000 PLS EACH = 4000 PLS
  - (1) EXISTING LARGE TREE @ 2500 PLS EACH = 2500 PLS
  - (12) EXISTING SHRUBS @ 250 PLS EACH = 3000 PLS
  - (1) EXISTING TREE @ 1000 PLS EACH = 1000 PLS
  - TOTAL LANDSCAPING POINTS ACQUIRED = 21510 PLS

ANAMOSA STREET

SILVER STREET

PROPOSED ASPHALT PAVEMENT

PROPOSED DRIVEWAY ACCESS LOCATION

PROPOSED 1'-6" TALL CONCRETE BLOCK RETAINING WALL

(1) DRIVEWAY

(1) DIRT WALK

(1) POWER POLE

(1) WALKWAY

(1) WALKWAY

(1) WALKWAY

(1) WALKWAY

(1) WALKWAY

(1) WALKWAY

(1) WALKWAY

(1) WALKWAY