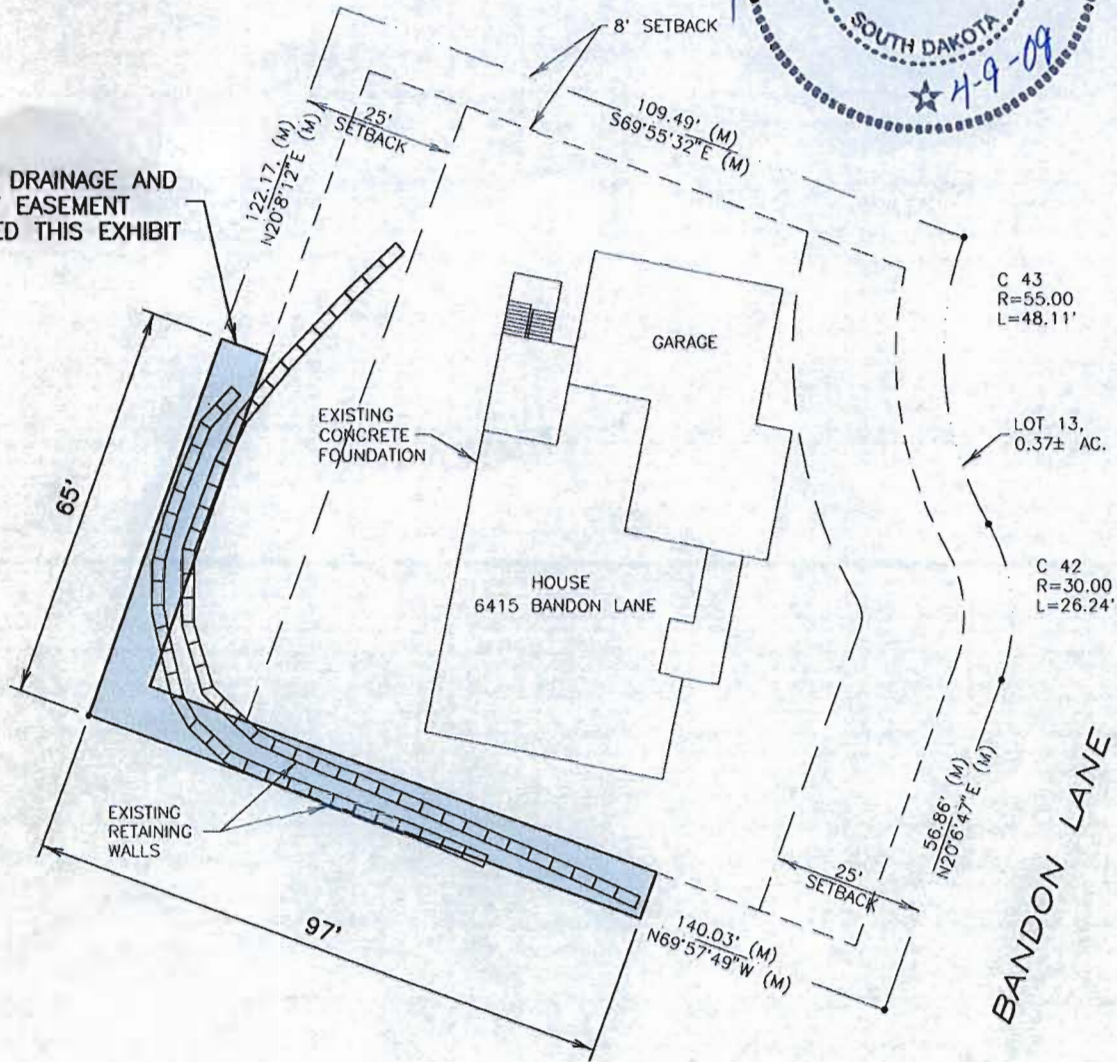


EXHIBIT "A"

LOT 13 OF BLOCK 22 OF RED ROCK ESTATES
LOCATED IN NE1/4, NE1/4 OF SECTION 29, T1N, R7E, BHM.
RAPID CITY, PENNINGTON COUNTY, SOUTH DAKOTA



MINOR DRAINAGE AND
UTILITY EASEMENT
VACATED THIS EXHIBIT



NOTE:
PLATTED DISTANCE AND
BEARINGS RECORDED IN PLAT
BOOK 33, PAGE 151 (1, 2, 3).
MEASURED DISTANCES AND
BEARINGS SHOWN HEREON.



Drawing: LOTS 9 AND 13.DWG (P00) (\\MAIN-DATA\CTECPROJECTS & PROPOSALS\09138.00 RED ROCKS LOTS 8 & 13 OF BLOCK 22 EASEMENT VACATION DRAWINGS)