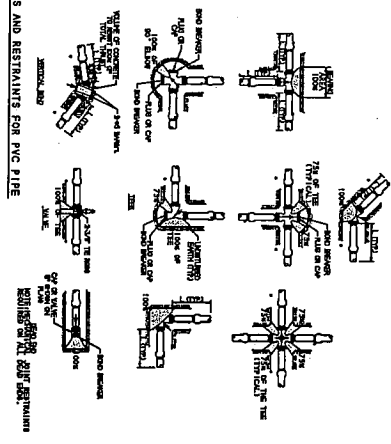


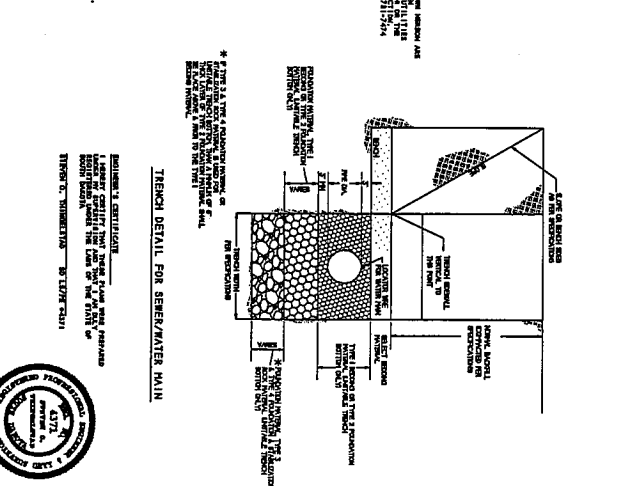
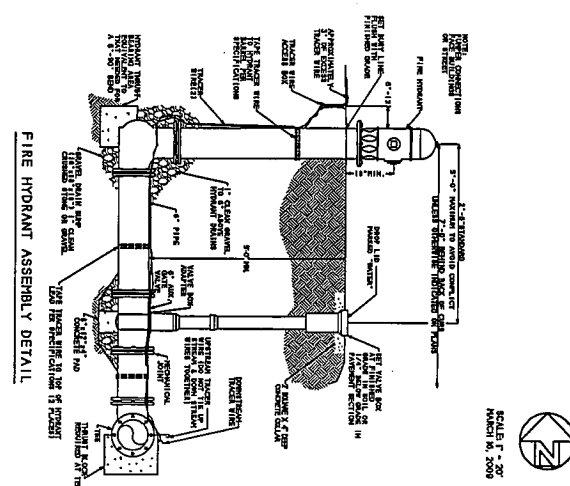
LINE BEARING DATA FOR BENCH MARKING (B.M.)

LINE NO.	BEARING	LENGTH	START POINT	END POINT
1	N 89° 15' 00\"/>			
2	S 89° 15' 00\"/>			
3	N 89° 15' 00\"/>			
4	S 89° 15' 00\"/>			
5	N 89° 15' 00\"/>			
6	S 89° 15' 00\"/>			
7	N 89° 15' 00\"/>			
8	S 89° 15' 00\"/>			
9	N 89° 15' 00\"/>			
10	S 89° 15' 00\"/>			
11	N 89° 15' 00\"/>			
12	S 89° 15' 00\"/>			
13	N 89° 15' 00\"/>			
14	S 89° 15' 00\"/>			
15	N 89° 15' 00\"/>			
16	S 89° 15' 00\"/>			
17	N 89° 15' 00\"/>			
18	S 89° 15' 00\"/>			
19	N 89° 15' 00\"/>			
20	S 89° 15' 00\"/>			



**GENERAL NOTES:**

- THE CONTRACTOR SHALL BE RESPONSIBLE FOR OBTAINING ALL NECESSARY PERMITS AND APPROVALS FROM THE CITY OF RAPID CITY.
- ALL CONSTRUCTION SHALL BE IN ACCORDANCE WITH THE CITY OF RAPID CITY SPECIFICATIONS AND STANDARDS.
- THE CONTRACTOR SHALL MAINTAIN ACCESS TO ALL ADJACENT PROPERTIES AT ALL TIMES.
- ALL UTILITIES SHALL BE PROTECTED AND DEEPER THAN THE PROPOSED TRENCH.
- THE CONTRACTOR SHALL BE RESPONSIBLE FOR THE PROTECTION OF ALL EXISTING UTILITIES.
- ALL MATERIALS AND WORKMANSHIP SHALL BE SUBJECT TO INSPECTION AND APPROVAL BY THE CITY ENGINEER.
- THE CONTRACTOR SHALL MAINTAIN A RECORD OF ALL CONSTRUCTION ACTIVITIES.
- ALL CONSTRUCTION SHALL BE COMPLETED WITHIN THE SPECIFIED TIME FRAME.
- THE CONTRACTOR SHALL BE RESPONSIBLE FOR THE REMOVAL OF ALL EXCESS MATERIAL AND DEBRIS.
- ALL CONSTRUCTION SHALL BE IN ACCORDANCE WITH THE CITY OF RAPID CITY SPECIFICATIONS AND STANDARDS.



DATE	DESCRIPTION

8" WATER MAIN PLAN & PROFILE  
 NORTH MAPLE  
 LOT 2 OF LJS SUBDIVISION  
 MEIER / GIKLING

LOT 2 LJS SUBDIVISION  
 LOCATED IN THE NW1/4 OF SECTION 30,  
 T2N, R8E, BHM, RAPID CITY  
 PENNINGTON COUNTY, SOUTH DAKOTA

BRITTON ENGINEERING & LAND SURVEYING, INC  
 8035 BLACK HAWK ROAD, SUITE 5, PO BOX 649  
 BLACK HAWK, SD 57718  
 PH. (605) 716-7988