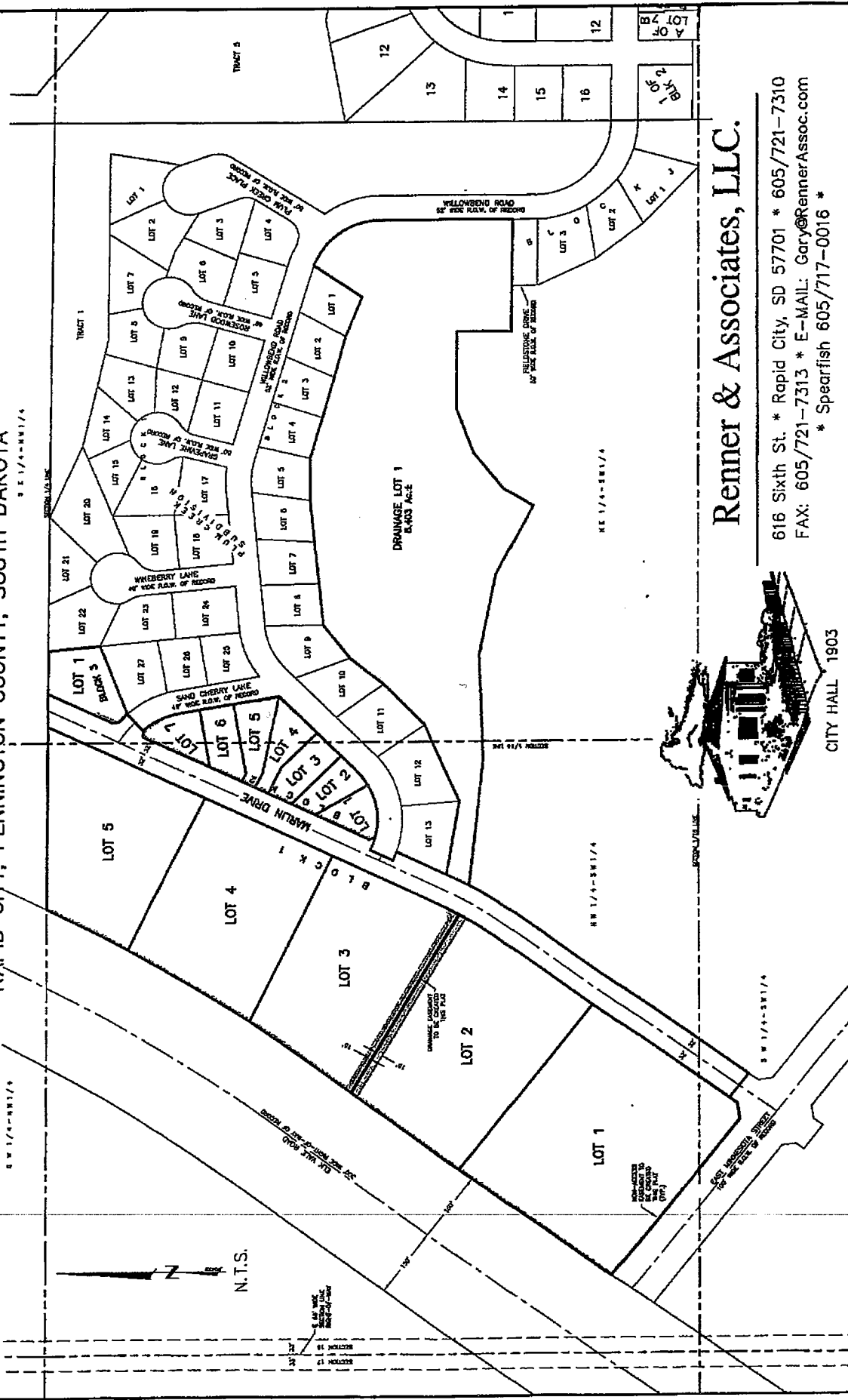


PLAT OF
**LOTS 1-5 OF BLOCK 1, LOTS 1-7 OF BLOCK 2,
 LOT 1 OF BLOCK 3, DRAINAGE LOT 1, & MARLIN DRIVE RIGHT-OF-WAY,
 ELKS CROSSING**

(formerly a portion of the N1/2 of the SW1/4
 and a portion of the SW1/4 of the SW1/4)

SECTION 16, T1N, R8E, BHM

RAPID CITY, PENNINGTON COUNTY, SOUTH DAKOTA



CITY HALL 1903

Renner & Associates, LLC.

616 Sixth St. * Rapid City, SD 57701 * 605/721-7310
 FAX: 605/721-7313 * E-MAIL: Gary@RennerAssoc.com
 * Spearfish 605/717-0016 *