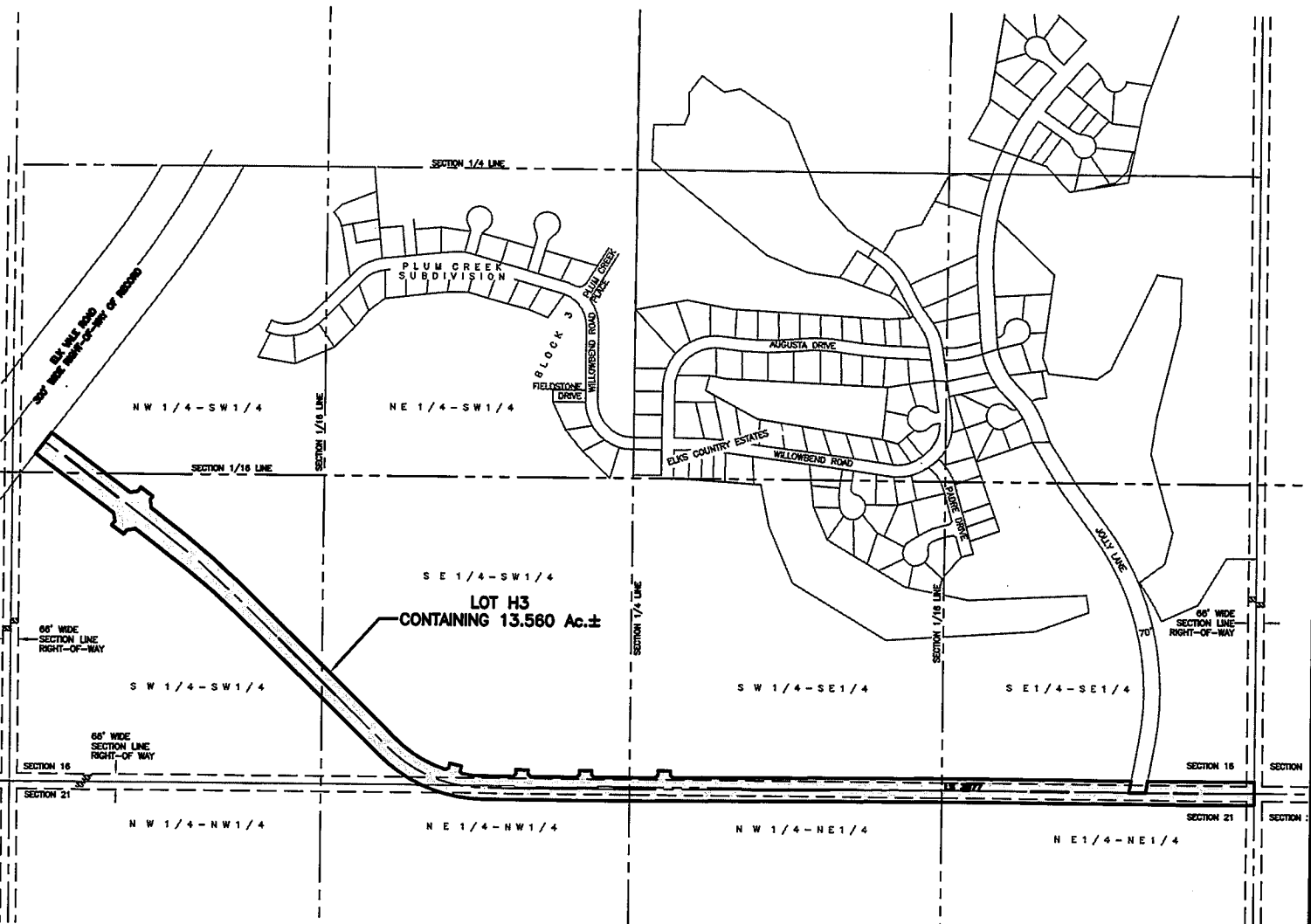


PLAT OF LOT H3

SHOWING A PARCEL OF LAND TO BE ACQUIRED FOR HIGHWAY PURPOSES
 IN THE NW1/4 OF THE SW1/4 AND IN THE S1/2 OF THE S1/2 OF SECTION 16,
 ALSO IN THE NE1/4 OF THE NW1/4 AND IN THE N1/2 OF THE NE1/4 OF SECTION 21
 ALL LOCATED IN T1N, R8E, BHM
 RAPID CITY, PENNINGTON COUNTY, SOUTH DAKOTA



RECEIVED

JAN 02 2009

Rapid City Growth
 Management Department

Renner Associates, LLC.

616 Sixth St. * Rapid City, SD 57701 * 605/721-7310
 FAX: 605/721-7313 * E-MAIL: Gary@RennerAssoc.com
 * Spearfish 605/717-0016 *



CITY HALL 1903



N.T.S.