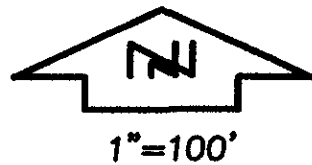


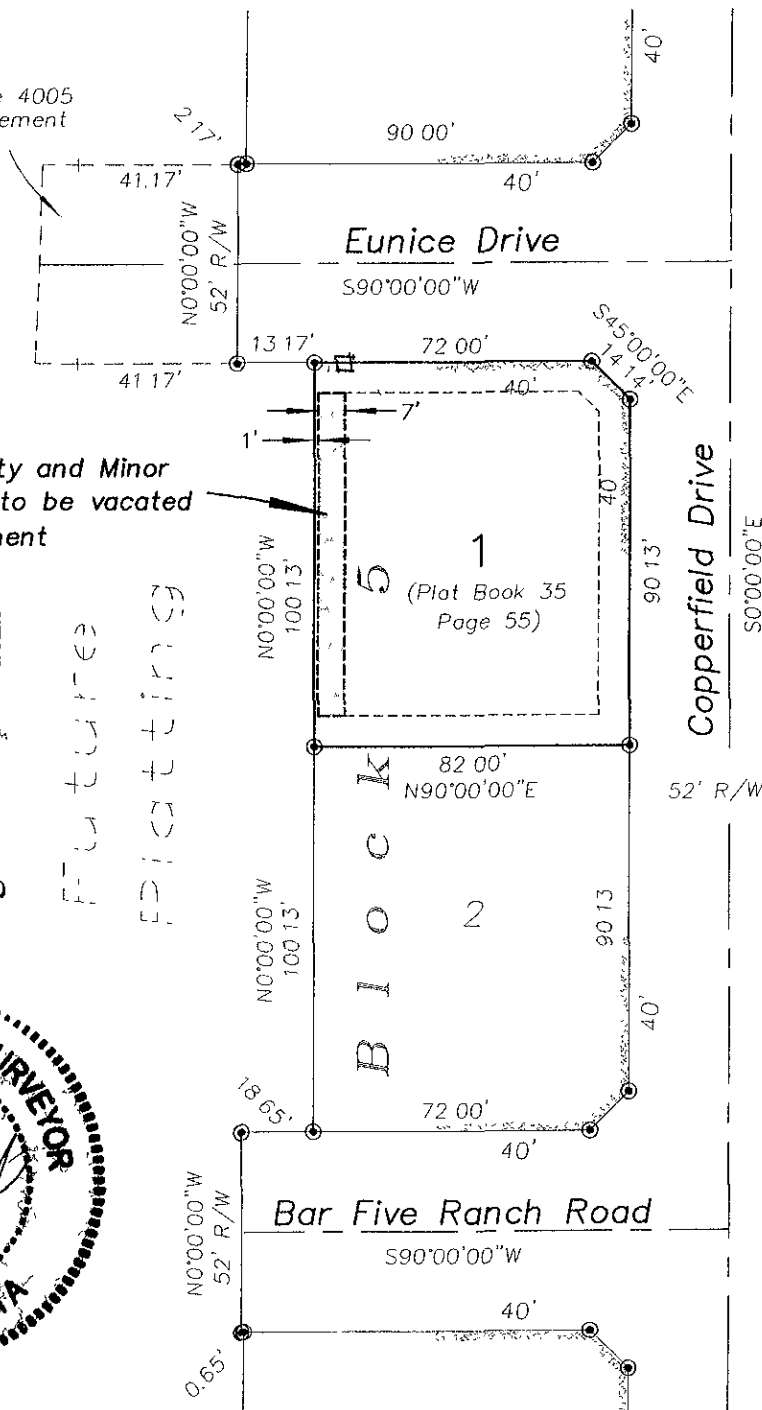
EXHIBIT A

VACATION OF EASEMENT
 LOT 1, BLOCK 5, COPPERFIELD VISTAS SUBDIVISION
 LOCATED IN SW1/4 NW 1/4 SECTION 4, T1N, R8E, BHM
 RAPID CITY, PENNINGTON COUNTY, SOUTH DAKOTA



See Misc
 Book 172 Page 4005
 For Utility Easement

7' Portion of Utility and Minor
 Drainage Easement to be vacated
 this document



7
7
8
9
10
11
12

RECEIVED

SEP 26 2008

Rapid City Growth
Management Department

FUTURE
EPLICATIONS

B L O C K

