

# Request for Authorization to Purchase Materials

(For purchases exceeding \$500 but less than the bid limit)

## STREET LIGHT POLE BREAKAWAY COUPLING REPLACEMENT

PROJECT NO. SL08-1768 / CIP NO. 50747

(Attach this cover sheet to the quotes and forward to the City Attorney)

Requestor: John Less *[Signature]* Department Director *[Signature]*

Cost Center: 0108/4250/4253

Date: 11/11/08 Vendor: Transpo Industries, Inc. Amount: \$21,300

Item Description: One hundred twenty (120) Pole-Safe Model No. 4100 breakaway couplings and one hundred twenty (120) Pole-Safe Model No. SPMKDN-5 skirts.

### City Attorney's Office

Reviewed by: \_\_\_\_\_ Date: \_\_\_\_\_ Quotes  Yes  No  
\_\_\_\_\_ Approved Rejected \_\_\_\_\_

Changes necessary for approval: \_\_\_\_\_  
\_\_\_\_\_  
\_\_\_\_\_  
\_\_\_\_\_  
\_\_\_\_\_  
\_\_\_\_\_

**Less John**

**From:** Brown, Richard [RBrown@transpo.com]  
**Sent:** Tuesday, November 04, 2008 11:46 AM  
**To:** Less John  
**Subject:** Pole-Safe Model SPM 4100 Quotation

To: John Less  
Traffic Engineer  
City of Rapid City  
Department of Public works  
300 Sixth Street  
Rapid City, SD

Re: Pole-Safe Light Pole Breakaway Support System Quotation

Confirming your request, we are quoting on 120 sets of SPM 4100, 1" couplings with skirts.

- 1. 120 sets of SPM 4100 @ \$147.00\* per set (of four couplings) ..... \$17,640.00
- 2. 120 sets of skirts Model SPMKDN-5 (4 pcs) with SS screws @ \$18.00\* ea... \$ 2,160.00

Total Material: \$ 19,800.00

- 3. Add: Estimated Freight Charges based upon two pallets of Material..... \$ 1500.00

Note: This is a stock item for Transpo and should ship the same week we receive your order.

Any questions, please call.

Note: We are quoting off our current published Pole-Safe Price List dated 4-01-08. \* Prices are based upon a minimum of

100 sets. For orders less than 100 sets will be re-quoted at a higher unit price.

<<Pole-Safe 4100 Details.pdf>>      <<Pole-Safe Skirt Details.pdf>>

Richard P. Brown  
Senior Vice President Sales  
Transpo Industries, Inc.  
914-636-1000, ext 635  
rbrown@transpo.com

19,800  
1,500  
\$21,300

**Crescent  
Electric  
Supply Co.**

# Quotations

Page 1 of 1

317 Maple Avenue  
Rapid City, SD 57701  
Phone: 605 342-7913  
Fax: 605 342-7278

Date:11/4/2008  
CITY OF RAPID CITY  
Job Name:DEPT.304

We thank you for your inquiry & are pleased to submit the following quotation:

Item	Quantity	Description	Unit Price	Extension
	120	STM-4100 TRANSPO POLE-SAFE COUPLERS	\$179.19	\$21,502.80
		FREIGHT QUOTATION*	\$845.75	\$845.75
				\$22,348.55
<p>*THIS FREIGHT QUOTE WILL BE SUBJECT TO THE FLUX OF FUEL/TRANSPORTATION COSTS. PRICING ON THE ANCHOR BOLTS WILL BE FIRM FOR 30 DAYS. AT THE TIME OF QUOTE, SUFFICIENT STOCK WAS AVAILABLE FROM THE FACTORY TO FILL THIS QUOTED QUANTITY.</p> <p>Thank you for the inquiry Jerry! Best regards, JC Calhoun</p>				

Quoted by:JC Calhoun

1. This quotation is for the above types & totals & quantities are for your convenience only.  
Take offs are not guaranteed. Freight will be added for pre-shipment of anchor bolts.
2. Prices do not include sales tax or freight charges and if applicable, these charges will be in addition to prices quoted.
3. This quotation does not include accessory equipment unless such items are listed.
4. This quote expires after 30 days unless otherwise stated above.



**BORDER STATES**

Supply Chain Solutions™

Border States Electric Supply  
Harris Electric Supply - Minnesota Electric Supply

Border States Electric - RPC  
774 Industrial Avenue  
Rapid City SD 57702-0328  
Phone: 605-348-5104

**Quote**

Page: 1 of 1

BSE Quote: 21677986  
Sold-to Acct #: 5788  
Valid From: 11/04/2008 To: 11/11/2008  
PO No: JERRY

Created By: Joshua Hammerschmidt  
Tel No: (605) 348-5104  
Fax No: (605) 348-9385

Rapid City City of  
Attn: Accounts Payable  
City Finance Office  
300 6th St  
Rapid City SD 57701

Inco Terms:  
FOB ORIGIN

Payment Terms:  
Net 25th prox

Taxes are not included

Attn: Jerry 5-Pages

Cust Item	BSE Item	Material MFG - Description	Quantity	Price	Per UoM	Value
	000010	- TRANSPO ANCHOR BOLT & SKIRT PACKAGE	1 EA	24,205.00 / 1	EA	24,205.00
CONSISTING OF: QTY. 120) SPM-4111 -SETS OF ANCHOR BOLTS QTY. 120) SPMKDN-5 -SETS OF SKIRTS W/SS SCREWS **FREIGHT PREPAID FROM FACTORY** NOTE: THIS IS A STOCK ITEM FOR TRANSPO INDUSTRIES AND SHOULD SHIP THE SAME WEEK THAT THEY RECEIVE THE ORDER. PRICES ARE BASED UPON A MINIMUM ORDER OF 100 SETS. ORDER QUANTITIES LESS THAN 100 SETS WILL BE RE-QUOTED AT A HIGHER UNIT PRICE.						

**Total Value** 24,205.00

To access BSE's Terms and Conditions of Sale, please go to  
<https://www.borderstateselectric.com>

**FAXED**

NOV - 4 2008

**BSE RAPID CITY, SD**

# SPECIFICATIONS

Performance Criteria:

1. Double-Neck™ Pole-Safe® conforms to AASHTO "Standard Specifications for Structural Supports for Highway Signs, Luminaires and Traffic Signals."
2. Double-Neck™ Pole-Safe® has been crash-tested and FHWA approved in accordance with the requirements of NCHRP Report 350, "Recommended Procedures for the Safety Performance Evaluation of Highway Features."
3. Maximum Allowable Pole Mass = 450 kg (992 lb.) (total, including fixtures).

Physical Properties per Coupling:

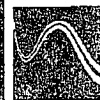
1. Ultimate Tensile Strength = 221.5 kN (49.8 kips), minimum.
2. Tensile Yield Strength = 192.0 kN (43.2 kips), minimum.
3. Ultimate Restrained Shear Strength = 24.5 kN (5.5 kips), minimum.

Corrosion Protection:

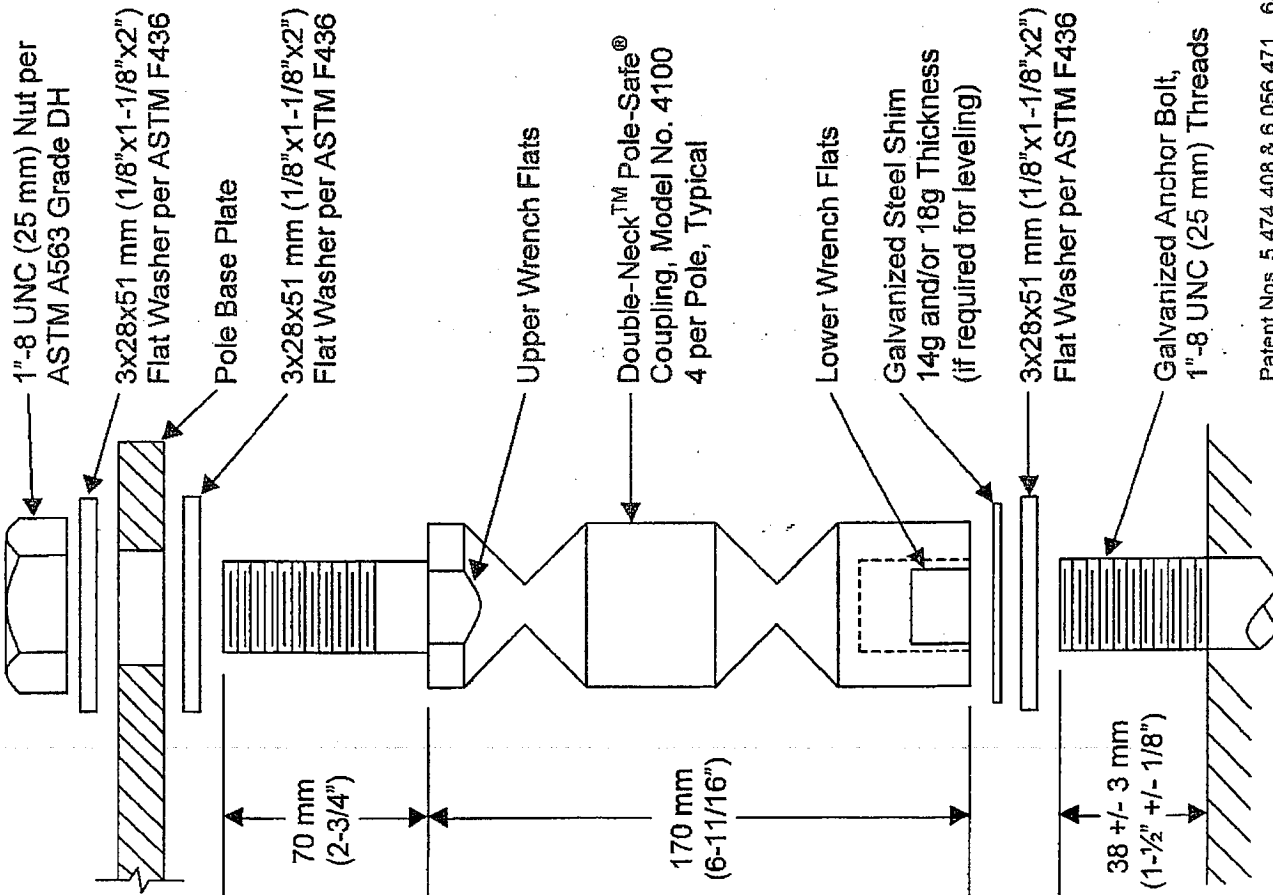
1. All Double-Neck™ Pole-Safe® couplings, nuts, bolts, washers, and shims are galvanized after fabrication in accordance with ASTM A153.

## Pole-Safe® Model No. 4100

Breakaway Support System for Light Poles



The Smart Solutions Company  
 20 Jones Street  
 New Rochelle, NY 10801  
 914-636-1000



Patent Nos. 5,474,408 & 6,056,471 6/00



**Pole-Safe® Model No. 4100**  
Breakaway Support System for Light Poles

**INSTALLATION INSTRUCTIONS**

**NOTE:** Proper Installation is essential for the Pole-Safe Breakaway Support System to function correctly as designed.

1. Surface of foundation around anchor bolts must be smooth, flat and free of debris.
2. Existing anchor bolts MUST be sized to the proper projection height as shown on the reverse side of these instructions. Then, anchor bolts shall be cleaned, and if necessary, coated with cold galvanizing material prior to installing Pole-Safe couplings.
3. Install lower flat washers, and thread Pole-Safe couplings on to anchor bolts.
4. If needed, shims are provided for leveling of the pole base plate, and may be installed on the top and/or bottom of the couplings. No more than 2 shims shall be installed on any one coupling. For larger adjustments that may be required, install no more than one additional flat washer per Pole-Safe coupling.
5. Use lower wrench flats to tighten Pole-Safe couplings on to the anchor bolts. Secure couplings as tight as possible using conventional wrenches. Do not use a pipe wrench. Couplings must be seated squarely on the washers, and washers must be seated uniformly on top of the foundation. If necessary, remove coupling and reduce the anchor bolt projection height to allow proper seating of the couplings.
6. Install a flat washer on top of each Pole-Safe coupling, and set the pole with base plate on top of the couplings.
7. Install a flat washer and nut on to each Pole-Safe coupling extended through the pole base plate. If pole is not plumb, install shims and/or washers for proper leveling as described in Step 4 above.
8. Tighten each nut on to pole base plate. Pole-Safe couplings must be held with an additional wrench on the upper wrench flats to prevent an induced torque stress across the necked portion of the couplings. Nuts shall be tightened using the turn-of-nut method in accordance with American Institute of Steel Construction (AISC) procedures (for ASTM A325 and A490 anchor bolts, 1/3 rotation past "snug tight").

Transpo Industries, Inc., 20 Jones Street, New Rochelle, NY 10801-6098  
Phone: 914-636-1000 Fax: 914-636-1282  
[www.transpo.com](http://www.transpo.com)



**Pole-Safe®**  
Breakaway Support System for Light Poles

**SKIRT INFORMATION**

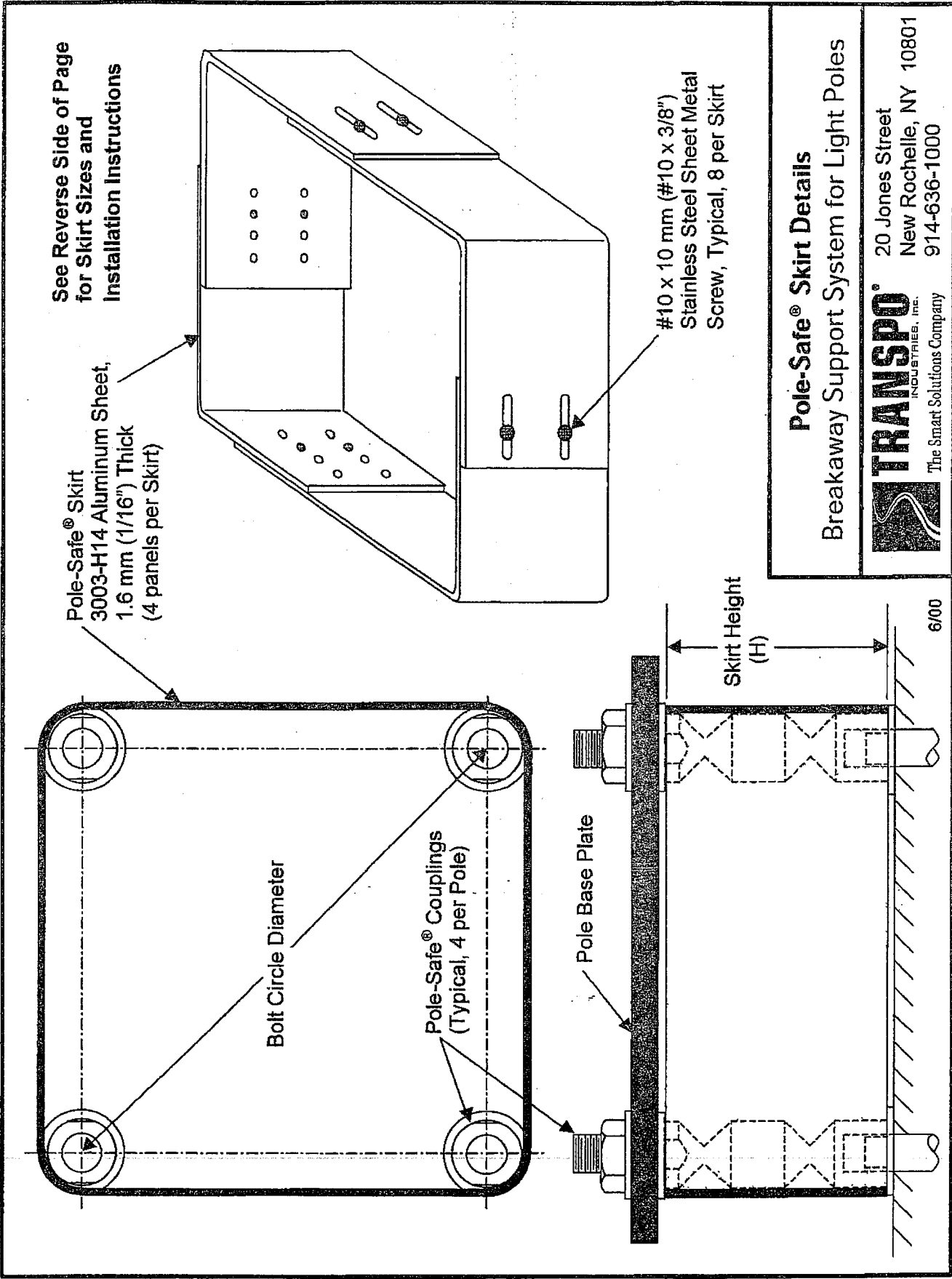
**Selection Table:**

Pole-Safe® Model No.	Bolt Circle Diameter		Skirt Height (H) mm (in.)
	254 mm to 380 mm (10" to 15") Skirt Part No.	380 mm to 500 mm (15" to 20") Skirt Part No.	
4062	SPMKDN-4	SPMKDN-4L	146 (5-3/4)
4075	SPMKDN-4	SPMKDN-4L	146 (5-3/4)
4100	SPMKDN-5	SPMKDN-5L	168 (6-5/8)
4125	SPMKDN-5	SPMKDN-5L	168 (6-5/8)
5062	SPMKDN-1	SPMKDN-1L	108 (4-1/4)
5075	SPMKDN-1	SPMKDN-1L	108 (4-1/4)
5100	SPMKDN-2	SPMKDN-2L	127 (5)
5125	SPMKDN-3	SPMKDN-3L	133 (5-1/4)

**Installation Instructions:**

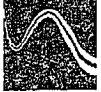
1. Place 4 skirt panels around Pole-Safe Couplings using overlap configuration shown on reverse side of page. All 4 sides of the skirt box should have 2 slots facing outside.
2. Thread 8 sheet metal screws through the outside slots into the closest corresponding holes in the adjacent inside panel.
3. Position panels snug against the Pole-Safe Couplings.
4. Tighten all 8 sheet metal screws.

Transpo Industries, Inc., 20 Jones Street, New Rochelle, NY 10801-6098  
Phone: 914-636-1000 Fax: 914-636-1282  
[www.transpo.com](http://www.transpo.com)



**Pole-Safe® Skirt Details**

Breakaway Support System for Light Poles



**TRANSPPO®**  
INDUSTRIES, INC.  
The Smart Solutions Company

20 Jones Street  
New Rochelle, NY 10801  
914-636-1000