

La Croix 08VE018

1128 Alma St.

Rapid City, SD 57701

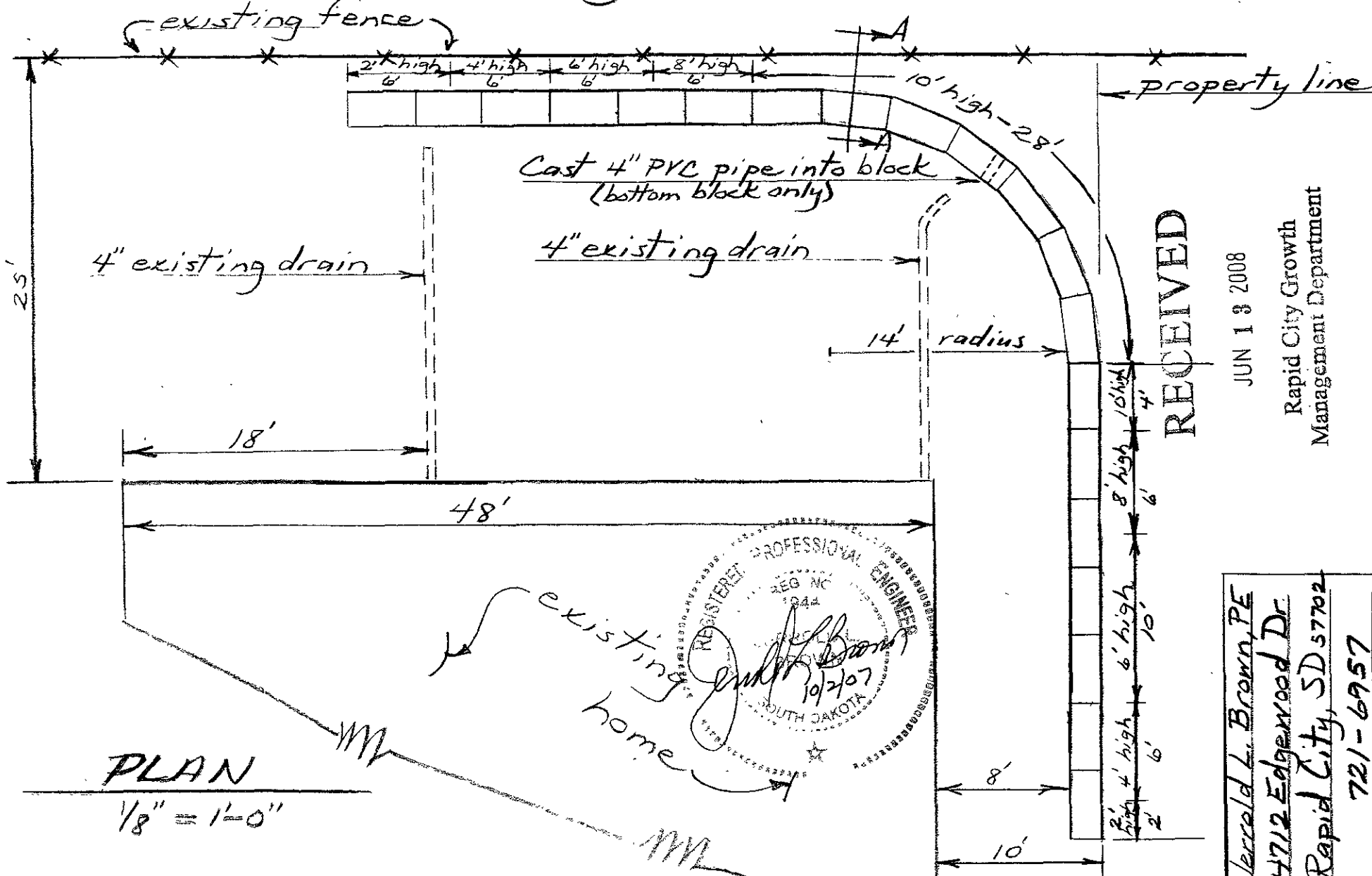
± 76' Segmental Retaining Wall

October 1, 2007

1/2

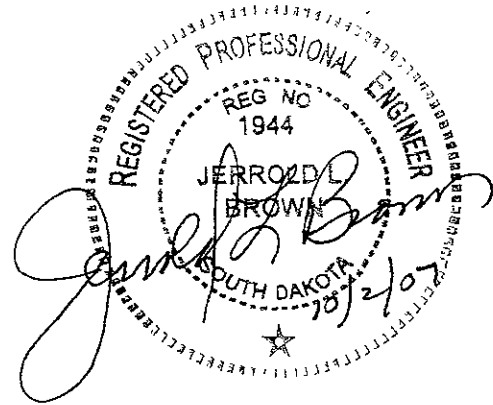
Note:

Section AA See Sheet 2/2



Terrell L. Brown, PE
 4712 Edgewood Dr
 Rapid City, SD 57702
 721-6957

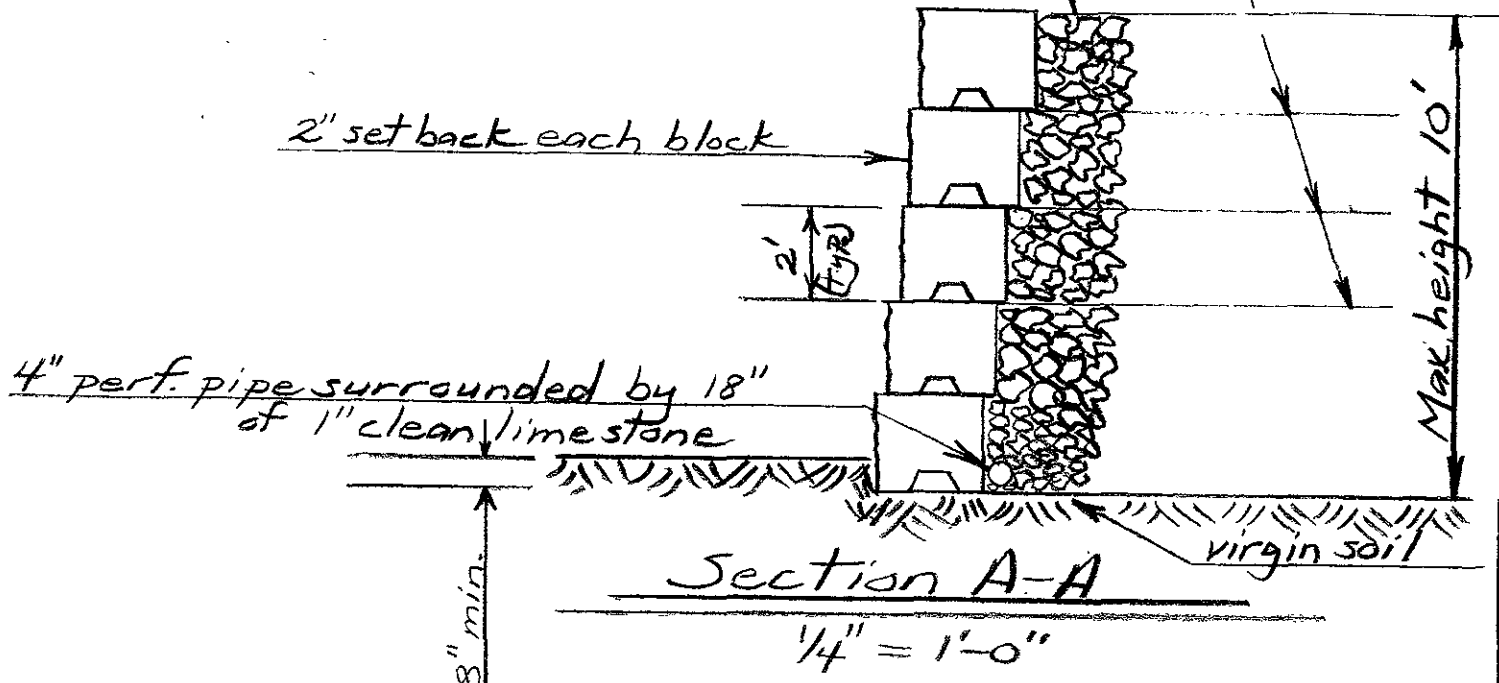
Builder:
Shamrock Enterprises
Rapid City, S.D.



Versa Grid 3.0 or equal at
4' 6" x 8' x 8' in length
Backfill Wall w/18" of 3"
limestone reject

2" setback each block

4" perf. pipe surrounded by 18"
of 1" clean limestone



Section A-A

1/4" = 1'-0"

RECEIVED

JUN 13 2008

Rapid City Growth
Management Department

Jerrold L. Brown, PE
4712 Edgewood Dr.
Rapid City, SD 57202
721-6957