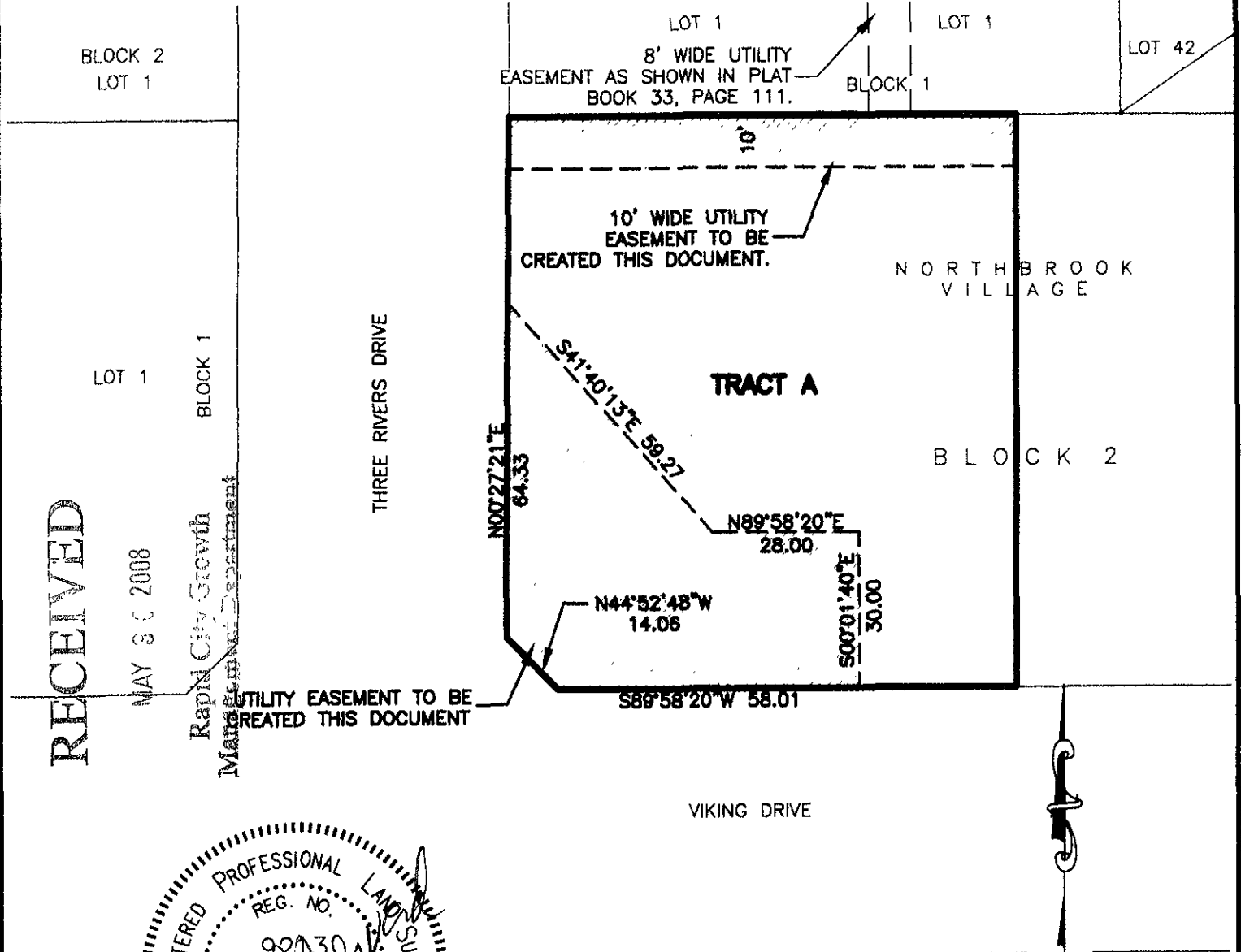


# MUNICIPAL SANITARY SEWER EASEMENT AND 10' WIDE UTILITY EASEMENT TRACT A, BLOCK 2 NORTHBROOK VILLAGE

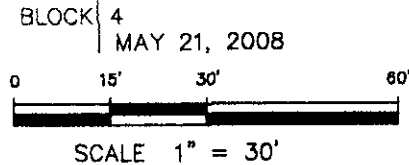
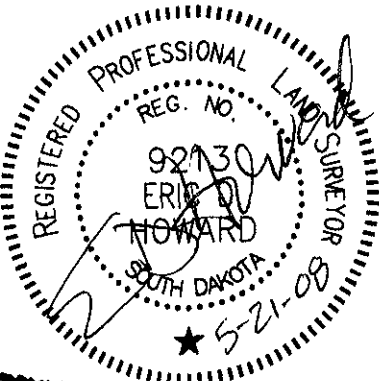
LOCATED IN THE SE1/4 OF THE SE1/4 SECTION 13, T2N, R7E, BHM, RAPID CITY, PENNINGTON COUNTY, SOUTH DAKOTA



RECEIVED

MAY 30 2008

Rapid City Growth Management Department



## Renner & Associates, LLC.

616 Sixth St. \* Rapid City, SD 57701 \* 605/721-7310  
 FAX: 605/721-7313 \* E-MAIL: Gary@RennerAssoc.com  
 Spearfish Office: 605/717-0016

PREPARED FOR:  
 DREAM DESIGN INTERNATIONAL, INC  
 628 KANSAS CITY STREET, STE. 4  
 RAPID CITY, SD 57701  
 (605) 348-0538

