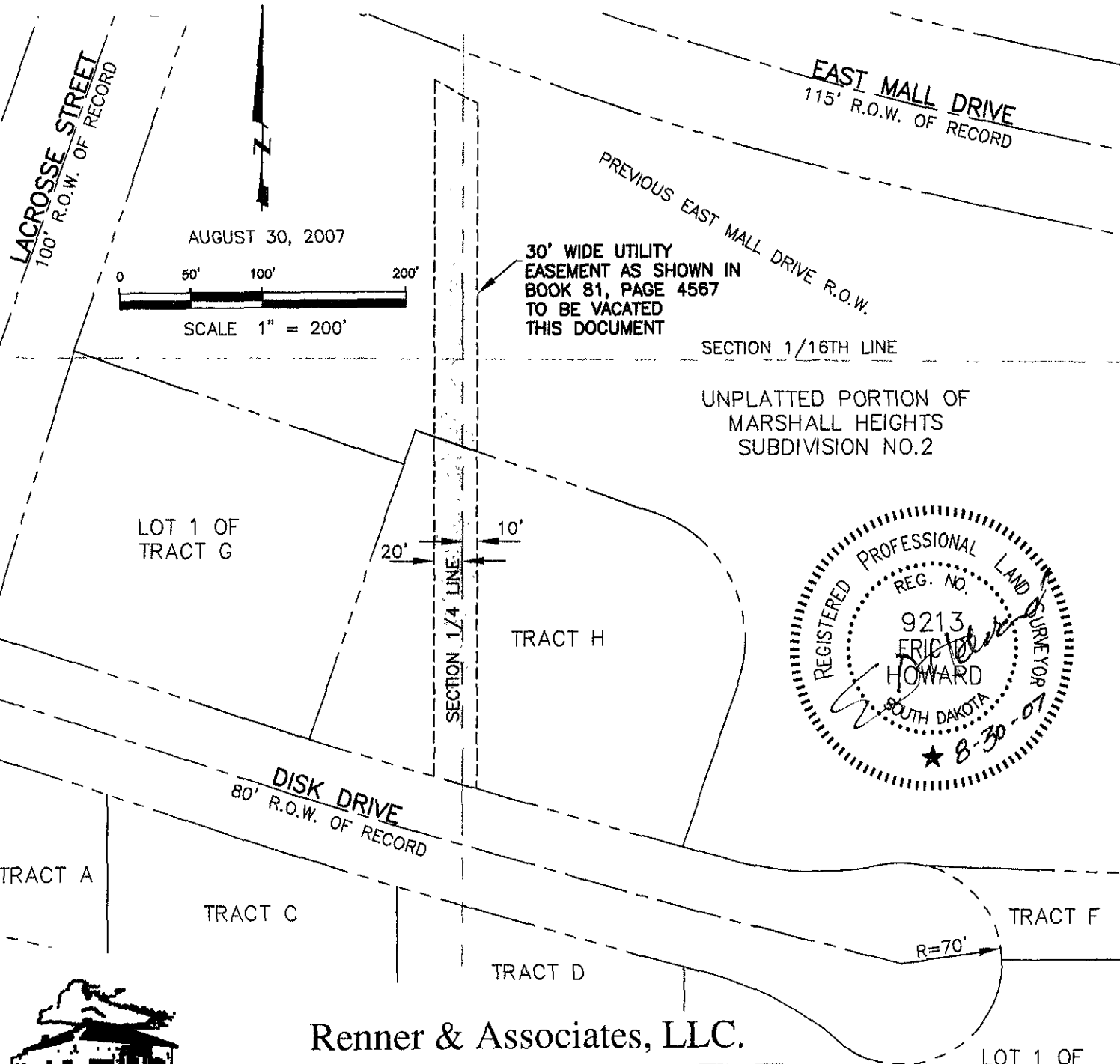


# VACATION OF 30' WIDE UTILITY EASEMENT

LOCATED IN THE W1/2 OF THE NE1/4,  
AND THE E1/2 OF THE NW1/4  
SECTION 30, T2N, R8E, BHM  
RAPID CITY, PENNINGTON COUNTY, SOUTH DAKOTA



## Renner & Associates, LLC.

616 Sixth St. \* Rapid City, SD 57701 \* 605/721-7310  
FAX: 605/721-7313 \* E-MAIL: Gary@RennerAssoc.com  
\* Spearfish 605/717-0016 \*

