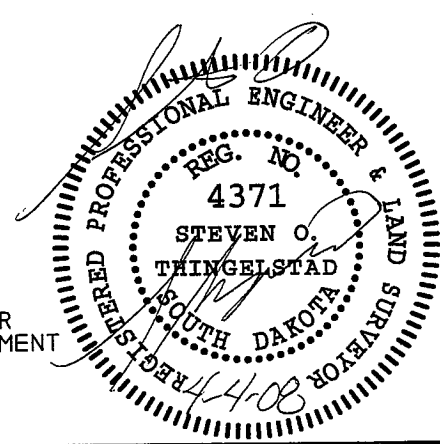
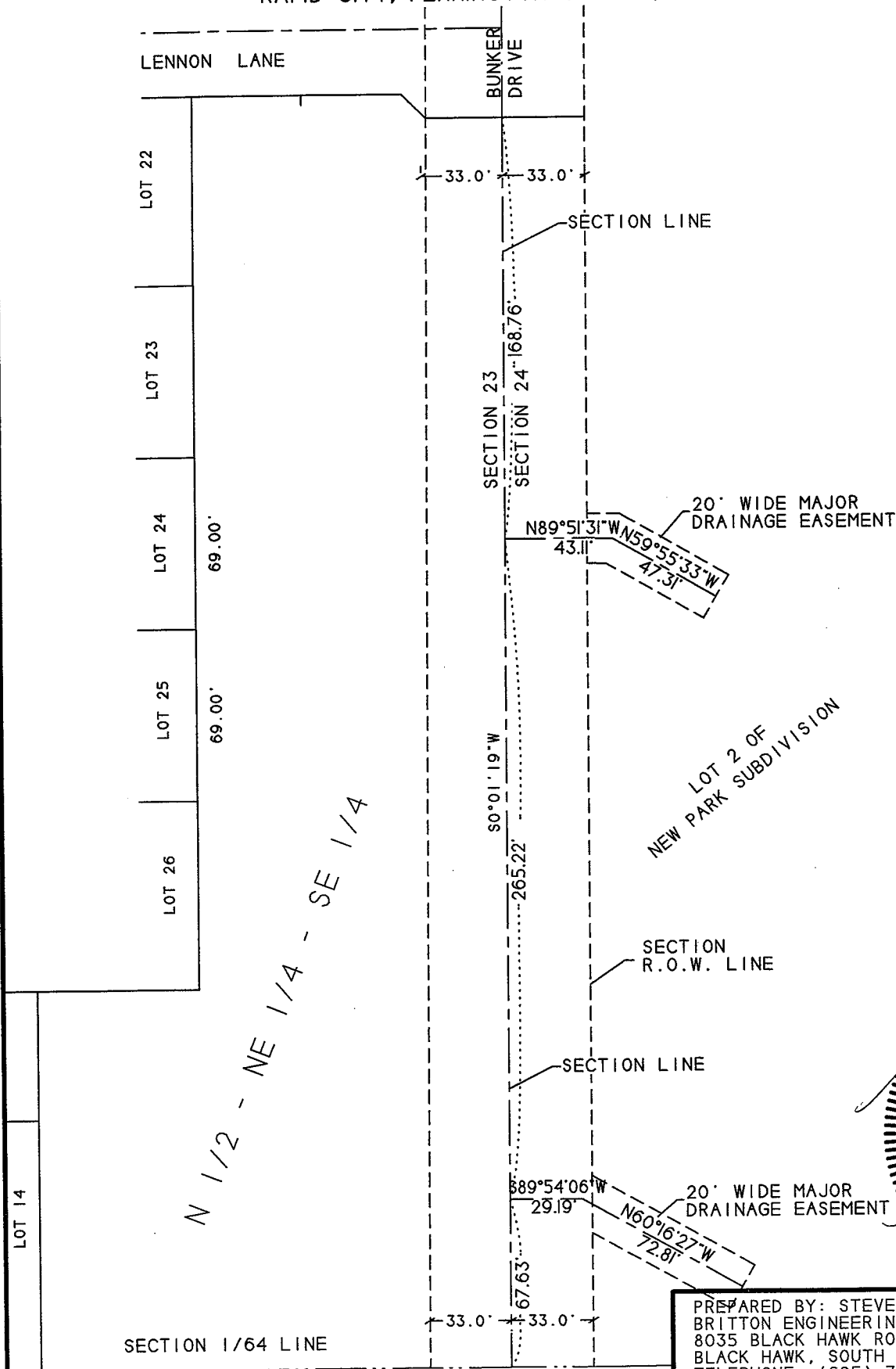


EXHIBIT "A"
 OF
 DRAINAGE EASEMENTS
 LOT 2 OF NEW PARK SUBDIVISION
 LOCATED IN THE NW 1/4 OF
 SECTION 24, T2N, R7E, BHM,
 RAPID CITY, PENNINGTON COUNTY, SOUTH DAKOTA.



SCALE: 1" = 60'
 APRIL 4, 2008



PREPARED BY: STEVEN O. THINGELSTAD
 BRITTON ENGINEERING & LAND SURVEYING, INC.
 8035 BLACK HAWK ROAD, SUITE 5
 BLACK HAWK, SOUTH DAKOTA 57718
 TELEPHONE: (605) 716-7988