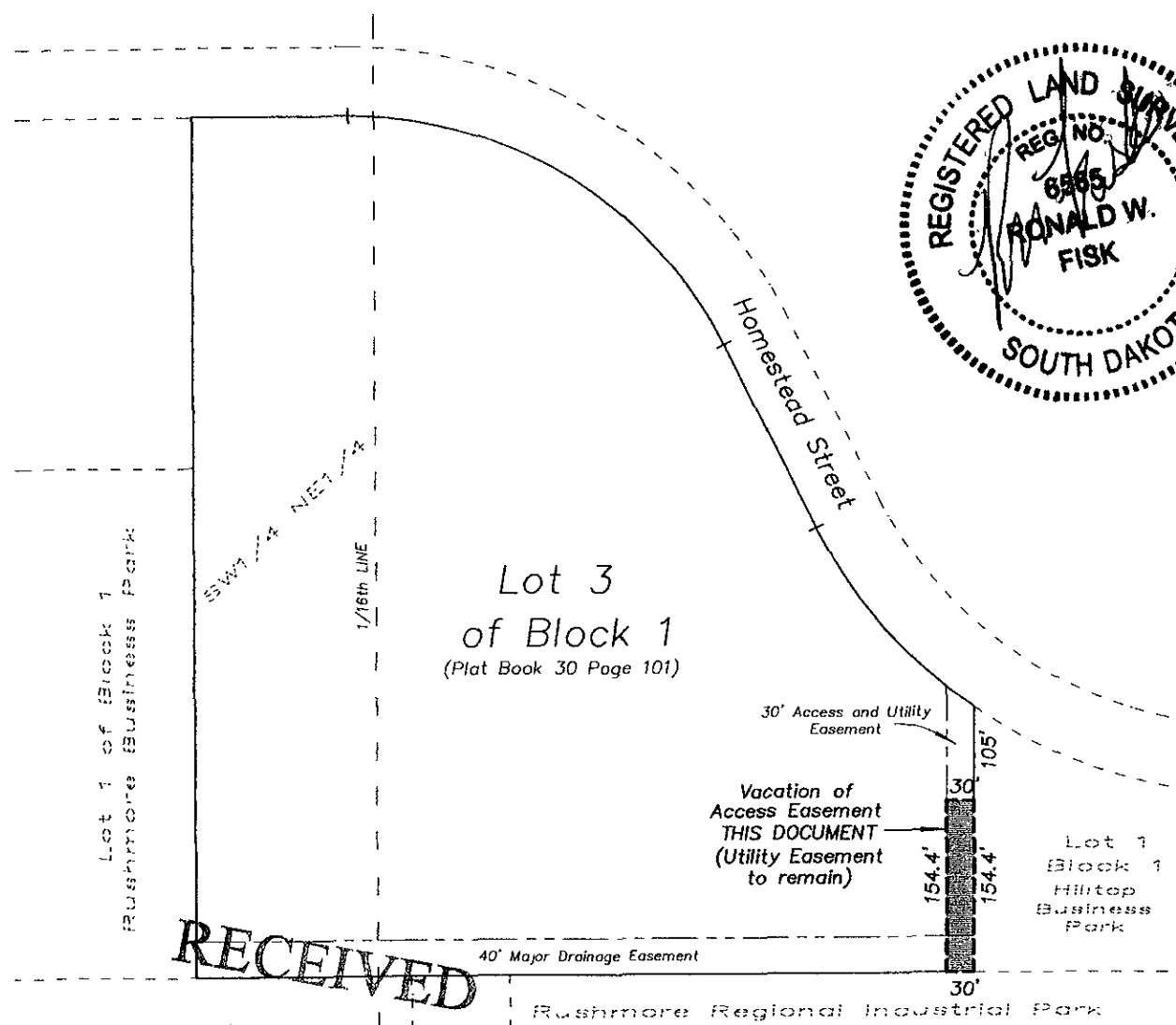
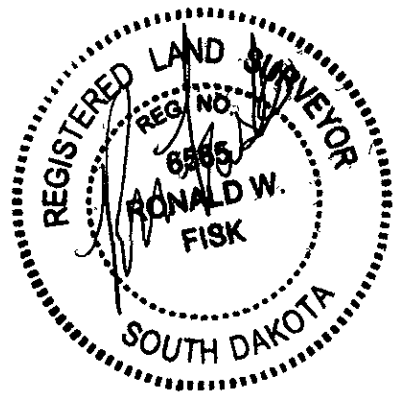


**VACATION OF A PORTION OF ACCESS EASEMENT  
LOT 3, BLOCK 1, RUSHMORE BUSINESS PARK  
LOCATED IN THE S1/2 OF THE NE1/4 OF SECTION 4, T1N, R8E , BHM,  
RAPID CITY, PENNINGTON COUNTY, SOUTH DAKOTA**



1"=200'



**RECEIVED**

FEB 25 2008

Rapid City Growth Management Department