

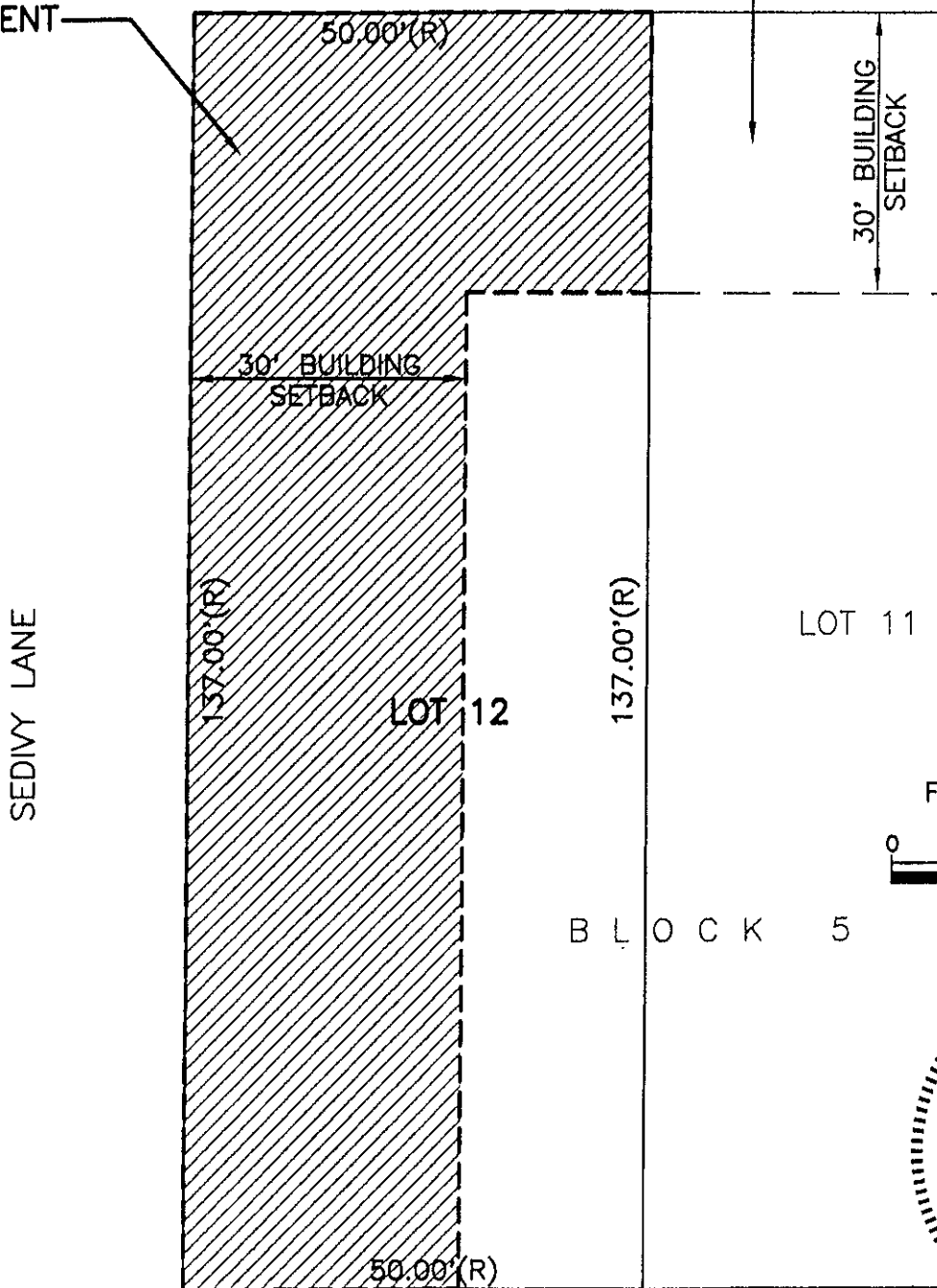
VACATION OF 30' WIDE BUILDING SETBACK LOT 12 OF BLOCK 5 OF RAPID VALLEY SUBDIVISION

LOCATED IN THE NE¹/₄ OF THE NE¹/₄,
SECTION 8, T1N, R8E, BHM,
RAPID CITY, PENNINGTON COUNTY, SOUTH DAKOTA

EAST ST. FRANCIS STREET
40' WIDE R.O.W. OF RECORD

30' WIDE BUILDING SETBACK
TO BE VACATED THIS
DOCUMENT

30' WIDE BUILDING SETBACK
AS SHOWN IN PLAT BOOK
4 PAGE 155



FEBRUARY 15, 2008



SCALE: 1" = 20'

B L O C K 5

