

BASIS OF BEARINGS
N89°56'00"E 4677.67

FOUND LARGE ALUMINUM CAP

SURVEY PLAT OF: BAR P-S SUBDIVISION INCLUDING:

LOT B1 AND LOT B2

SE 1/4

Formerly Lot B of Bar P-S Subdivision.

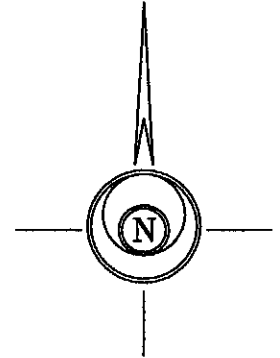
ALL LOCATED IN: SW 1/4 SECTION 20 AND THE N 1/2 OF THE NW 1/4
OF SECTION 29 ALL IN T1N, R9E, BHM

PENNINGTON COUNTY, SOUTH DAKOTA

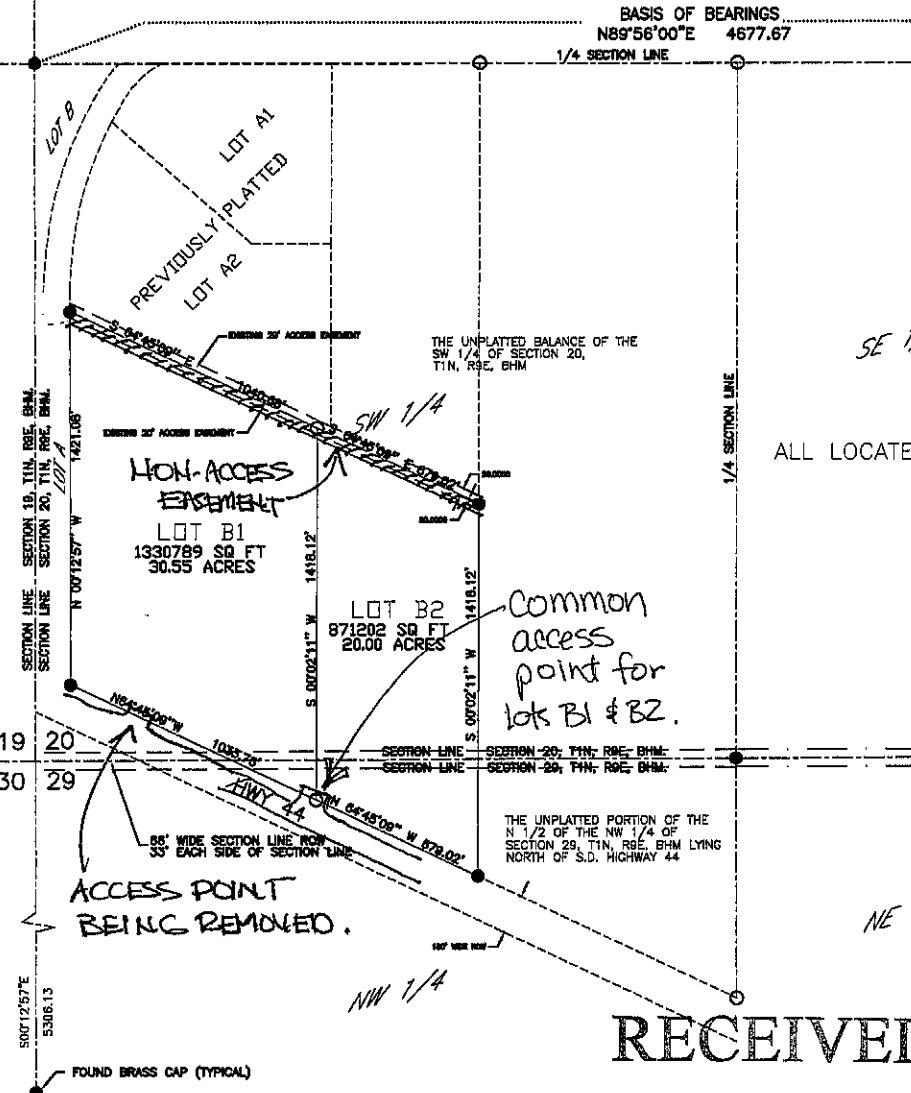
LEGEND:

- - Found survey monument as noted
- - Set 5/8 rebar with survey cap marked "Davis 3095"
- - Set 5/8 rebar with no cap
- (R) - Recorded in previous survey
- (M) - Measured this survey

BASIS OF BEARINGS: As shown hereon



SCALE 1" = 200'
DECEMBER 18, 2007



RECEIVED

FEB 20 2008

Rapid City Growth
Management Department

DRAINAGE NOTES:

All major drainage easements shown hereon shall be kept free of all obstructions including,

BUILDING RESTRICTIONS:
Per Zoning Requirements

UTILITY & MINOR DRAINAGE EASEMENT:
8' wide on the interior side of all Lot lines.

CERTIFICATE OF TREASURER: