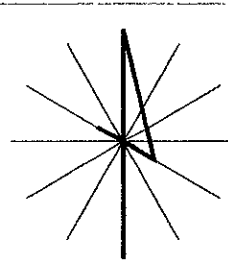


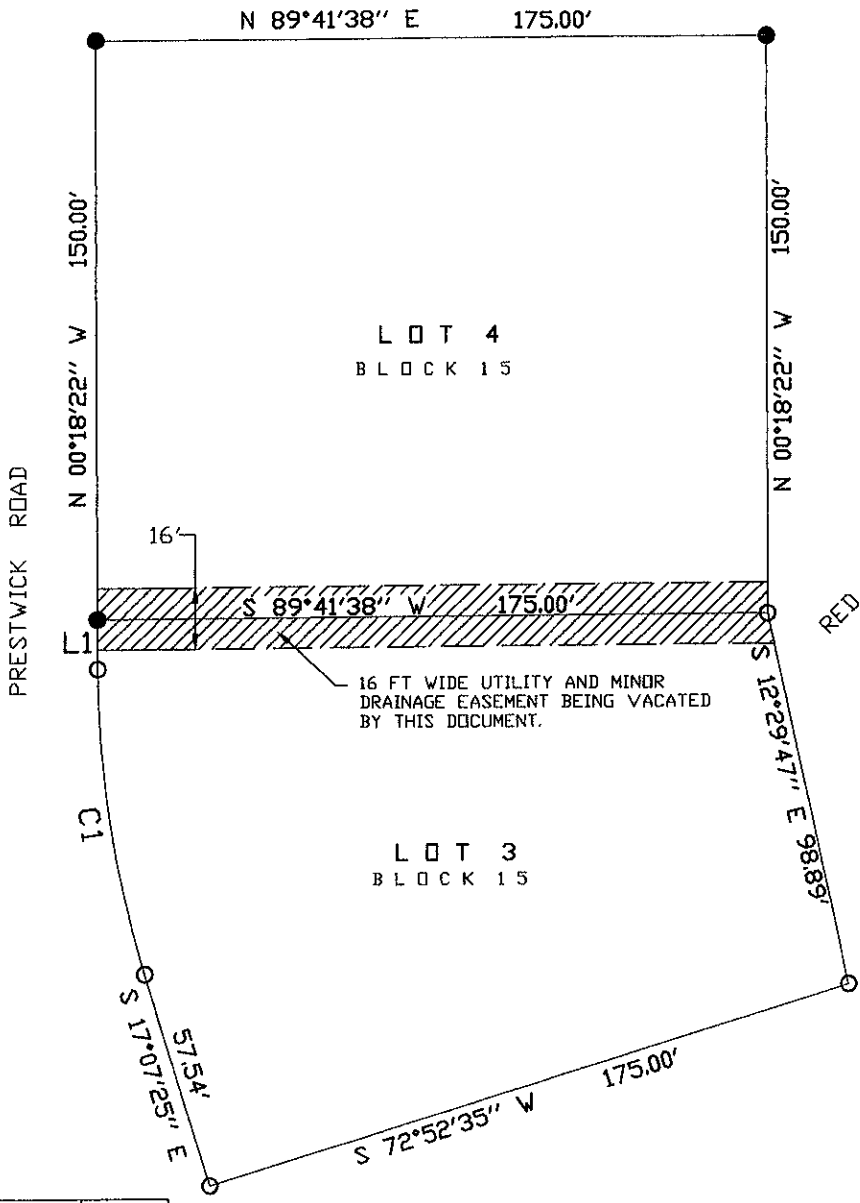
EXHIBIT A -- EASEMENT VACATION EXHIBIT

LEGAL DESCRIPTION: LOT 3 AND LOT 4 OF BLOCK 15 OF RED ROCK ESTATES SUBDIVISION  
NW1/4 NE1/4 OF SECTION 29, T1N, R7E, BHM., RAPID CITY  
PENNINGTON COUNTY, SOUTH DAKOTA.

NOTE ON PLAT SAYS THAT THERE IS A 8 FT UTILITY AND MINOR DRAINAGE EASEMENT ON THE INTERIOR SIDES OF ALL LOT LINES AND ON THE EXTERIOR OF ALL RIGHT OF WAYS.



DATE: 09-07-07  
SCALE: 1"=50'

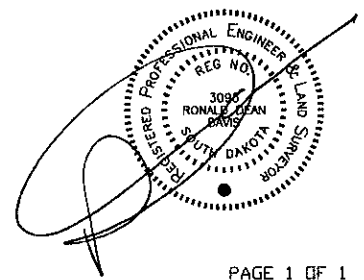


NUMBER	DIRECTION	DISTANCE
L1	N 00°18'22" W	12.94'

NUMBER	DELTA ANGLE	CHORD DIRECTION	TANGENT	RADIUS	ARC LENGTH	CHORD LENGTH
C1	16°49'01"	S 08°42'53" E	40.50	274.00	80.42	80.13

RED ROCKS GOLF COURSE

EXHIBIT A



I, Ronald D. Davis, Registered Land Surveyor No. 3095 of the State of South Dakota, do hereby certify that a field survey was done by me or under my direct supervision on September 9, 2007. This Exhibit was prepared by me and shows the utility and minor drainage easement to be vacated along and on each side of the common lot line between Lots 3 and 4 of Red Rock Estates Subdivision.