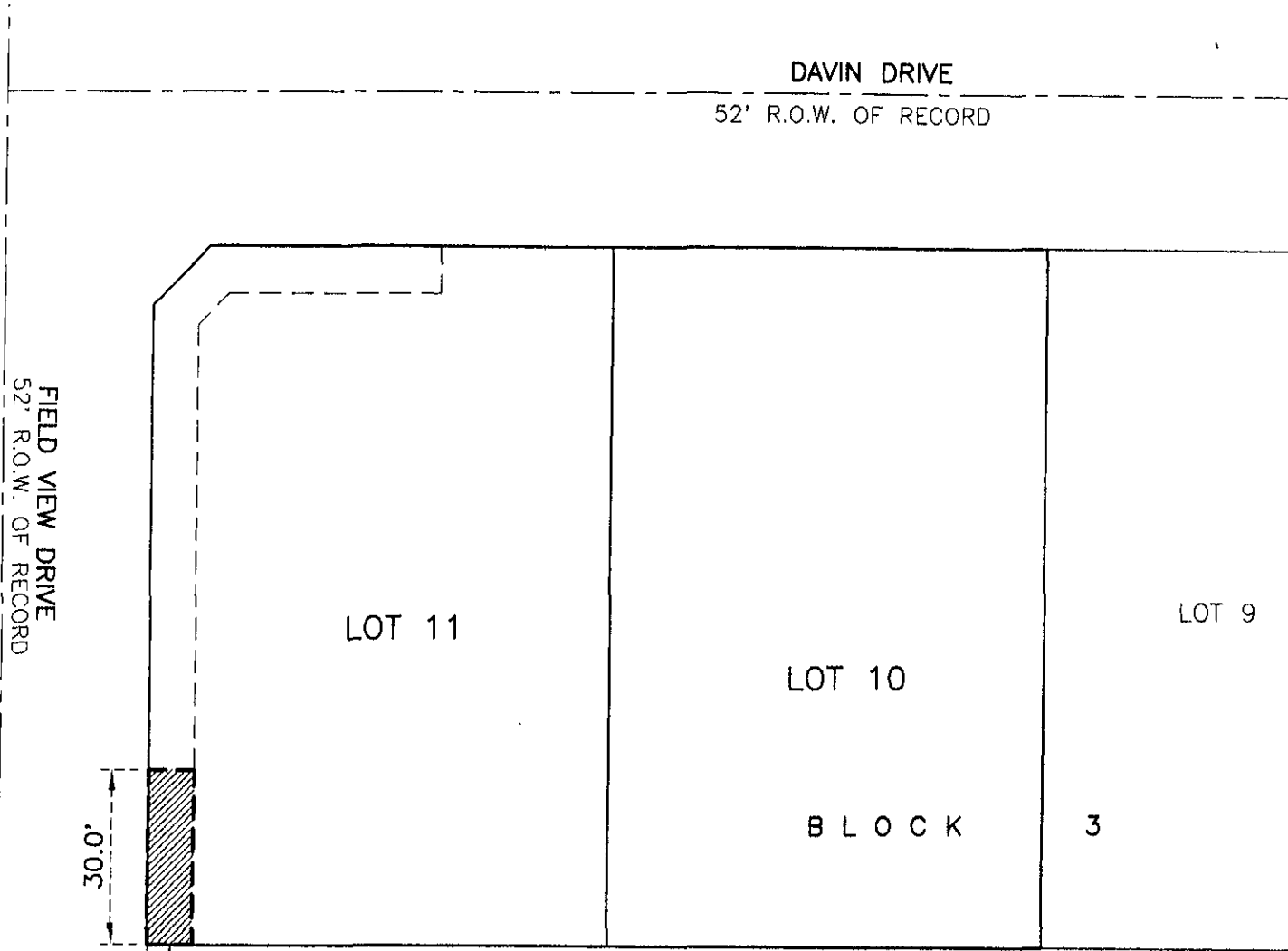


VACATION OF A PORTION OF NON-ACCESS EASEMENT

LOT 11 OF BLOCK 3 OF KENSINGTON HEIGHTS SUBDIVISION

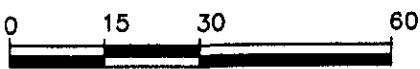
LOCATED IN "GOVERNMENT" LOT 4
SECTION 18, T1N, R8E, BHM,
RAPID CITY, PENNINGTON COUNTY, SOUTH DAKOTA



PORTION OF NON-ACCESS EASEMENT AS SHOWN IN PLAT BOOK 34 PAGE 130 TO BE VACATED THIS DOCUMENT.

PORTION OF
E 1/2 OF THE S 1/2
OF "GOVERNMENT" LOT 4

AUGUST 20, 2007



SCALE: 1" = 30'

