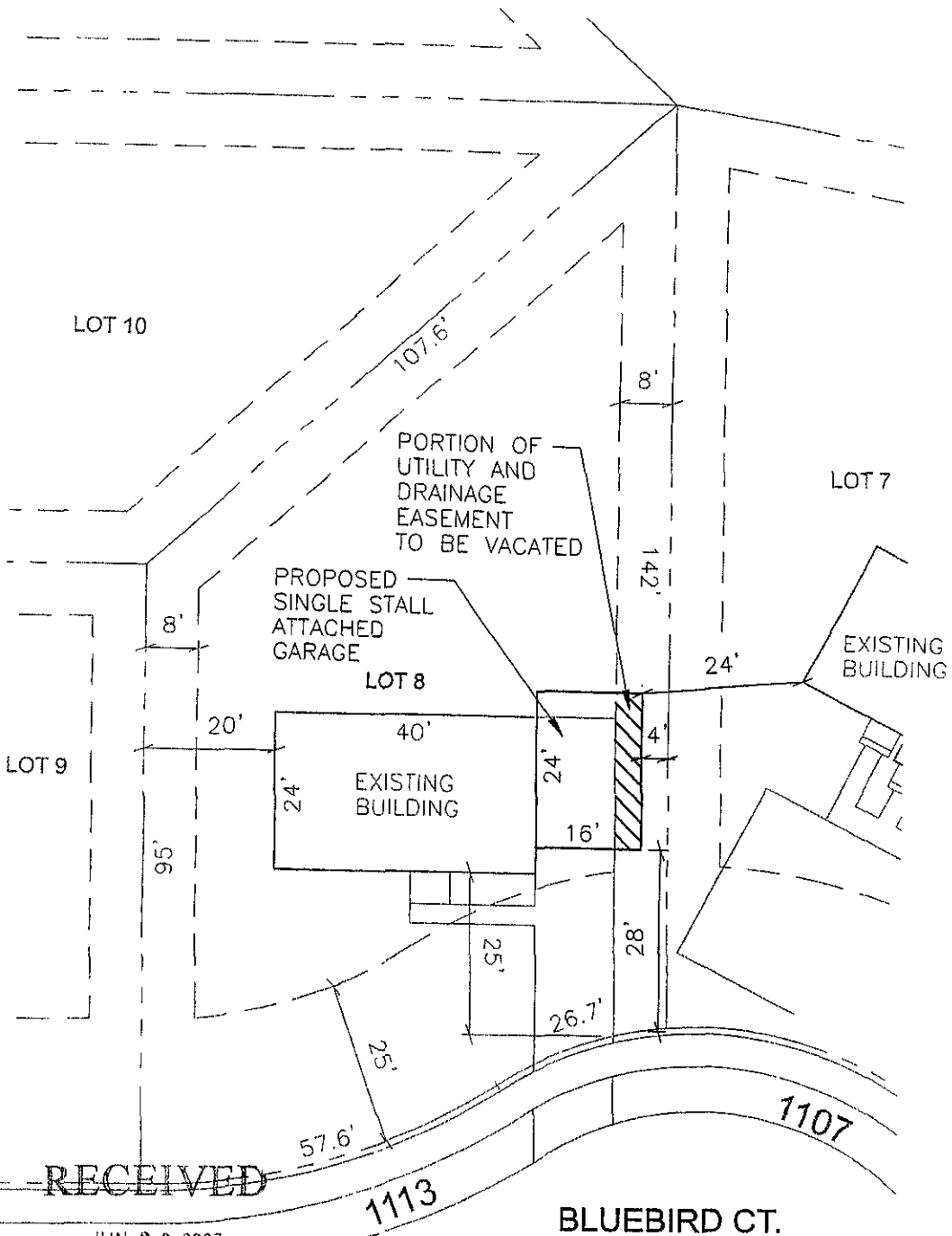


VACATION OF UTILITY AND DRAINAGE EASEMENT
LOT 8 OF BLOCK 1, ROBBINSDALE ADDITION #9

LOCATED IN THE NW 1/4 OF THE NE 1/4 OF SECTION 18, T1N, R8E, BHM.
RAPID CITY, PENNINGTON COUNTY, SOUTH DAKOTA



RECEIVED

JUN 20 2007

Rapid City Growth Management Department



SCALE: 1" = 20'



PREPARED BY:
enVision Design, Inc
706 WEST BOULEVARD
RAPID CITY, SOUTH DAKOTA

enVision
Design Inc

DRAWN BY R. DEIBERT DATE 06-18-07
CHECKED BY C. HULS DATE 06-18-07