

VACATION OF A PORTION OF THE 8' WIDE UTILITY & MINOR DRAINAGE EASEMENT

LOT 1B OF NORTH 80 SUBDIVISION

LOCATED IN "GOVERNMENT" LOT 2

SECTION 19, T1N, R8E, BHM,

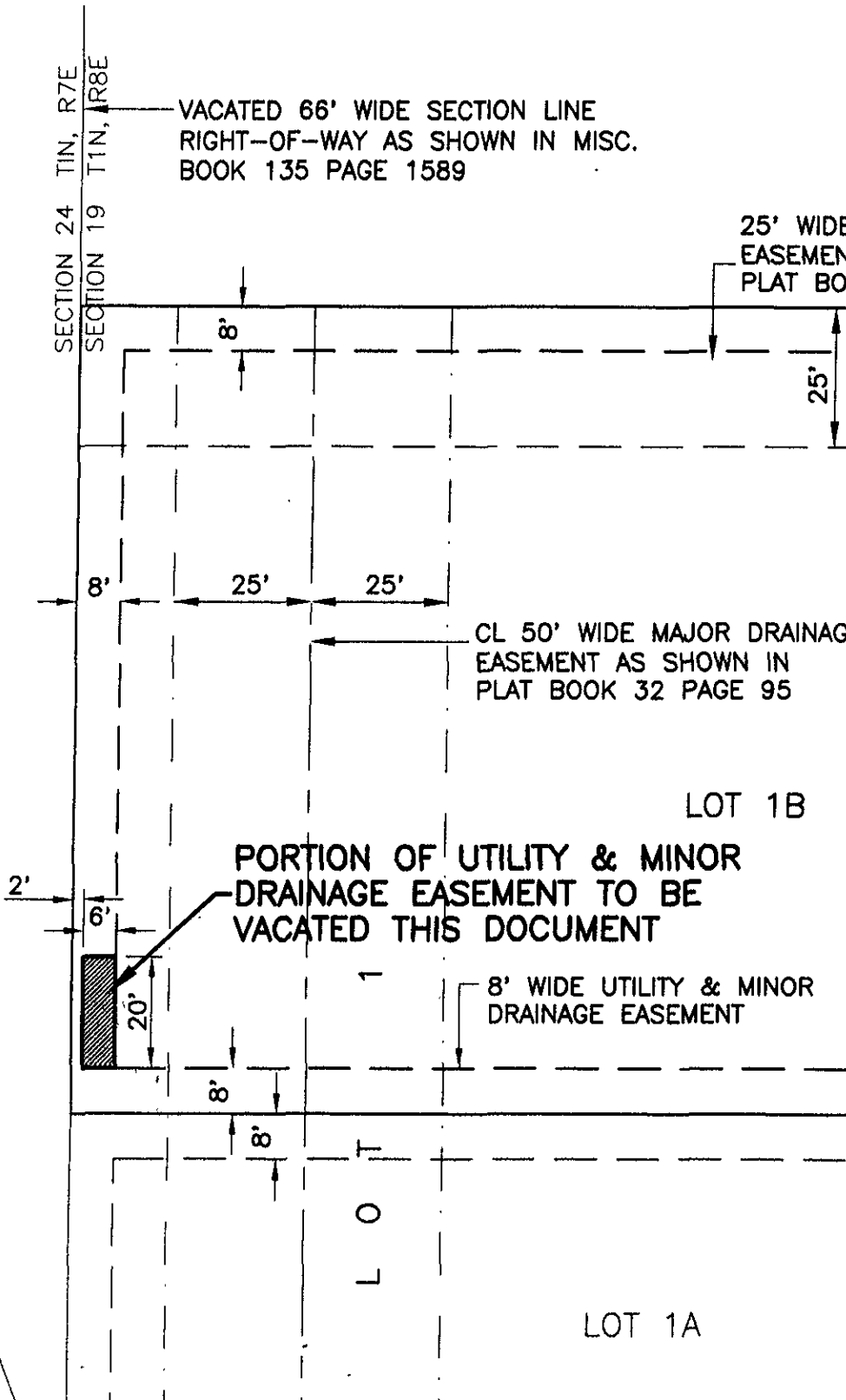
RAPID CITY, PENNINGTON COUNTY, SOUTH DAKOTA

RECEIVED

MAY 23 2007

Rapid City Growth
Management Department

25' WIDE MAJOR DRAINAGE
EASEMENT AS SHOWN IN
PLAT BOOK 32 PAGE 95



MAY 22, 2007



SCALE: 1" = 30'

