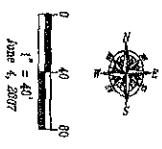


Lot 2 of Pract B
Control Data Addition

SURVEYOR'S NOTES
 No utility markers were permitted for this subdivision.
 Locations of water, traffic and natural gas lines are approximate.
 Bench Mark: STA 2038, 3338.6, 3630.25
 Basis of Bearings: GPS Observation

ENGINEER'S NOTES
 Sight Distance evaluation per Figures 2-2 (Over) City of Rapid City Design Criteria Manual (Nov 2006).
 Sight Line represents distance to (right turn only) for trucks with forward sweep of 100 feet on Disk Drive.
 Observer Height: 5' 5" (average) 5' 8"

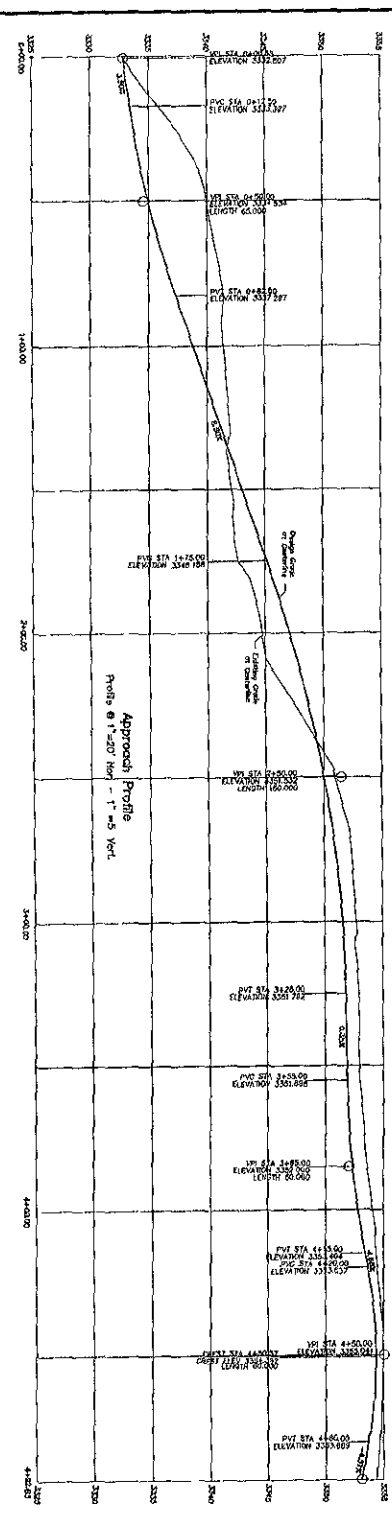
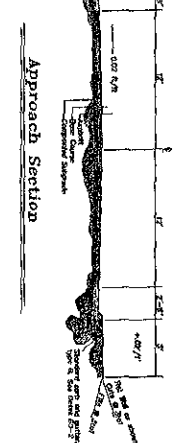
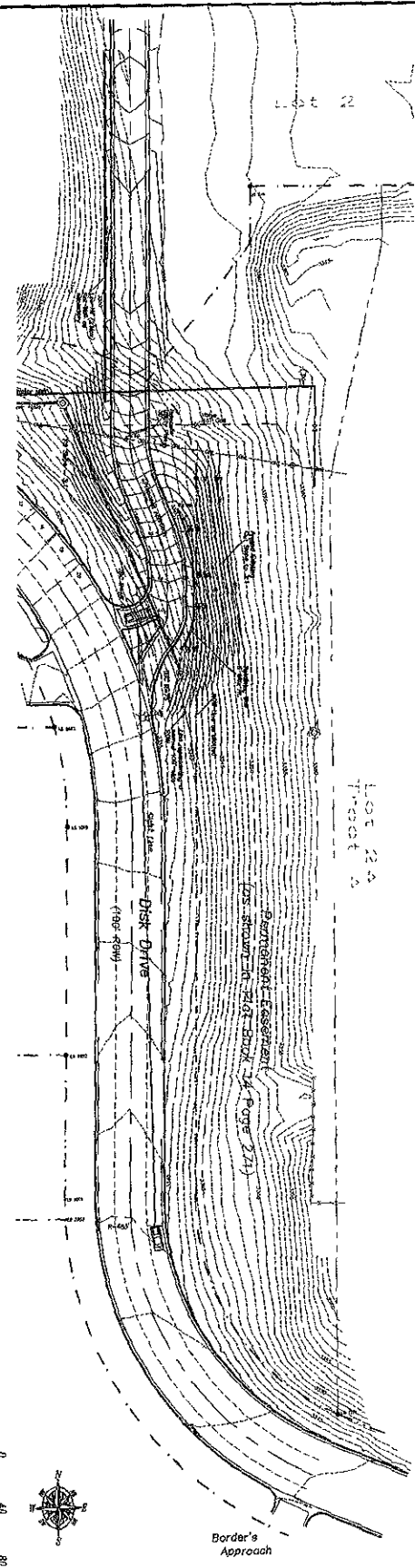
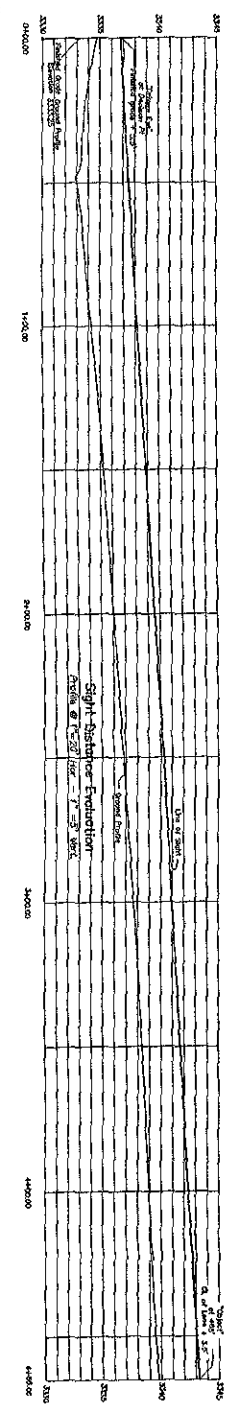
- LEGEND**
- ⊗ = Surveyed Monument
 - ⊙ = Station
 - ⊕ = (Survey station)
 - ⊖ = (Survey station)
 - ⊗ = ERM Monument
 - ⊙ = Utility Pole
 - ⊕ = Street Light
 - ⊖ = Street Light
 - ⊗ = Survey Line
 - ⊙ = Survey Line
 - ⊕ = Survey Line
 - ⊖ = Survey Line
 - ⊗ = Survey Line
 - ⊙ = Survey Line
 - ⊕ = Survey Line
 - ⊖ = Survey Line



Project No.	07-09-002
Sheet	1 of 2
Drawn by	RWR/SL
Date	5/18/07
Checked by	W
Reviewed by	
Surveyed by	ALDN
Date	5/7/07
Drawn by	RWR/SL
Date	5/18/07

Fisk Land Surveying & Consulting Engineers, Inc.

Proposed Access Sight Distance Evaluation
 Lot 2 of Lowe's Subdivision
 Located in the NW1/4 of NE1/4 of
 Section 25, T2N, R7E, BHM,
 Rapid City, Pennington County, South Dakota

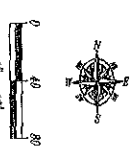


ENGINEER'S NOTES

Sight distance evaluation per Figure 2-2 (R-10)
 City of Rapid City Design Criteria Manual (May 2005)
 Sight Line represents distance of sight (two way)
 for trucks with posted speed of 30 MPH on Dusk Drive
 Division Point is 15' behind ZOC

APPROACH NOTES

General vehicle weight category as shown
 NOTE: Roadway width for location with 10' posted speed
 All retaining walls to be constructed on outside of a 10' or 10' wide
 utility pipe to be indicated as shown.
 All pipe and grades from Station 2+50 to end are for alignment
 purposes only. Actual alignment and grades may be configured to conform
 with development plans for Lot 2 (future development)



LEGEND

- ⊙ Sewer Service Manhole
- ⊙ Fire Hydrant
- ⊙ Utility Pole
- ⊙ Street Light
- ⊙ Day Mark
- Power Line or Utility Line
- Sanitary Sewer Line
- Storm Sewer Line
- Survey Monument on rock

SURVEYOR'S NOTES

No utility locates were performed
 for this evaluation.
 Locations of water mains and natural
 gas lines are approximate.
 Bench Mark: STA 2039 3338.6' NGVD 29
 Scale of Benchmarks: GPS Observation

Proposed Access Sight Distance Evaluation
 Lot 2 of Lowe's Subdivision
 Located in the NW1/4 of NE1/4 of
 Section 25, T2N, R7E, BHM,
 Rapid City, Pennington County, South Dakota

Fisk Land Surveying
 & Consulting
 Engineers, Inc.



Prepared by:	07-06-03
Checked by:	07-06-03
Reviewed by:	07-06-03
Drawn by:	07-06-03
Date:	07-06-03
Sheet:	2 of 2