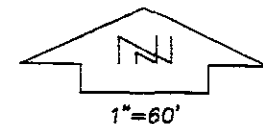


# BOUNDARY SURVEY

LOT B OF LOT 3, AND LOT C OF LOT 3, DAIRYLAND SUBDIVISION  
RAPID CITY, SOUTH DAKOTA



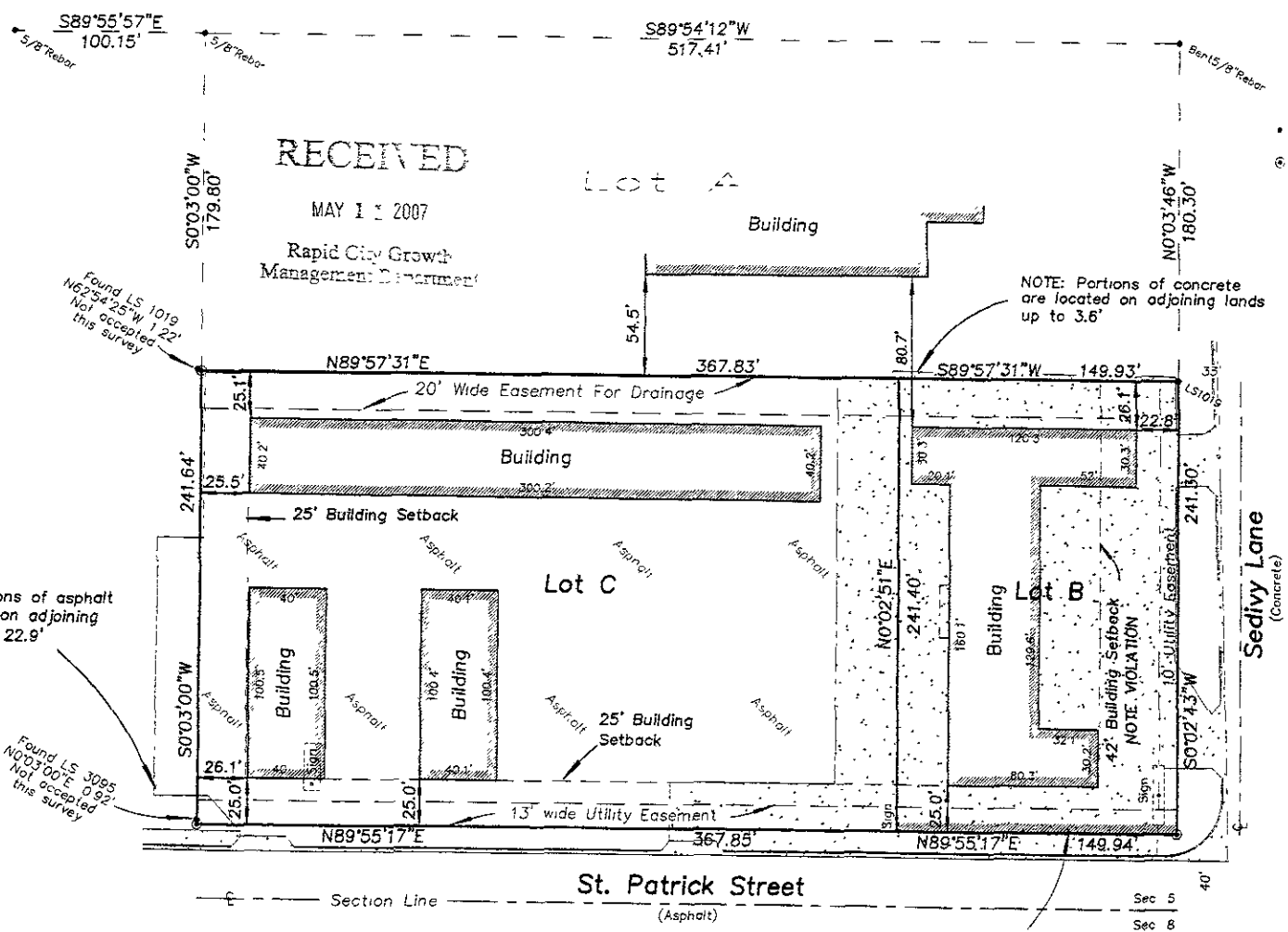
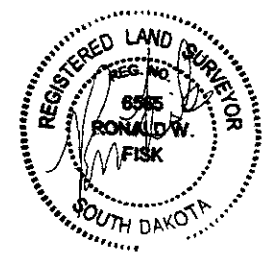
### LEGEND

- = Found Survey Monument as noted as noted
- ⊙ = Set Rebar with cap marked "RW Fisk 6565"

RECEIVED

MAY 1 2007

Rapid City Growth Management Department



RECEIVED

MAY 1 2007

Rapid City Growth Management Department

NOTE: Portions of asphalt are located on adjoining lands up to 22.9'

NOTE: Portions of concrete are located on adjoining lands up to 3.6'

Found LS 3095 N0°03'00"E 0.99' Not accepted this survey

Found LS 1019 N62°54'25"W 1.22' Not accepted this survey

No Vehicular Access  
onto or off East St Patrick Street