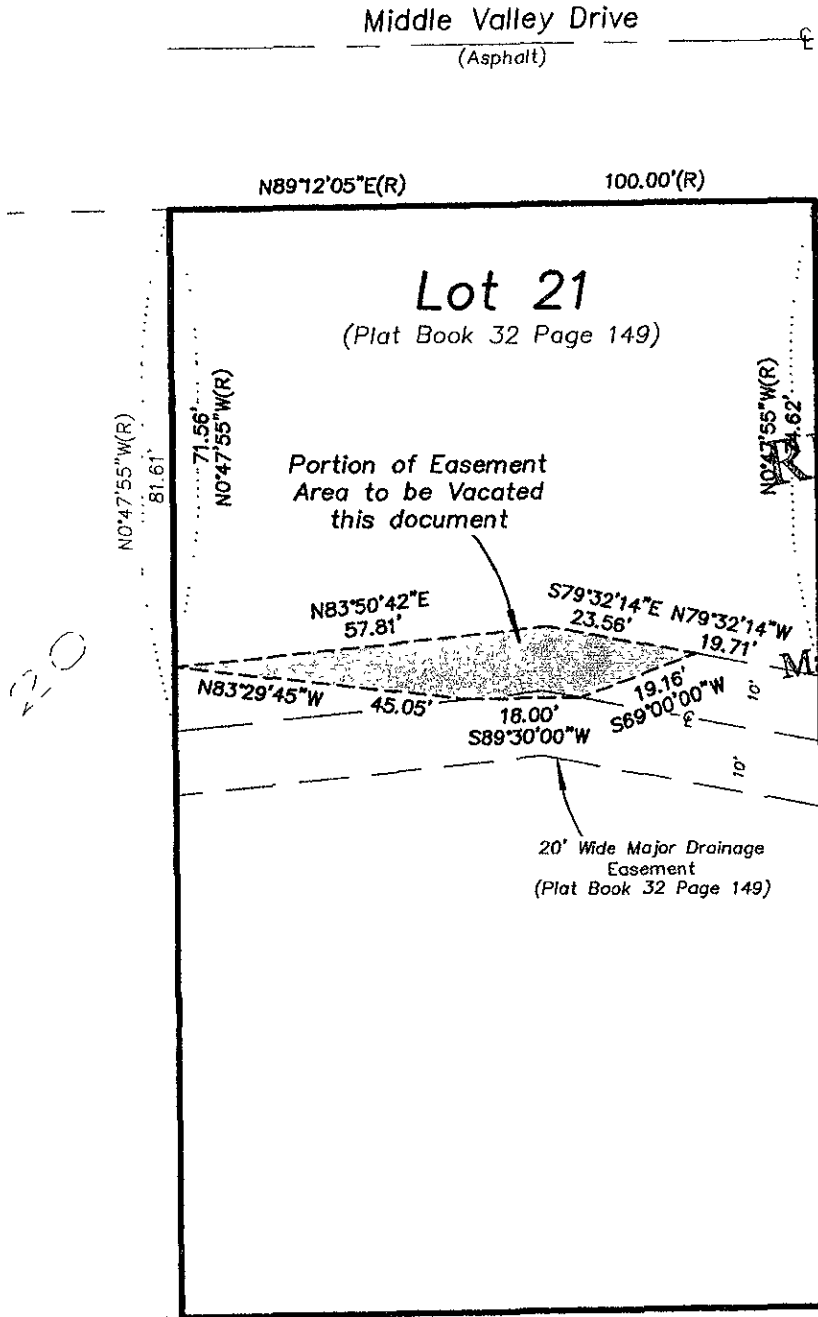
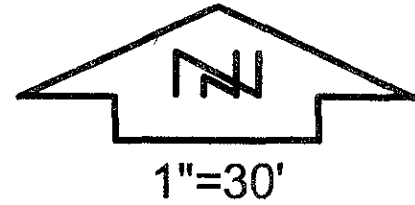


VACATION OF A PORTION OF MAJOR DRAINAGE EASEMENT
LOT 21, MINNESOTA RIDGE HEIGHTS SUBDIVISION
LOCATED IN THE SW1/4 OF SECTION 13, T1N, R7E, B.H.M.
RAPID CITY, PENNINGTON COUNTY, SOUTH DAKOTA



RECEIVED
APR 11 2007

Rapid City Growth
Management Department

