

# MAJOR DRAINAGE EASEMENT

## LOT 1 OF BLOCK 3 OF STONEY CREEK SUBDIVISION

LOCATED IN THE SW<sup>1</sup>/<sub>4</sub> OF THE NW<sup>1</sup>/<sub>4</sub>,  
SECTION 22, T1N, R7E, B.H.M.,  
RAPID CITY, PENNINGTON COUNTY, SOUTH DAKOTA

LOT 41 OF BLOCK 2  
AUTUMN HILLS SUBDIVISION

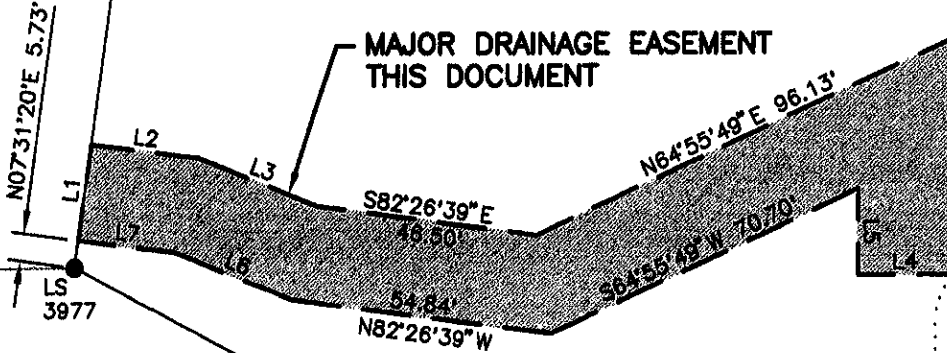
LOT 28 OF BLOCK 6  
SPRINGBROOK ACRES

WINTERSET DRIVE  
49' R.O.W. OF RECORD

LOT 1 OF BLOCK 3

LINE	LENGTH	BEARING
L1	20.00	N07°31'20" E
L2	23.00	S82°54'55" E
L3	26.93	N68°16'34" W
L4	20.00	S89°45'11" W
L5	17.94	N00°14'49" W
L6	26.85	N68°16'34" W
L7	20.58	N82°54'55" W

MAJOR DRAINAGE EASEMENT  
THIS DOCUMENT



LOT 27 BLOCK 6  
SPRINGBROOK ACRES



APRIL 19, 2007



SCALE: 1" = 40'

LOT 26 BLOCK 6  
SPRINGBROOK ACRES

LOT 2 OF BLOCK 3

N00°14'49" W 96.02'

LS 3977

# RECEIVED

APR 19 2007  
LOT 7 OF BLOCK 3

Rapid City Growth  
Management Department

LOT 8 OF BLOCK 3

