

VACATION OF 20' WIDE MAJOR DRAINAGE EASEMENT LOT 1 OF BLOCK 3 OF STONEY CREEK SUBDIVISION

LOCATED IN THE SW¹/₄ OF THE NW¹/₄,
SECTION 22, T1N, R7E, B.H.M.,
RAPID CITY, PENNINGTON COUNTY, SOUTH DAKOTA

WINTERSET DRIVE
49' R.O.W. OF RECORD

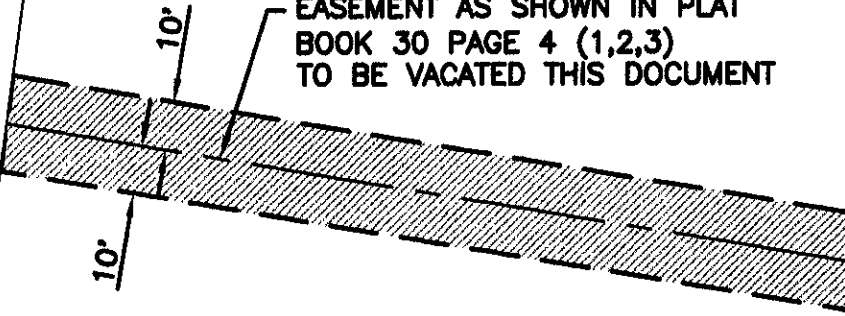
LOT 41 OF BLOCK 2
AUTUMN HILLS SUBDIVISION

LOT 28 OF BLOCK 6
SPRINGBROOK ACRES

LOT 1 OF BLOCK 3

EXISTING UTILITY & DRAINAGE
EASEMENT AS SHOWN IN PLAT
BOOK 30 PAGE 4 (1,2,3)
TO BE VACATED THIS DOCUMENT

LOT 27 BLOCK 6
SPRINGBROOK ACRES



APRIL 19, 2007



SCALE: 1" = 40'

LOT 2 OF BLOCK 3

LOT 26 BLOCK 6
SPRINGBROOK ACRES

LOT 8 OF BLOCK 3

RECEIVED

APR 19 2007
Rapid City Growth
Management Department

