

**PERMISSION TO REQUEST ENGINEERING DESIGN PROPOSALS
FOR
MEADOWBROOK GOLF COURSE BRIDGE REPAIRS

BRIDGE NO. 52-387-313**

PROJECT DESCRIPTION

The City of Rapid City proposes to contract for the engineering design, construction management and inspection services to repair a structurally unsound bridge near the Meadowbrook Club House. The repairs include replacing the north span and modify the north abutment on the existing structure. The existing span will probably be replaced with a pre-cast concrete double tee unit. The north abutment will need to be disassembled and modified to match the rest of the structure. The timber back walls will probably be replaced with concrete plank to prevent further deterioration and maintenance problems.

Design services shall include review of the bridge inspection report and design repairs to meet bridge safety standards. Engineering services will include the design, plans and specifications, construction bid documents, project management, surveying and construction inspection.

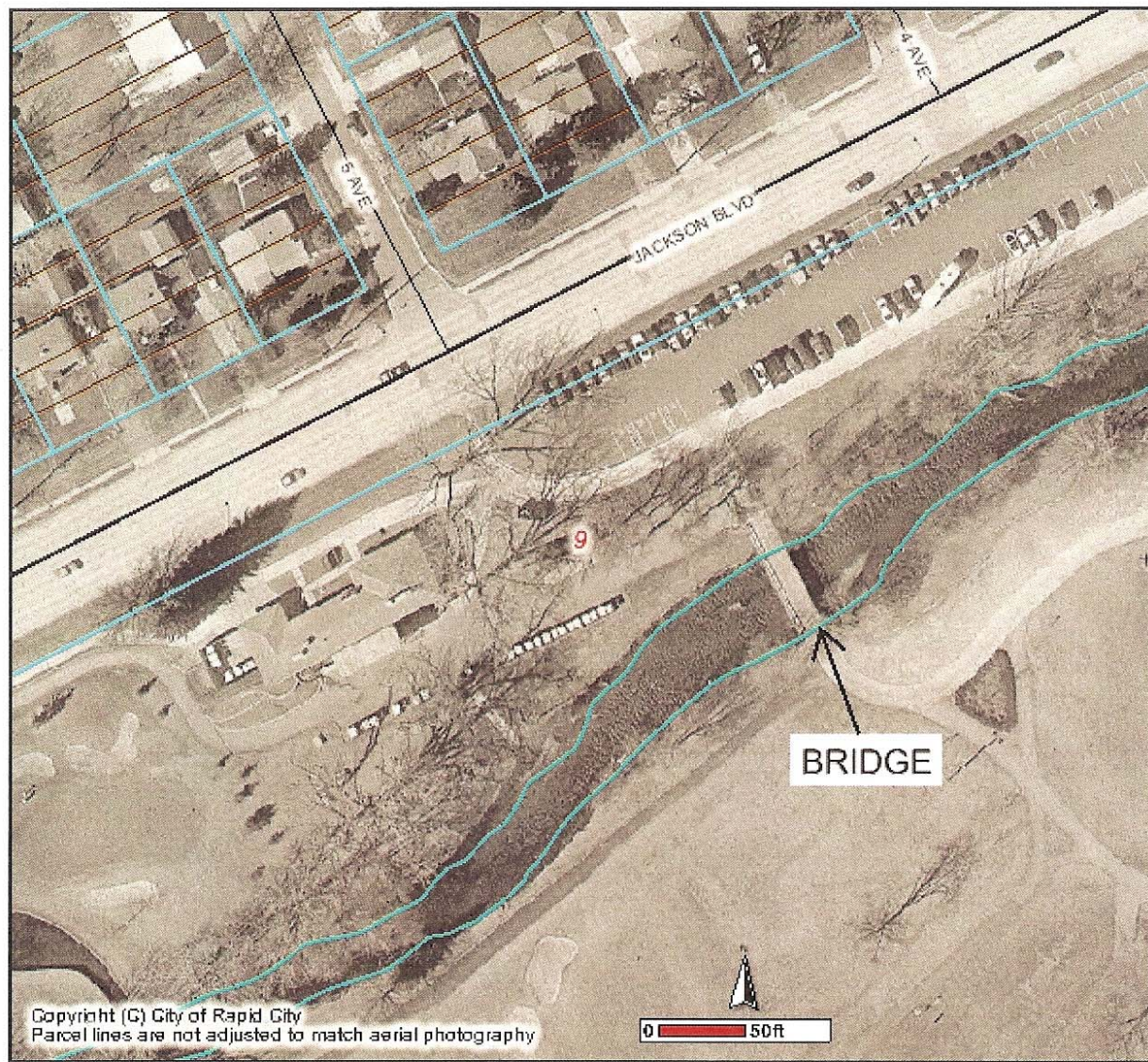
Design criteria for this project shall include AASHTO Standard Specifications for Highway Bridges, 2002 Edition using Load Factor Design Method, South Dakota Standard Specifications for Roads and Bridges, 2004 Edition and the Rapid City Standard Specifications for Public Works Construction – version 2004.

The project currently has a total design and construction repair budget of \$40,000 from the Parks 8912 CIP funds.

PW041007-15

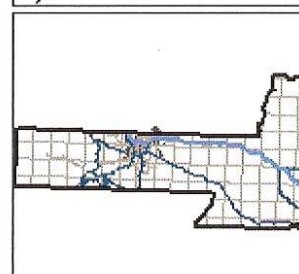
MEADOWBROOK BRIDGE

Print



Roads

- Not classified
- Interstate
- US Highway
- SD Highway
- County Highway
- Main Road
- Minor Arterial
- Collector
- Ramp
- Paved Road
- Unpaved Road
- Unimproved Road
- Trail
- other

**RapidMap**

DISCLAIMER

DISCLAIMER: This GIS data is provided 'any representation of accuracy, timelines: burden for determining accuracy, complete merchantability and fitness for or the app solely on the requester. Rapid City and P no warranties, express or implied, as to th implied warranties of merchantability or fil purpose are specifically disclaimed. The r and accepts the limitations of the data, in data is dynamic and is in a constant state correction and update. This document do survey of the land. There are no restrictio printed Rapid City/Pennington County ma Rapid City copyright/credit notice be legib agrees to recognize and honor in perpetu other proprietary claims for the GIS Prodi produced by the City of Rapid City or the items to the City of Rapid City.