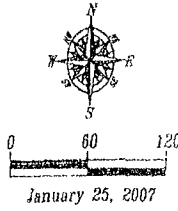


PLAT OF LOT H-9

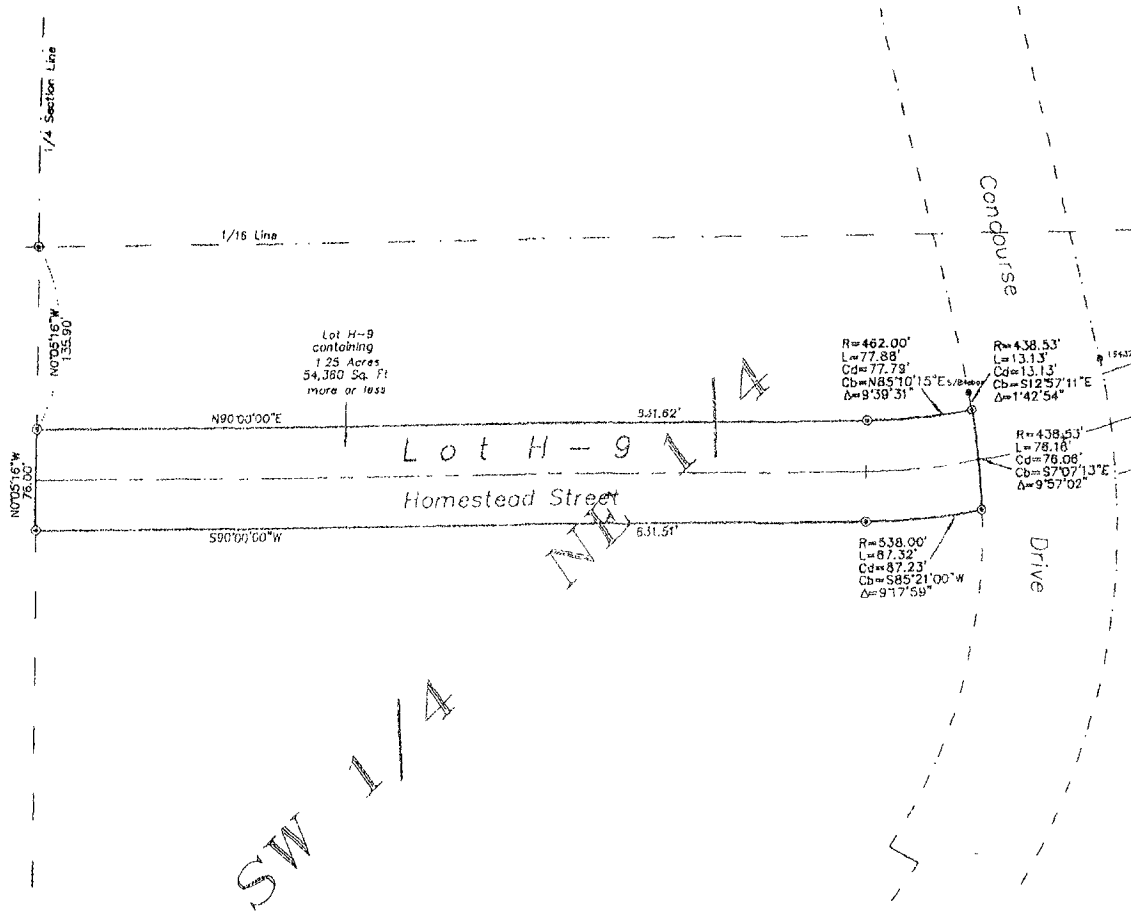
Showing a tract of land to be dedicated for highway purposes
in the SW1/4 NE 1/4 Section 4, T1N, R8E, B.H.M.

Rapid City, Pennington County, South Dakota

Scale: 1" = 60'



- = Found Survey Monument as noted
- ⊙ = Set Rebar with cap marked "RW Fisk 6565"

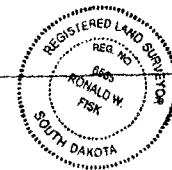


SURVEYOR'S CERTIFICATE

I, Ronald W. Fisk, Registered Land Surveyor in the State of South Dakota, do hereby state that at the direction of the City of Rapid City this tract of land as shown on this plat has been surveyed at my direction and under my control, and such tract of land shall be hereafter known by the lot number designated herein. The location and dimensions of the tract are shown on this plat.

In witness whereof,
I have set my hand and seal this 26th day of JANUARY, 2007

R. W. Fisk
Ronald W. Fisk
Registered Land Surveyor



Fisk Land Surveying and Consulting Engineers, Inc.
P. O. Box 8154
Rapid City, SD 57709
(605) 348-1578