



CITY OF RAPID CITY

Engineering Services

300 Sixth Street
Rapid City, SD 57701-5035

Telephone: (605) 394-4154

FAX: (605) 394-6636

E-mail: keith.johnson@rcgov.org

January 22, 2007

Public Works Committee/Common Council

RE: Request Authorization to Seek Proposals for Engineering Services for Project W07-1631 CIP #50465 Memorial Park and Farlow Avenue Water Main Reconstruction

Staff proposes to reconstruct the existing 24" and 20" water mains which begin near the southwest corner of the Rushmore Holiday Inn and extends north in Dilger Avenue to Anamosa Street. The existing 4" water main in Farlow Avenue will also be reconstructed.

The project includes construction of approximately 3625 feet of 24" water main and approximately 2500 feet of 8" water main, and appurtenances. The 24" main near Omaha Street was heavily corroded by corrosive soils and the remainder of the water main is in areas known to have highly corrosive soils. The 24" water main between Omaha Street and the Holiday Inn was reconstructed in 2005. This project will reconstruct the water main from the end of the 2005 project to Anamosa Street. The 24" water main is the primary water supply to the north part of the City.

Staff proposes to hire a Consultant Engineer to be responsible for designing the project, construction observation and administration, and project closeout.

Funding for this project is the Water Enterprise Fund. The project budget is \$2,115,000, which includes design and construction fees.

Staff proposes to design and bid the project in 2007 with construction to be completed in 2008.

The operation and maintenance costs after completion of this project will be minimal. The project will result in new water mains with an anticipated useful life of approximately 75 years.

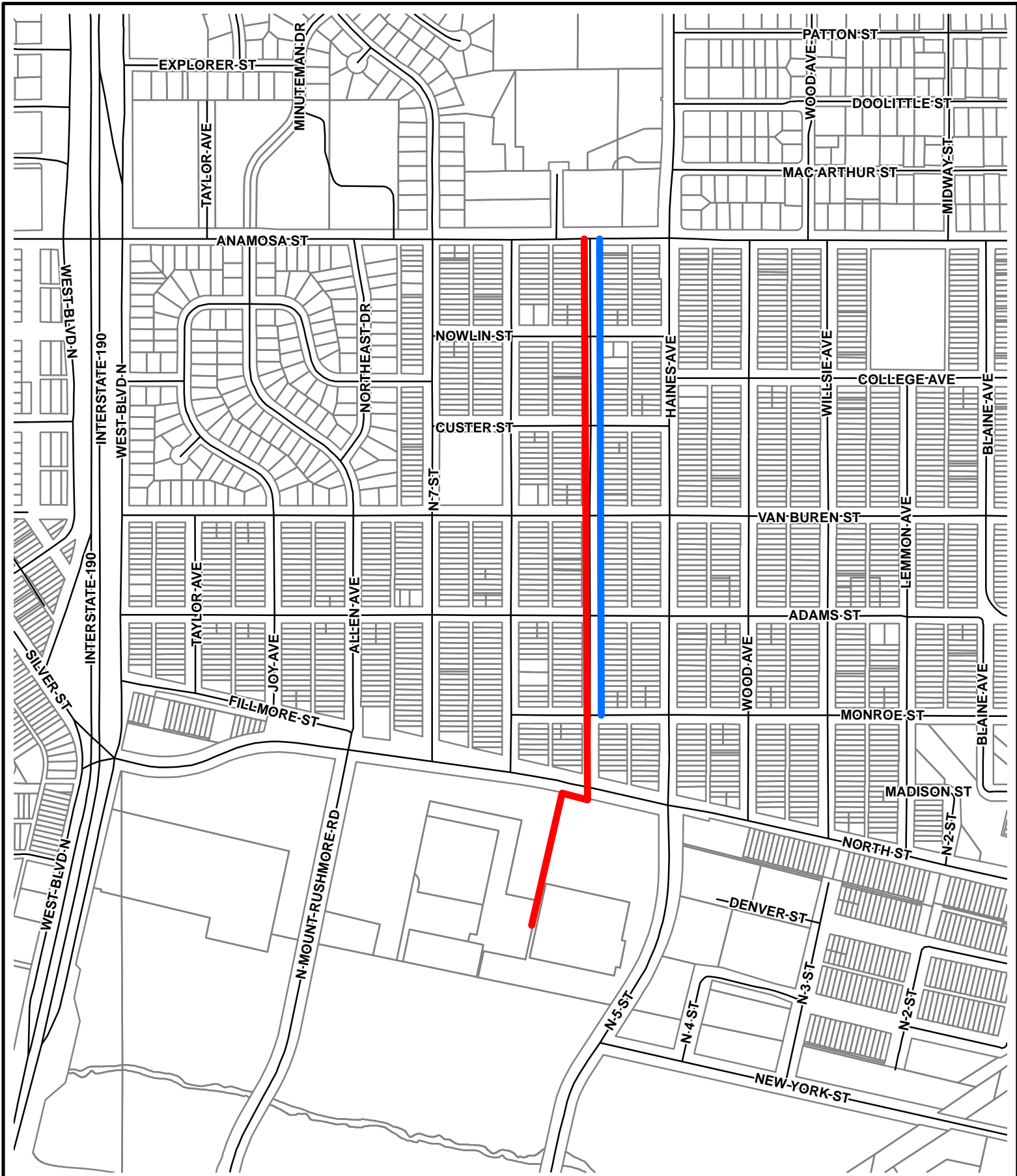
Keith Johnson
Project Administrator

cc: Dirk Jablonski, Public Works Director



EQUAL HOUSING
OPPORTUNITY

EQUAL OPPORTUNITY EMPLOYER



**MEMORIAL PARK AND FARLOW AVENUE
WATER MAIN RECONSTRUCTION
PROJECT NO. W07-1631 CIP # 50465**