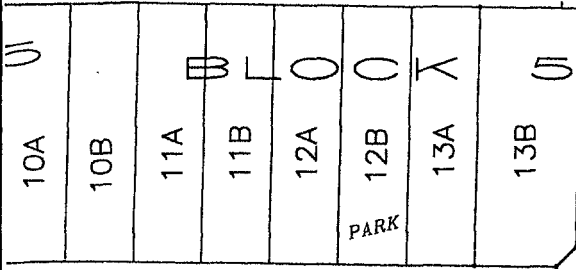


EXISTING
TEMPORARY
TURNAROUND
EASEMENT

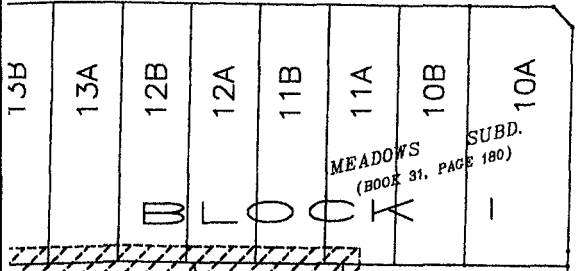
(FUTURE PLATTING)

**(UNPLATTED
PORTION OF SET 1/4 NE1/4
SEC. 7 T1N, R8E B.H.M.)**



MERLOT DRIVE

(60' PUBLIC R.O.W.)

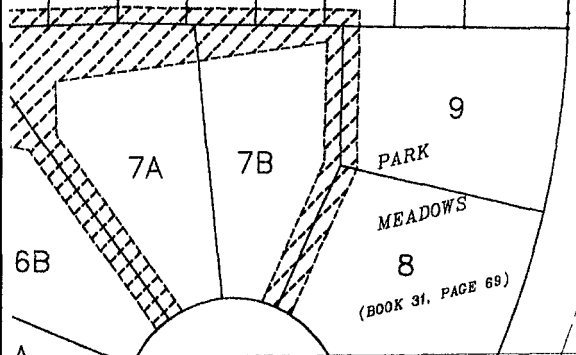


MEADOWS
(BOOK 31, PAGE 180)

SUBD.
(BOOK 31, PAGE 180)

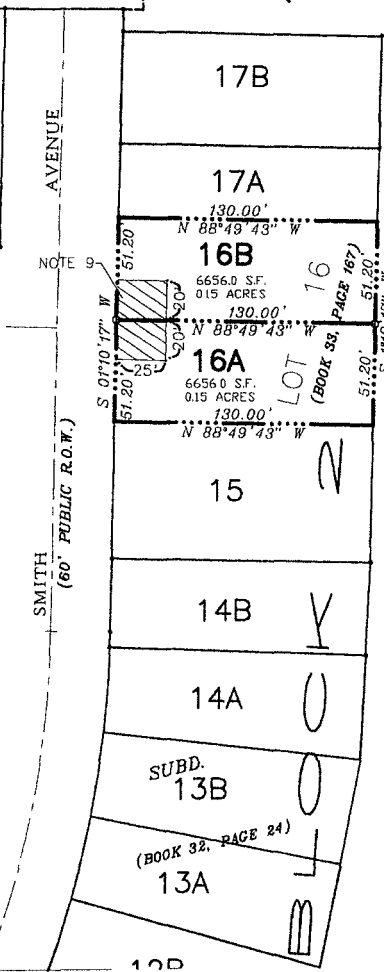
B L O C K

SMITH AVENUE
(60' PUBLIC R.O.W.)



MEADOWS
(BOOK 31, PAGE 69)

PARK



17B

17A

16B

6656.0 SF.
0.15 ACRES

16A

6656.0 SF.
0.15 ACRES

LOT 16
(BOOK 32, PAGE 167)

15

14B

14A

SUBD.
13B

(BOOK 32, PAGE 24)

13A

12B

NOTE 9

S 01°10'17" W
51.20'
S 01°10'17" W
51.20'

130.00'
N 88°49'43" W

130.00'
N 88°49'43" W

130.00'
N 88°49'43" W

S 17°10'17" W
51.20'

LEGEND

- SET 5/8" REBAR W/ CAP MARKED C&E/C LS 4725
- FOUND SURVEY MONUMENT
- (R) INDICATES DIMENSION PREVIOUSLY RECORDED
- (M) INDICATES DIMENSION MEASURED THIS SURVEY

