

Plat of Lots 1 through 4 of Brentwood Subdivision
 (Formerly all of the S1/2 NW1/4 SW1/4 SE1/4; S1/2 NE1/4 SW1/4 SE1/4;
 SW1/4 SW1/4 SE1/4; SE1/4 SW1/4 SE1/4; SW1/4 SE1/4 SE1/4 of Section 25 T1N, R6E, BHM,
 Located in the SE1/4 of Section 25 T1N, R6E, BHM,
 Pennington County, South Dakota

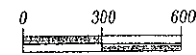
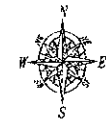
Prepared by
 Fish Land Surveying & Consulting Engineers, Inc
 P O Box 9154
 Rapid City, SD 57709
 (605) 348-1538
 Project No 05 05-03

B Utility and Minor Drainage Easements
 on the interior sides of all lot lines

All Major Drainage Easements Shown Hereon
 Shall Be Keep Free Of All Obstructions Including
 But Not Limited To Buildings, Walls, Fences,
 Yedges, Trees And Shrubs. These Easements
 Grant To All Public Authorities The Right To
 Construct, Operate, Maintain, Inspect, And Repair
 Such Improvements And Structures As It Deems
 Expedient To Facilitate Drainage From Any Source

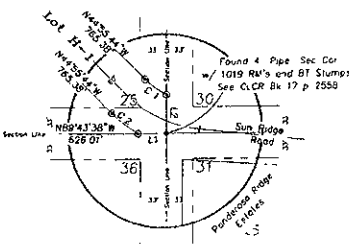
Sun Ridge Road and Pushing Place as shown hereon
 and containing 3.08 Acres are hereby dedicated as
 Public Right-of-Way. However such dedication shall not
 be construed to mean a donation of the fee of said land

Prior to obtaining a Building Permit for a residence on any of
 the properties two suitable on-site wastewater system areas
 must be identified with accompanying percolation tests and soil profiles
 Soil profiles must show that proper soil separation can be obtained
 as outlined in State Administrative Rule 74 53 01 15. Percolation tests
 must meet acceptable rates as shown in State Administrative Rule
 74 53 01 32. If the percolation and soil profile information do not
 meet these requirements an alternative system approved by the
 Department of Environment and Natural Resources could be used
 As a last resort Pennington County may approve the use of holding tanks



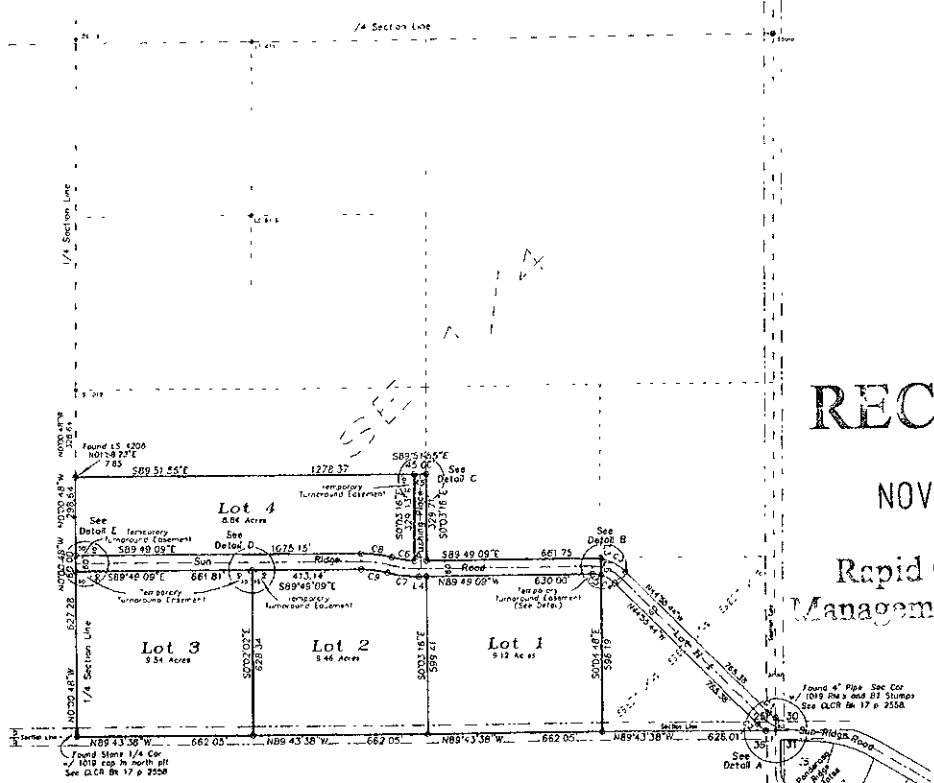
1" = 300'
 October 10, 2006

● = Found Survey Monument marked as noted
 ⊙ = Set Rebar with cap marked "RW 17x 6565"



Detail A
 Scale 1"=100'

PRELIMINARY



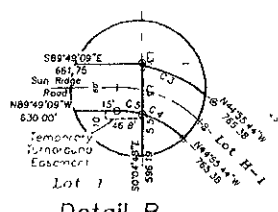
RECEIVED

NOV 07 2006

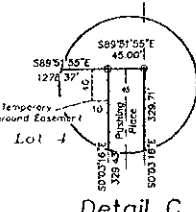
Rapid City Growth
 Management Department

NUM	DELTA	ARC	RADIUS	BEARING	DISTANCE
C1	16°10'14"	33.87	120.00'	S53°00'51"E	33.76
C2	13°36'48"	42.77	180.00'	S51°44'07"E	42.67
C3	34°48'30"	109.35	180.00'	N62°19'55"W	107.81
C4	29°31'42"	61.84	120.00'	N59°41'35"W	61.16
C5	15°21'44"	32.17	120.00'	N62°08'17"W	32.08
C6	13°39'11"	68.17	370.00'	S60°54'16"E	67.98
C7	15°56'36"	119.80	430.00'	S62°03'58"E	119.57
C8	15°44'29"	118.14	430.00'	N61°56'55"W	117.77
C9	15°44'29"	101.65	370.00'	N61°56'55"W	101.53

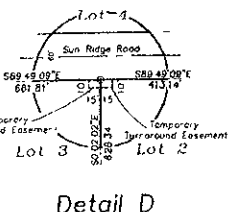
NUM	BEARING	DISTANCE
L1	S69°43'38"E	38.63
L2	S00°51'19"E	48.65
L3	S00°44'48"E	2.78
L4	S89°49'02"E	30.00
L5	N00°44'40"W	61.51



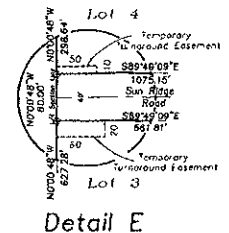
Detail B
 Scale 1"=100'



Detail C
 Scale 1"=100'



Detail D
 Scale 1"=100'



Detail E
 Scale 1"=100'