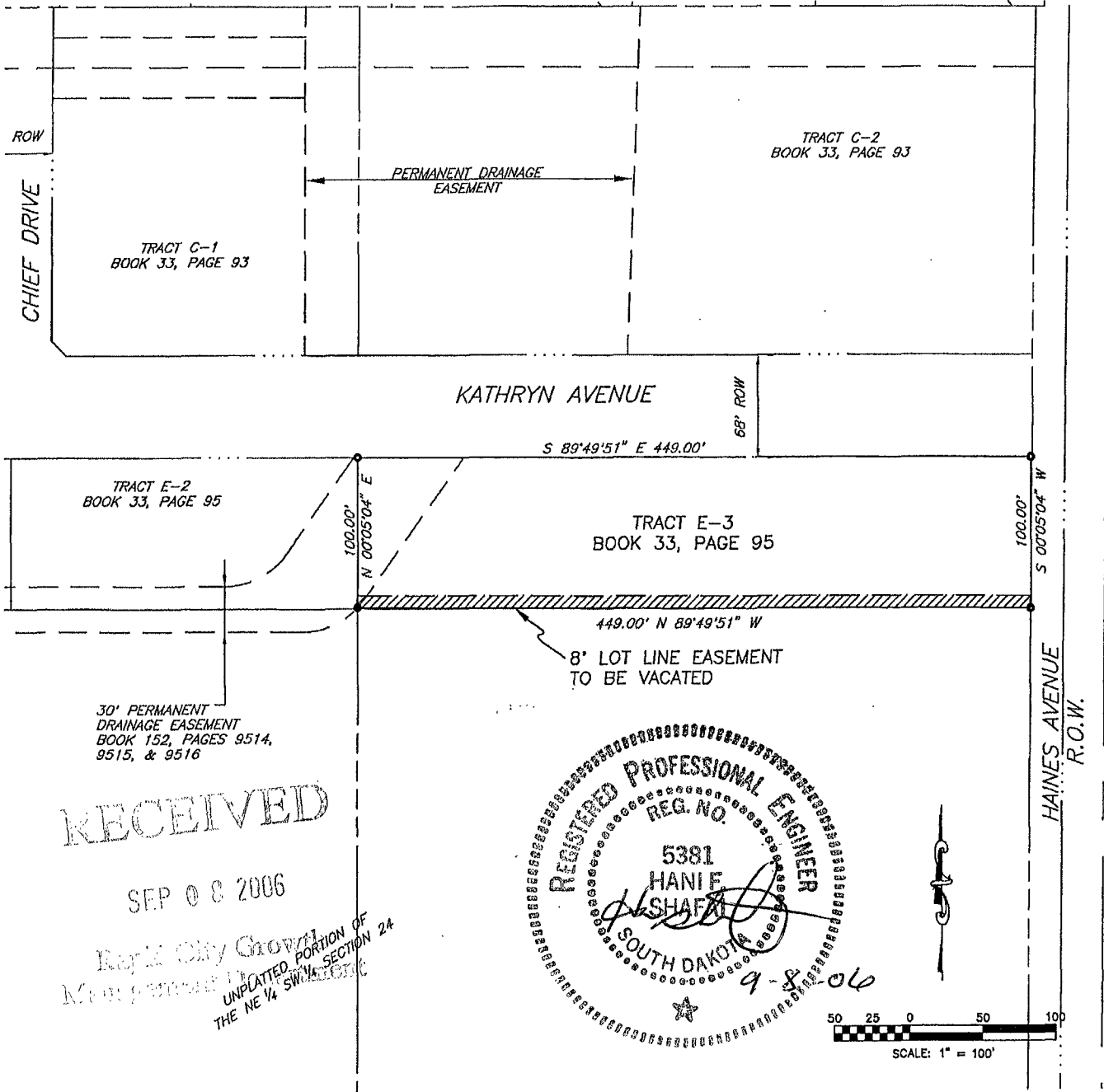


EXHIBIT A
VACATION OF EASEMENT
McMAHON SUBDIVISION

TRACT E-3 OF McMAHON SUBDIVISION
LOCATED IN THE NE 1/4 SW 1/4 OF SECTION 24, T2N, R7E, BHM
RAPID CITY, PENNINGTON COUNTY, SOUTH DAKOTA



McMahon Subdivision Lot E3-R

JOB NO: 05-0372

REV 1:

DATE: 08/18/2006

REV 2:

DRAWN BY: MLS

REV 3:



D.D.I.

DREAM DESIGN INTERNATIONAL, INC.
PROFESSIONAL STRUCTURAL & CIVIL ENGINEERING CONSULTANTS

628 KANSAS CITY ST., SUITE 4, RAPID CITY, SD 57701
PH. 605-348-0538 FAX. 605-348-0645 EMAIL: engineers@dreamdesigninc.com