

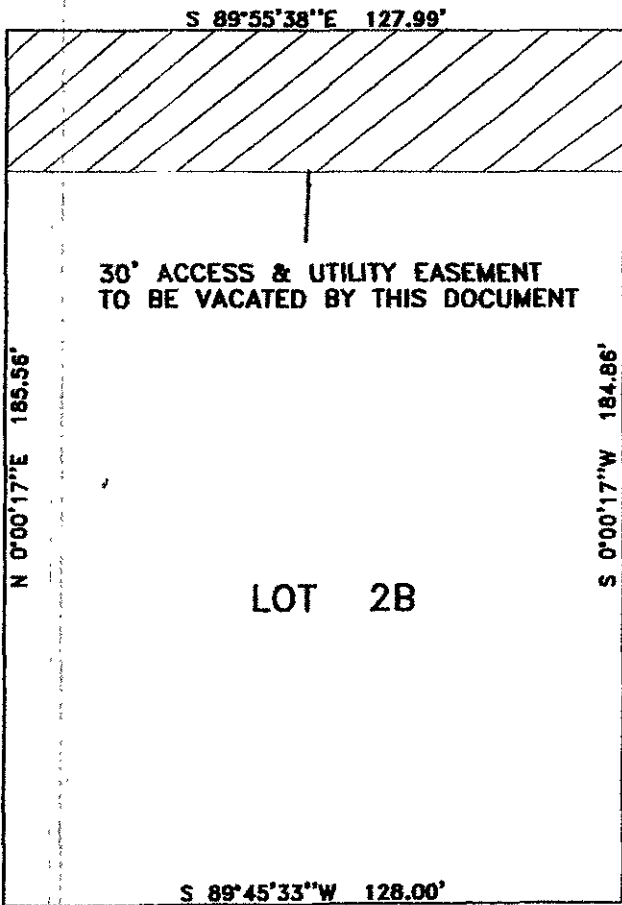
## VACATION OF 30' ACCESS &amp; UTILITY EASEMENT

LOT 2B OF LOT B OF BRADSKY SUBDIVISION  
 LOCATED IN NE1/4SE1/4 OF SECTION 6, T1N, R8E, B.H.M.  
 RAPID CITY, PENNINGTON COUNTY, SOUTH DAKOTA



1" = 40'

EXISTING ACCESS, PARKING AND CIRCULATION EASEMENT TO REMAIN



CAMBELL STREET

LOT 1B