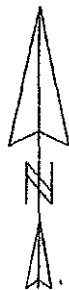


CREATION OF 30' ACCESS EASMENT

LOT 2B OF LOT B OF BRADSKY SUBDIVISION

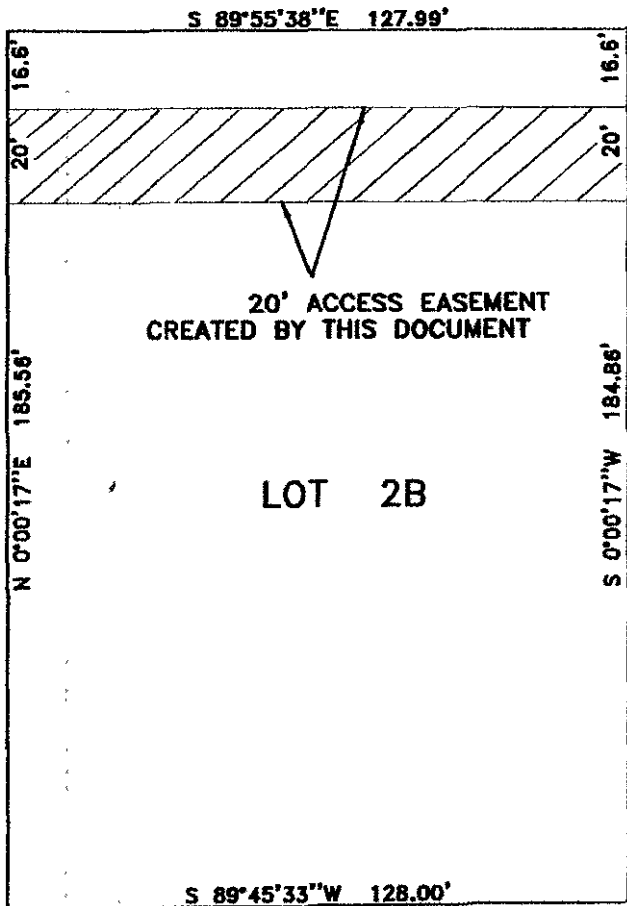
LOCATED IN NE1/4SE1/4 OF SECTION 6, T1N, R8E, B.H.M.

RAPID CITY, PENNINGTON COUNTY, SOUTH DAKOTA



1" = 40'

EXISTING ACCESS, PARKING AND CIRCULATION EASEMENT TO REMAIN



CAMBELL STREET

LOT 1B