

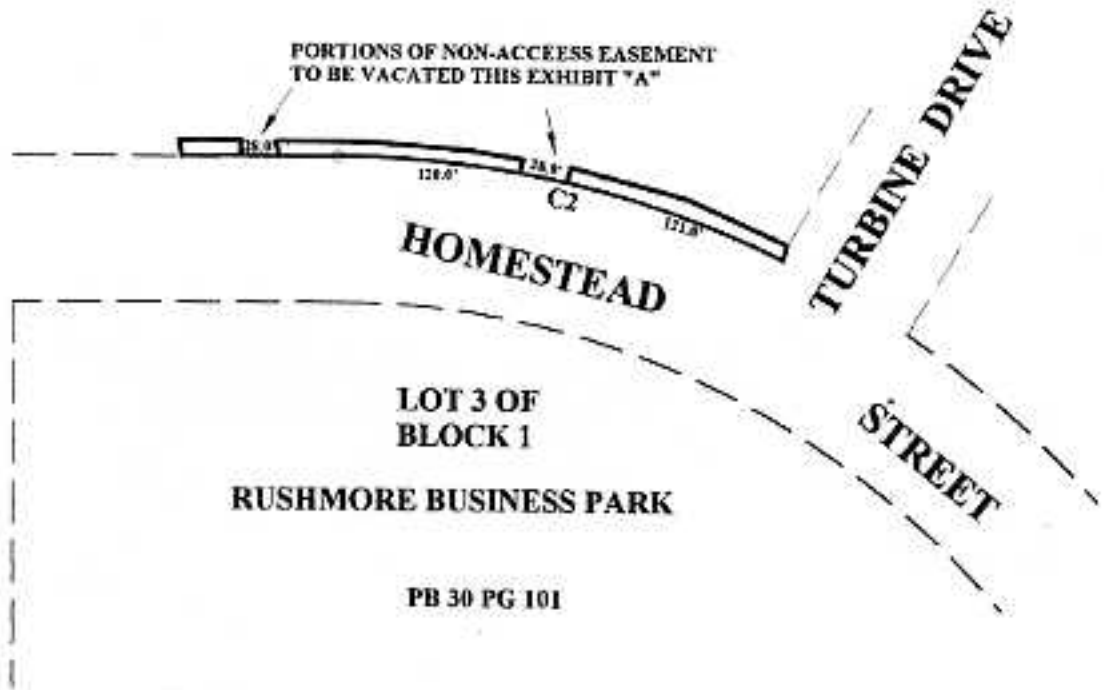
# EXHIBIT "A"

**LEGAL DESCRIPTION: LOT 3 OF BLOCK 1 OF RUSHMORE BUSINESS PARK LOCATED IN THE S1/2 OF THE NE1/4 OF SECTION 4, T1N, R8E, B.H.M., RAPID CITY, PENNINGTON COUNTY, SOUTH DAKOTA.**

**PURPOSE: TO VACATE THE PORTIONS OF THE NON-ACCESS EASEMENT SHOWN IN PLAT BOOK 30 PAGE 101 FILED AT THE PENNINGTON COUNTY REGISTER OF DEEDS.**



SCALE 1"=100'



## RECEIVED

JUL 26 2006

Rapid City Growth  
Management Department

