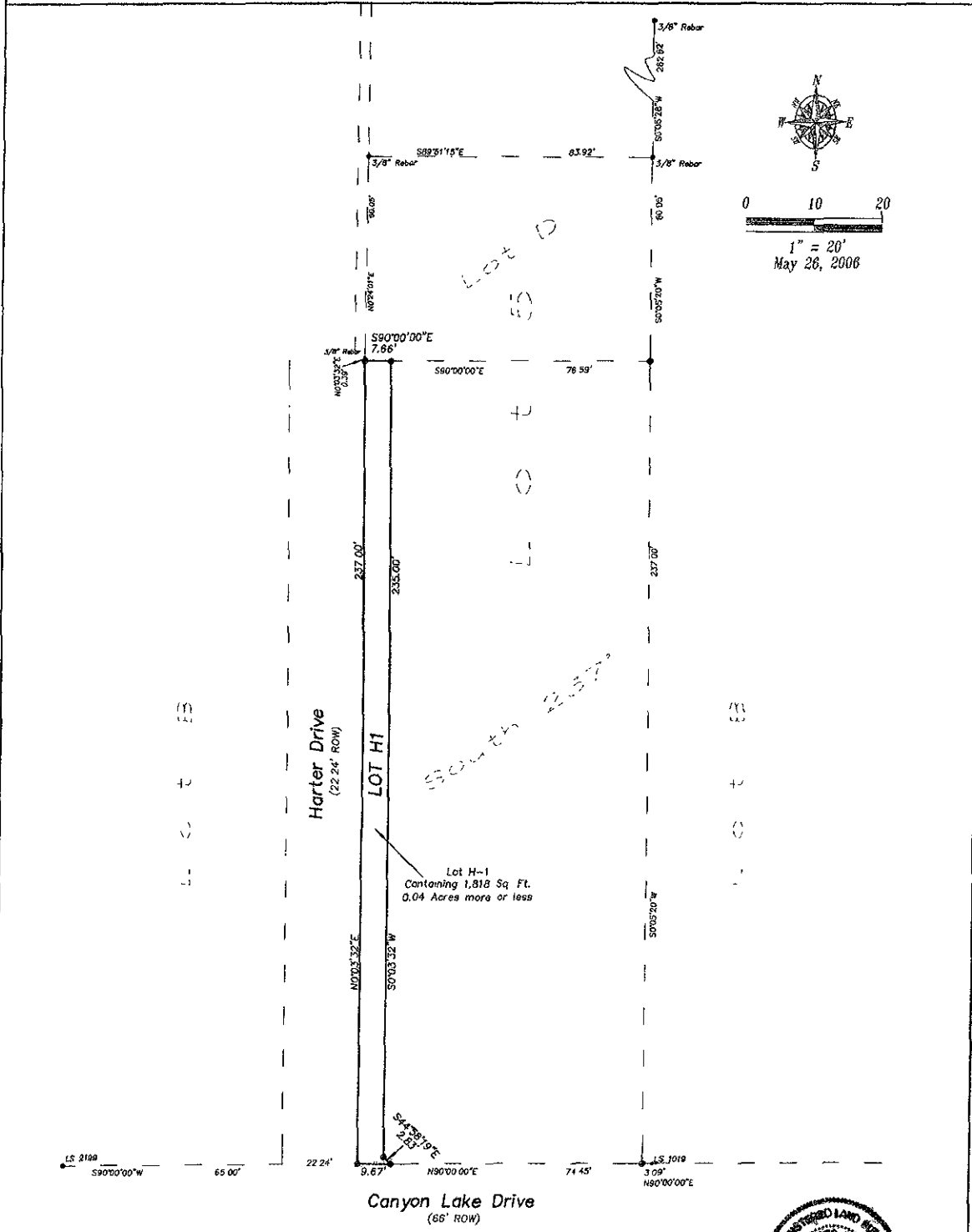


PLAT OF LOT H1

Showing a tract of land to be dedicated for highway purposes
in the South 237' of Lot 5 of the NW1/4 NE1/4 Secyion 3, T1N, R7E, BHM
Rapid City, Pennington County, South Dakota

Scale: 1" = 20'



SURVEYOR'S CERTIFICATE

I, Ronald W Fisk, Registered Land Surveyor in the State of South Dakota, do hereby state that, at the direction of the City of Rapid City, this tract of land as shown on this plat has been surveyed at my direction, and under my control, and such tract of land shall be hereafter known by the lot number designated herein. The location and dimensions of the tract are shown on this plat.

In witness whereof,
I have set my hand and seal this 20th day of May, 2006

R. W. Fisk
Ronald W Fisk
Registered Land Surveyor
Registration No. 6565

Fisk Land Surveying and
Consulting Engineers, Inc
P.O. Box 8154
Rapid City, SD 57702
(605) 348-1538



OFFICE OF REGISTER OF DEEDS

State of South Dakota
County of Pennington

Filed for record this ___ day of _____, 2006, at ___ m, and recorded in
Book of Plats ___ on Page ___ therein

Register of Deeds

by

Deputy