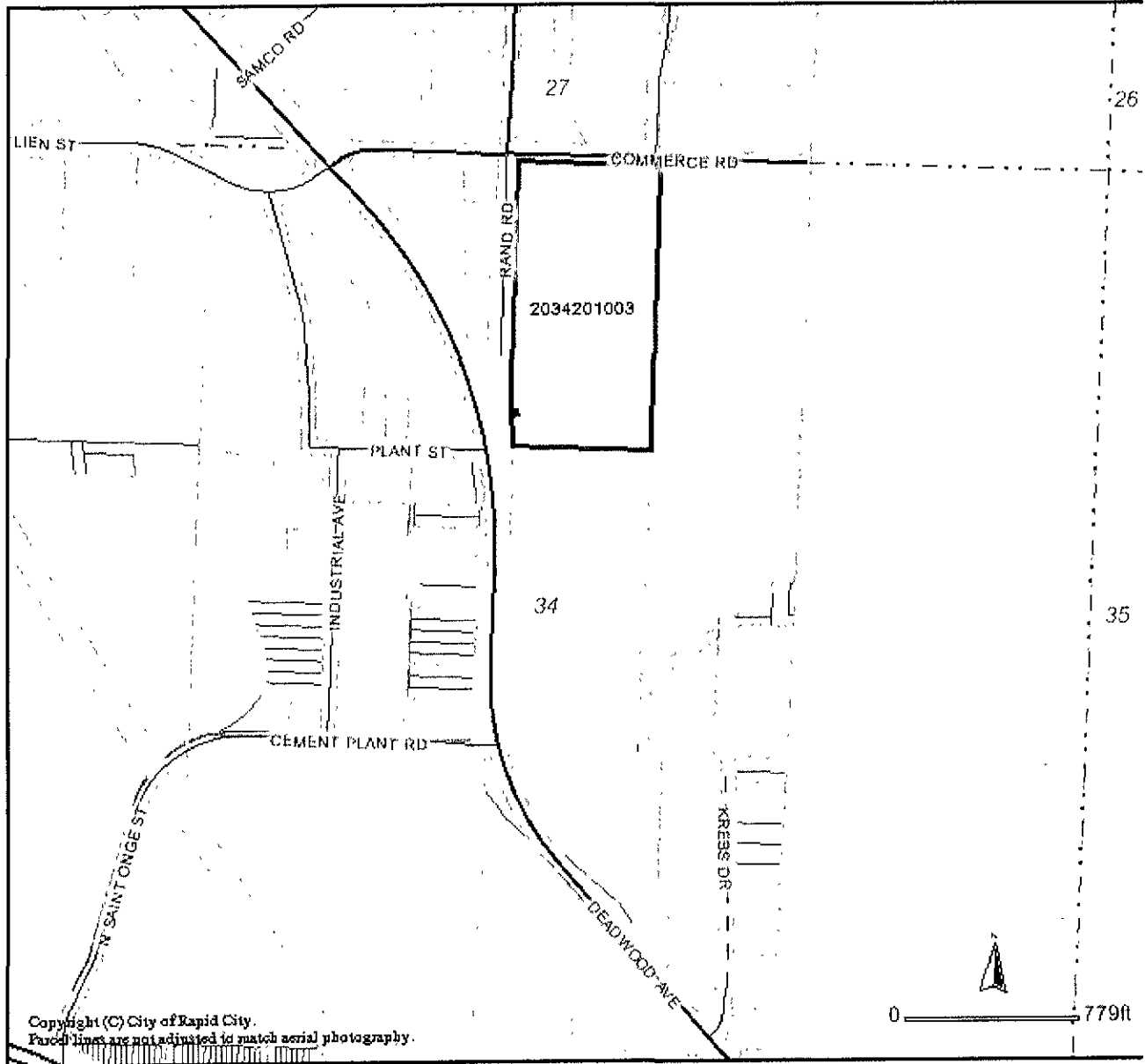


### Rapid City Geographic Information System



# EXHIBIT A

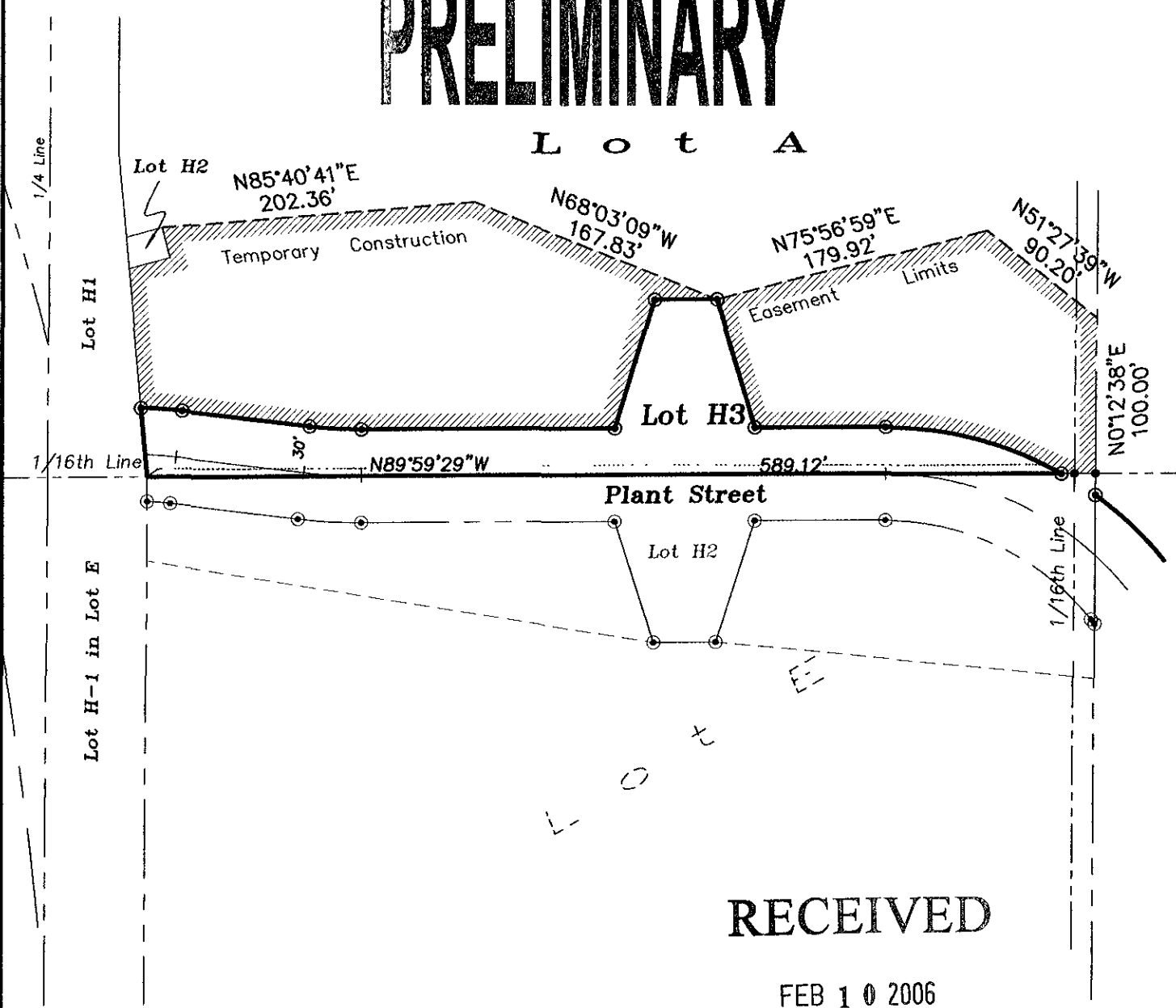
Temporary Construction Easement  
located in Lot A of NW1/4 NE1/4, Section 34, T2N, R7E, BHM,  
Rapid City, Pennington County, South Dakota



1"=100'

# PRELIMINARY

## Lot A



# RECEIVED

FEB 10 2006

Rapid City Growth  
Management Department