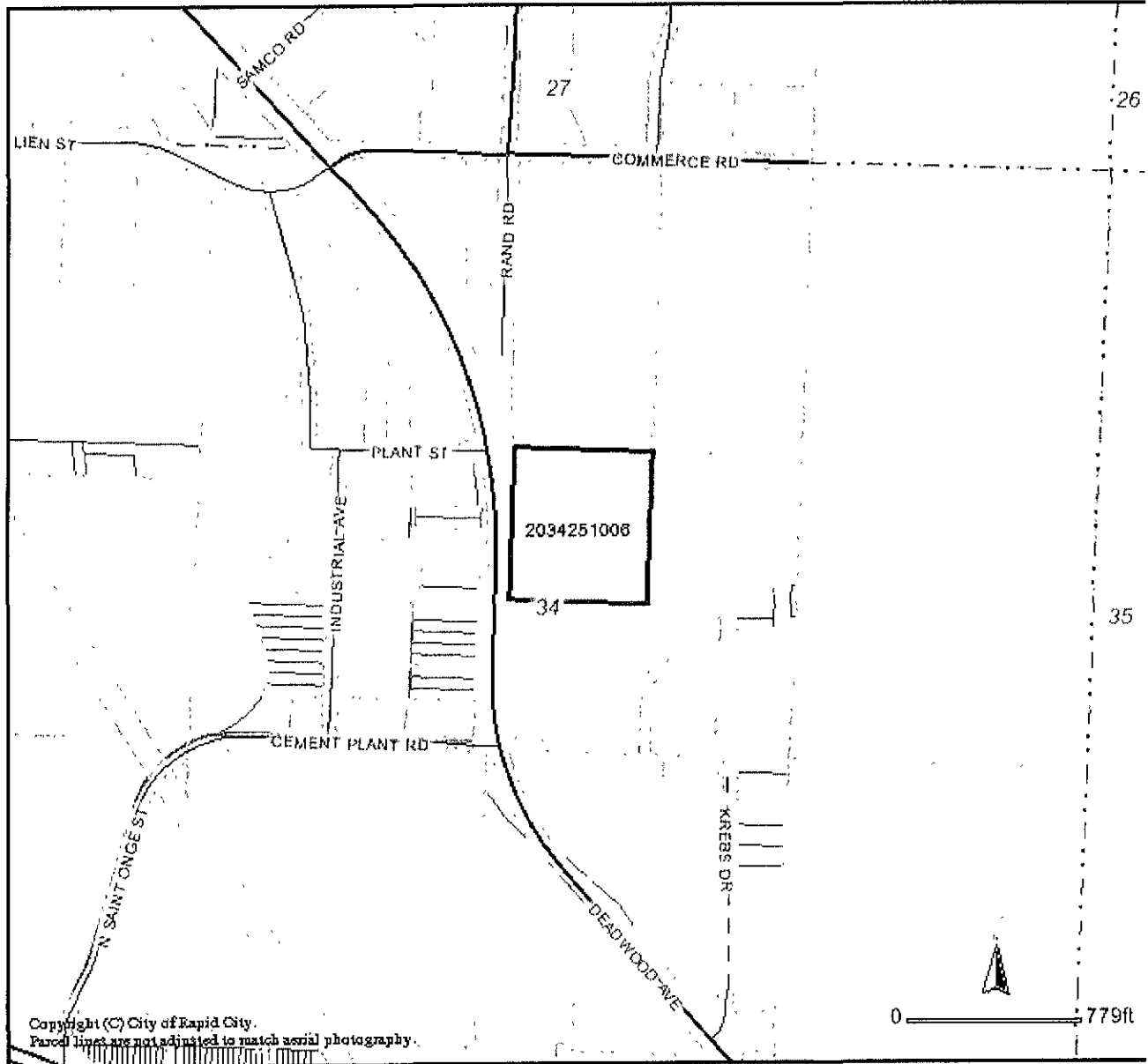


Rapid City Geographic Information System



Copyright (C) City of Rapid City.
Parcel lines are not adjusted to match aerial photography.

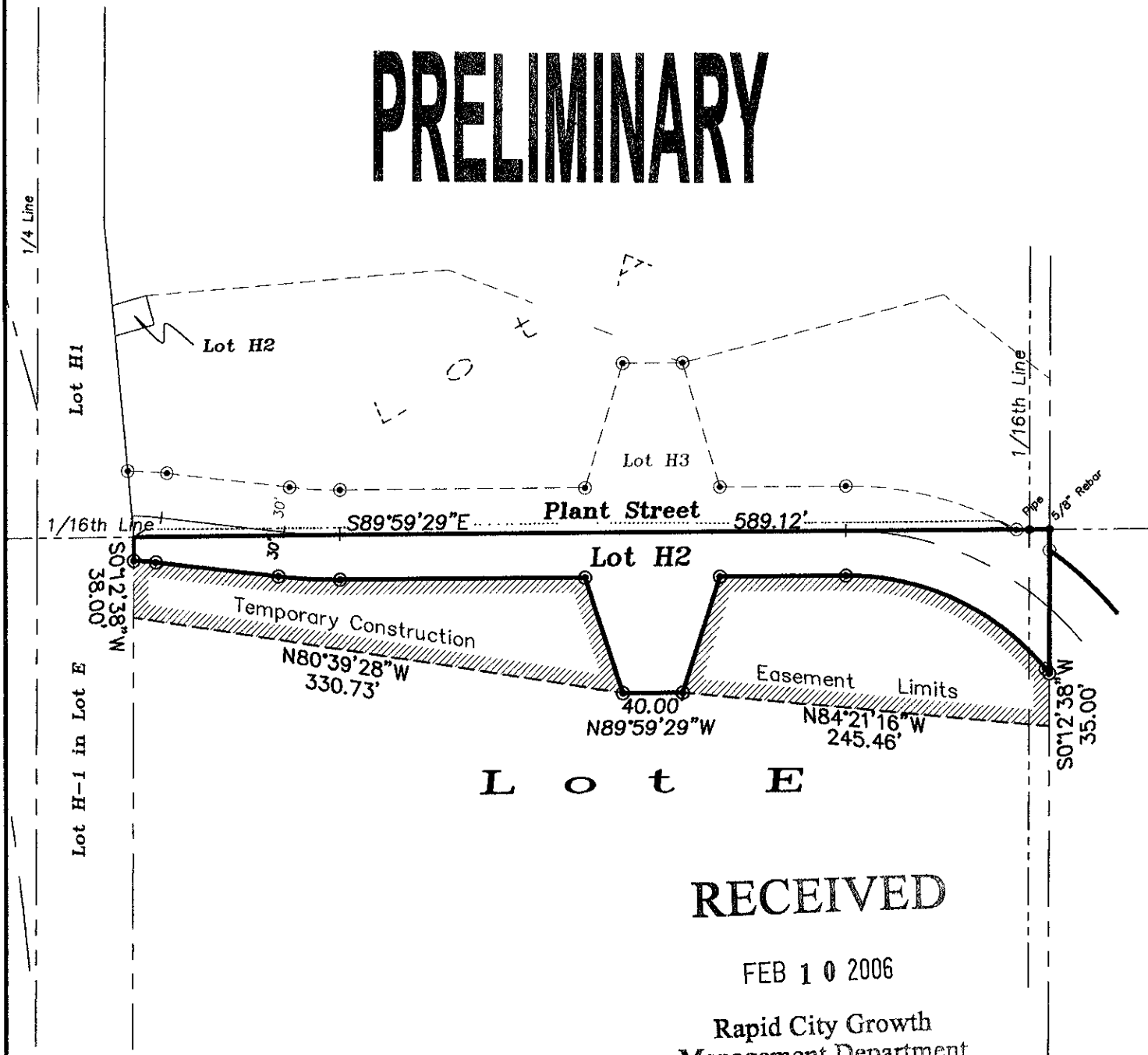
EXHIBIT A

Temporary Construction Easement
located in Lot E of SE1/4 NE1/4, Section 34, T2N, R7E, BHM,
Rapid City, Pennington County, South Dakota



1"=100'

PRELIMINARY



L o t E

RECEIVED

FEB 10 2006

Rapid City Growth
Management Department