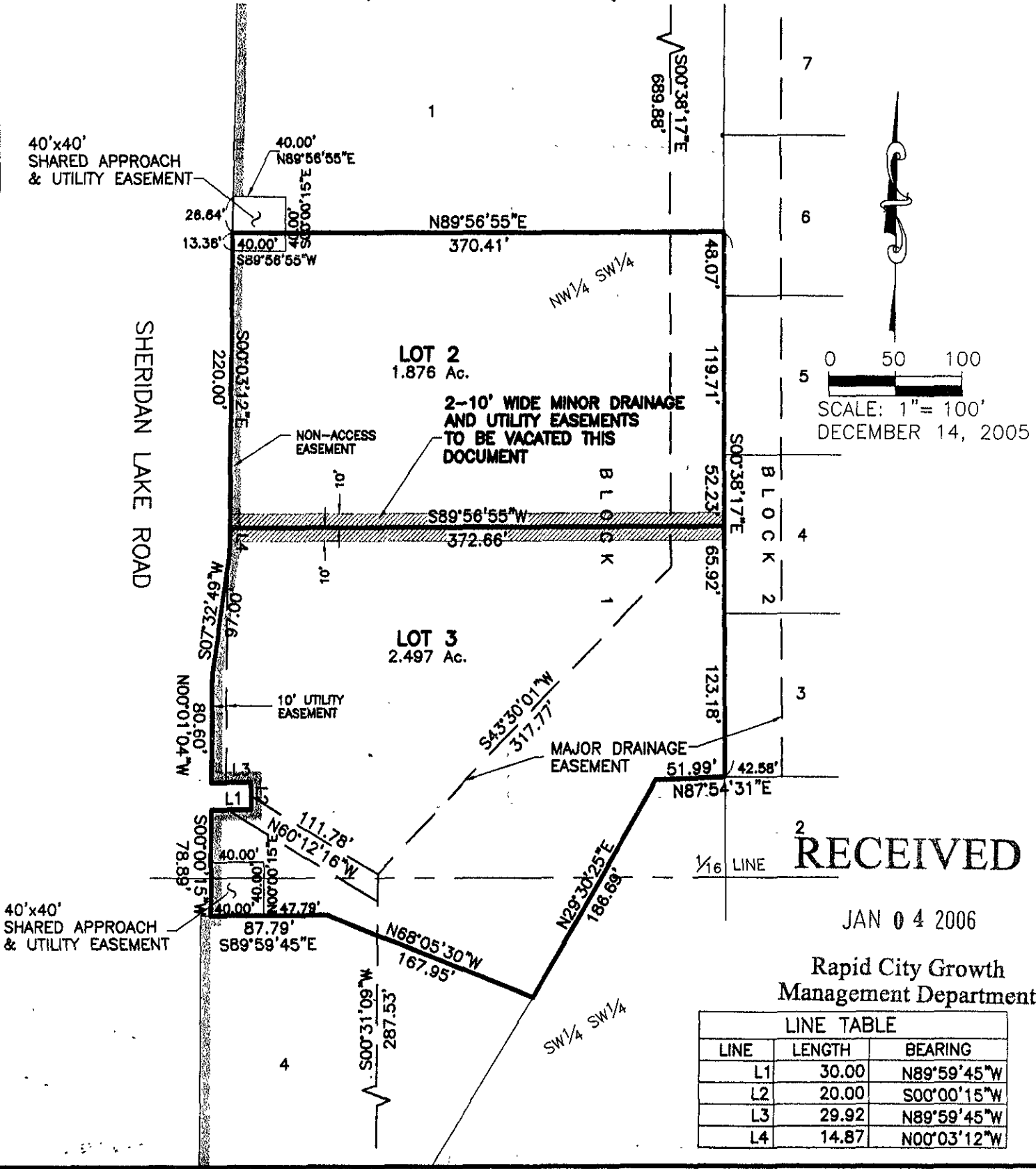


# EXHIBIT "A"

PROPOSED VACATION OF 2-10' WIDE MINOR DRAINAGE AND UTILITY EASEMENTS  
 LOCATED ON THE LOT LINE COMMON TO LOTS 2 AND 3 OF BLOCK 1,  
 STONEY CREEK SOUTH SUBDIVISION,  
 LOCATED IN THE NW 1/4 OF THE SW 1/4 AND THE SW 1/4 OF THE SW 1/4,  
 SECTION 22, T1N, R7E, B.H.M.  
 RAPID CITY, PENNINGTON COUNTY, SOUTH DAKOTA



**RECEIVED**

JAN 04 2006

Rapid City Growth Management Department

LINE TABLE		
LINE	LENGTH	BEARING
L1	30.00	N89°59'45"W
L2	20.00	S00°00'15"W
L3	29.92	N89°59'45"W
L4	14.87	N00°03'12"W