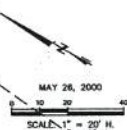
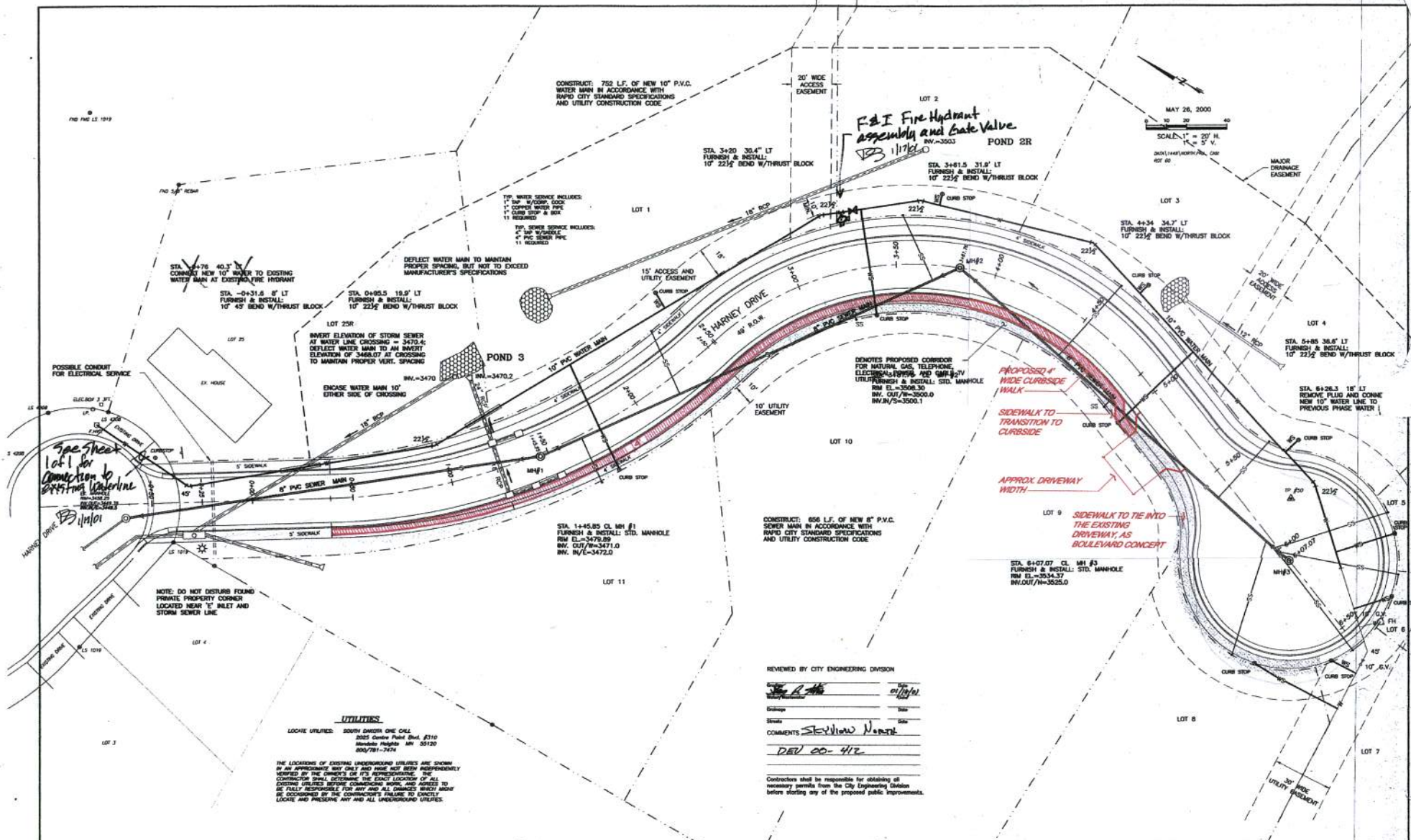


1:CAD (DRAWING) LOCAL (PROJECT) WORKSET: 1:FINAL (SHEET) DWG. MAY 26, 2000 2:17:33:30 2000



REVIEWED BY CITY ENGINEERING DIVISION

[Signature] Date: 5/24/00  
 [Signature] Date: 5/24/00  
 COMMENTS: SEE VIEW NORTH  
 DEL CO-412

Contractors shall be responsible for obtaining all necessary permits from the City Engineering Division before starting any of the proposed public improvements.

PREPARED FOR:  
**WYSS ASSOCIATES, INC.**  
 ATTN: ERIC HERDES  
 728 SIXTH STREET  
 RAPID CITY SD 57701  
 605/348-2286

LOCATION:  
**LOTS 1 - 11 OF BLOCK 2**  
**SKYVIEW NORTH SUBDIVISION; AND**  
**LOT 25R OF MINNEWASTA SUBD.**  
 LOCATED IN THE E1/4 OF THE SE1/4  
 SECTION 10, T14, R7E, B1M  
 RAPID CITY, PENNINGTON COUNTY, SOUTH DAKOTA



PREPARED BY:  
**Renner & Sperlich Engineering Co.**  
 816 Sixth St. • Rapid City, SD 57701 • 605/342-1181  
 FAX: 605/342-1405 • E-MAIL: RSE@RSPENET.COM

REVISIONS	
DATE	REVISION
7/19/00	CAD/ISSUANCE/REV
7/26/00	ENRAGE WATER MAINS/LOC
11/29/00	REV. SEWER MAIN
12/21/00	REV. SEW/WATER MAIN

PROJECT:  
**SKYVIEW NORTH**  
**HARNEY DRIVE EXTENSION**  
**SEWER/WATER IMPROVEMENTS**  
**PLAN: STA. 0+00 TO STA. 6+80**

SHEET
DESIGN: CIM
DESIGNED: DGS
APPROVED: DGS
JAN 01: 1450

SHEET  
**14**  
 OF  
**16**