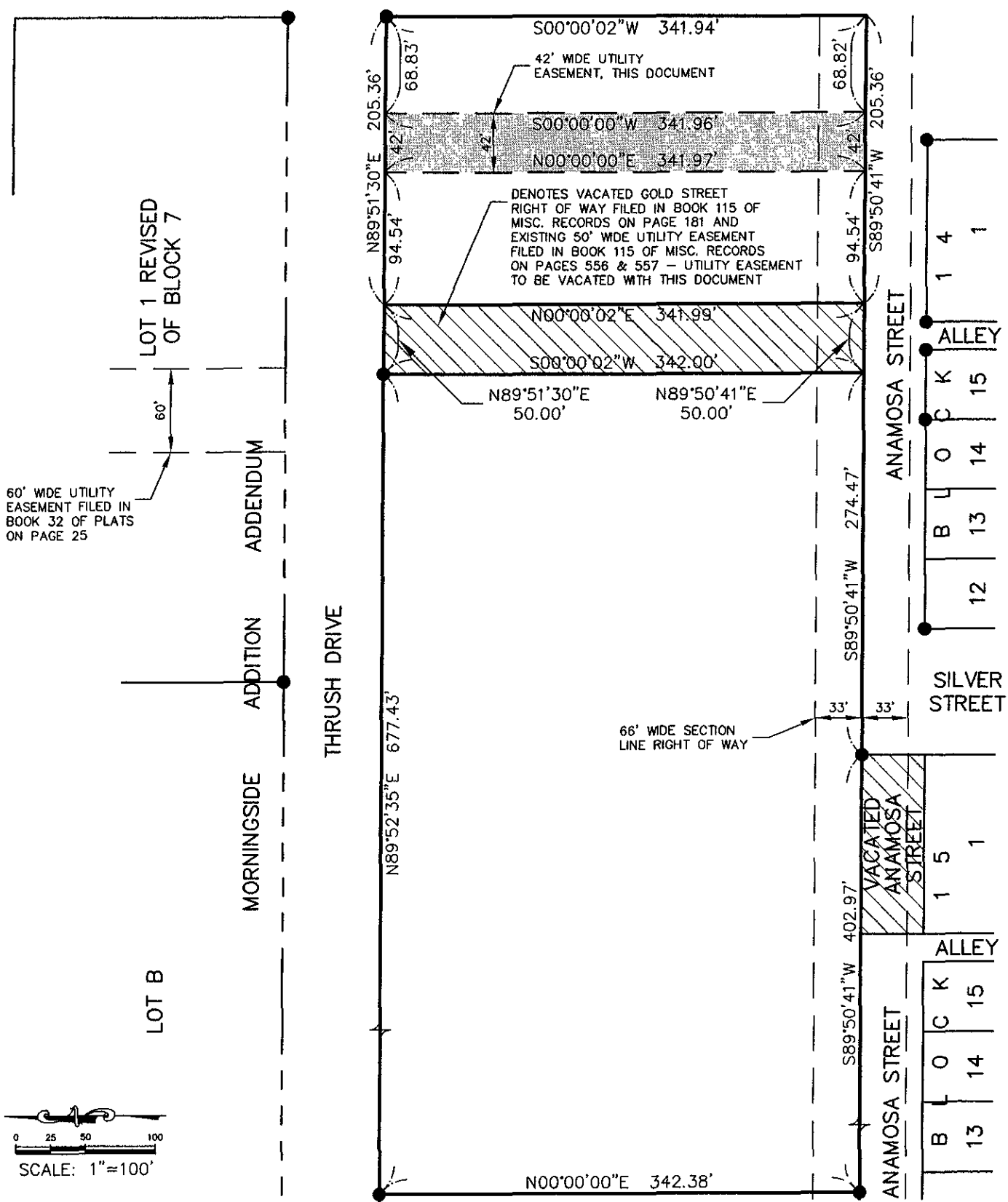


"EXHIBIT A"



UTILITY EASEMENT VACATION & DEDICATION
 W932' OF THE S377' OF THE SE1/4 SE1/4
 LESS THE N35' DEDICATED AS THRUSS DRIVE
 RAPID CITY, SOUTH DAKOTA

Surveyed By MM/JP/TE
 Date JUNE 2005
 Drawn By KJS
 Checked By DW
 Location
SE1/4 SECTION 26
T2N, R7E, B1M



FMG, Inc.
 3700 Sturgis Road
 Rapid City, SD 57702-0317
 (605) 342-4105 FAX (605) 342-4222
 www.fmgengineering.com