

Work Submitted to City of Rapid City Building Inspections for Permit File 1015704
 Reviewed & Approved by Planner Todd

NORTSTAR SUBDIVISION
 PLAT OF LOT 1 IN BLOCK 3
 LOCATED IN NE1/4-NE1/4
 OF SECTION 29, T2N, R8E,
 B.H.M. RAPID CITY,
 PENNINGTON COUNTY,
 SOUTH DAKOTA

PRELIMINARY - NOT FOR CONSTRUCTION

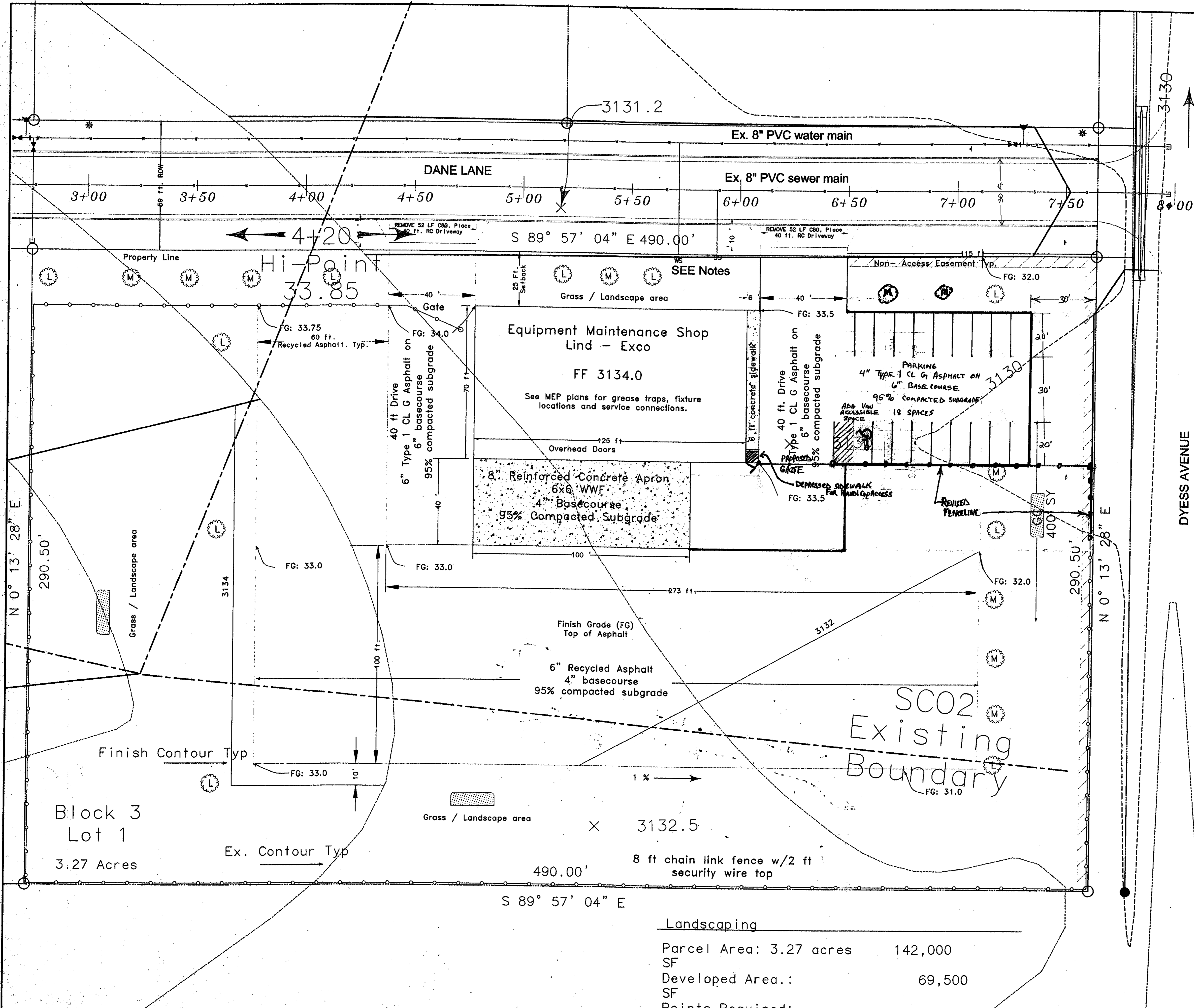
- NOTES:
- Reference building plans.
 - USE 1994 City of Rapid City Standard Specifications.
 - CONTACT CALL ONE prior to beginning work. OBTAIN work permit and coordinate with City Engineering prior to beginning work.
 - PROVIDE traffic control as needed. USE current edition of MUTCD.
 - COORDINATE with MEP plans prior to placing new services, post indicator valve and fire suppression systems. Coordinate with fire department.
 - Coordinate with all utility companies for service connections
 - OBTAIN Dust Control Permit.
 - PLACE sediment barriers prior to starting work. Topsoil and seed disturbed areas within 45 days.

Landscape Schedule:

- PROVIDE material list to city prior to planting.
- Large Tree: 10 (L)
 - Medium Tree: 10 (M)
 - Ground Cover: 400 SY (GC)
 - Total: 70,000 pts

REVIEWED BY CITY ENGINEERING DIVISION	
Grading	Date
Water/Wastewater	Date
Drainage	Date
Streets	Date
COMMENTS	
Contractors shall be responsible for obtaining all necessary permits from the City Engineering Division before starting any of the proposed public improvements.	

REF. City Development # 01-485 Northstar Subdivision



Landscaping

Parcel Area:	3.27 acres	142,000
SF		
Developed Area:		69,500
SF		
Points Required:		60,500

C:\CD 2004\Centerline\06002-0391\3005-Lot 1.dwg, Layout1, 1/14/2004 4:59:57 PM, Arch D - 24 x 36 in., 1:20