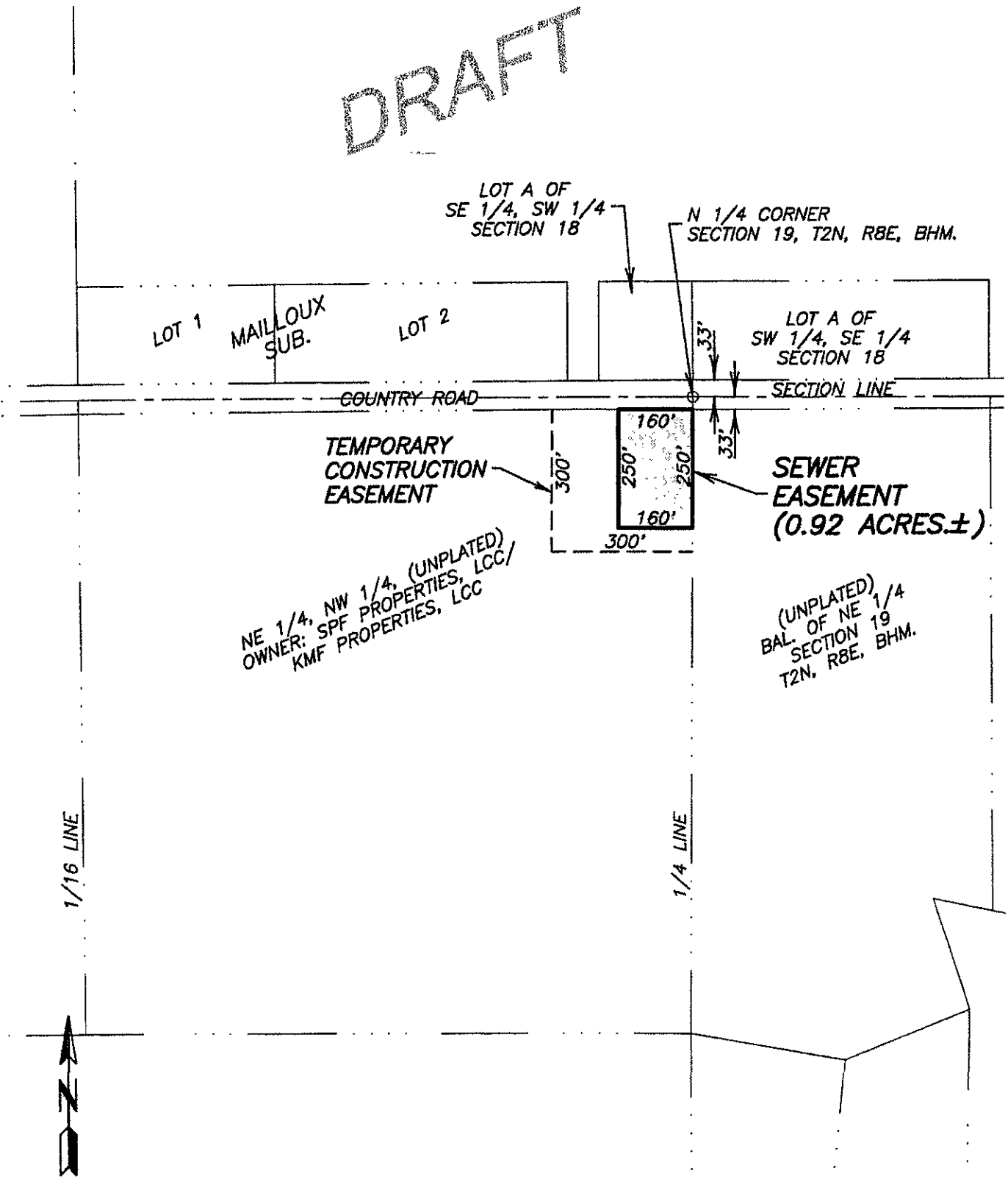


**EXHIBIT "A"**  
**PERMANENT SEWER EASEMENT**  
**LOCATED IN**  
**NE 1/4, NW 1/4, SECTION 19, T2N, R8E, BHM.**  
**PENNINGTON COUNTY, SOUTH DAKOTA**

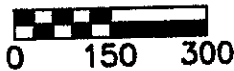
**DRAFT**



April 21, 2005 05:26:20 a.m.  
 Drawing: EXHIBIT A.DWG (PDS) (C:\VETEC\04126-01 PDS)

1/16 LINE

1/4 LINE



**FIGURE 1**  
**LIFT STATION EASEMENT**

