

# VACATION OF ACCESS EASEMENT

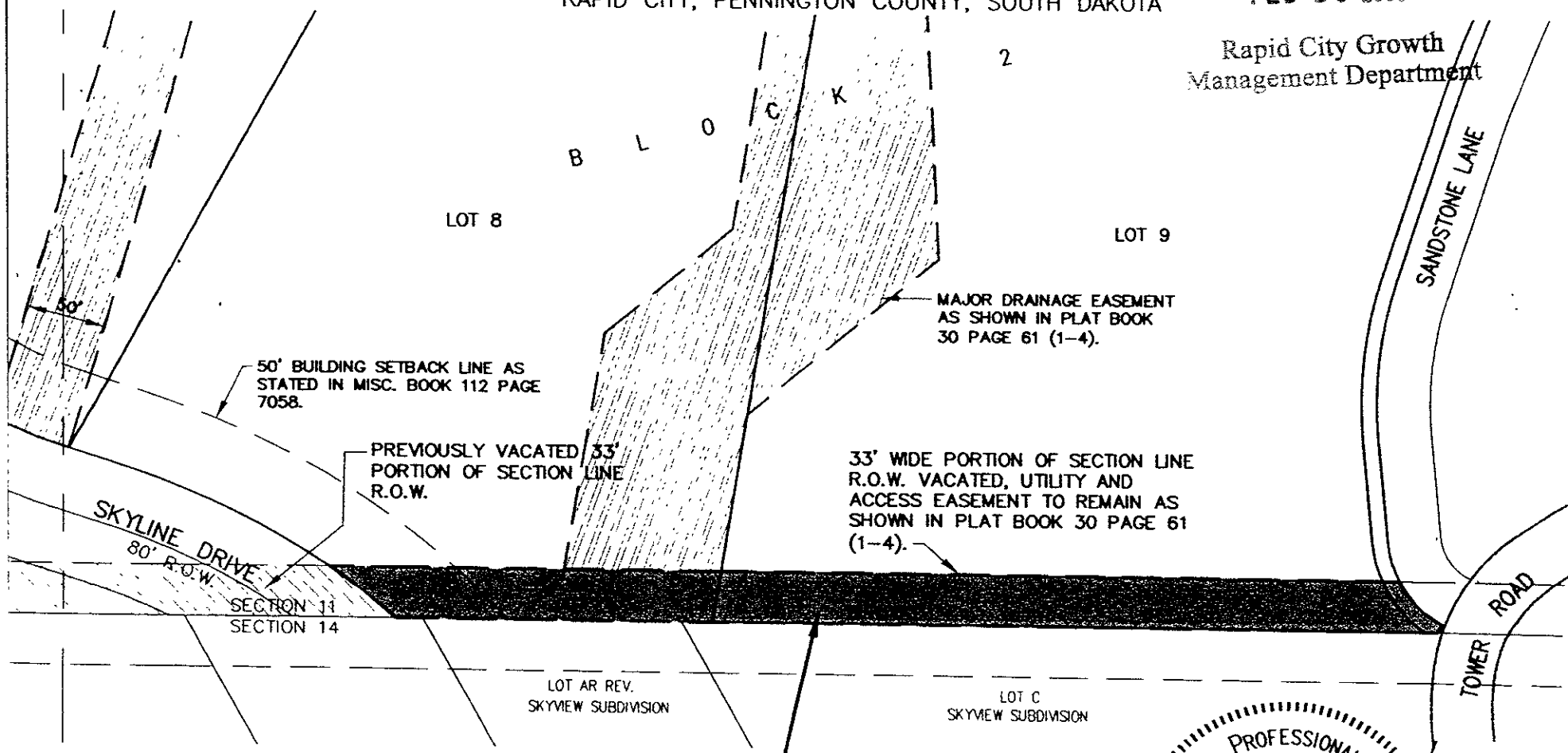
## LOTS 8 AND 9 OF BLOCK 2 OF SKYLINE PINES SUBDIVISION

LOCATED IN THE SE<sup>1</sup>/<sub>4</sub> OF THE SW<sup>1</sup>/<sub>4</sub>,  
SECTION 11, T1N, R7E, B.H.M.,  
RAPID CITY, PENNINGTON COUNTY, SOUTH DAKOTA

# RECEIVED

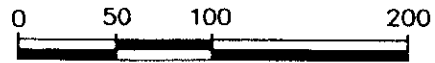
FEB 25 2005

Rapid City Growth  
Management Department



PORTION OF ACCESS EASEMENT TO  
BE VACATED THIS DOCUMENT. UTILITY  
EASEMENT TO REMAIN.

FEBRUARY 17, 2005



SCALE: 1" = 100'

