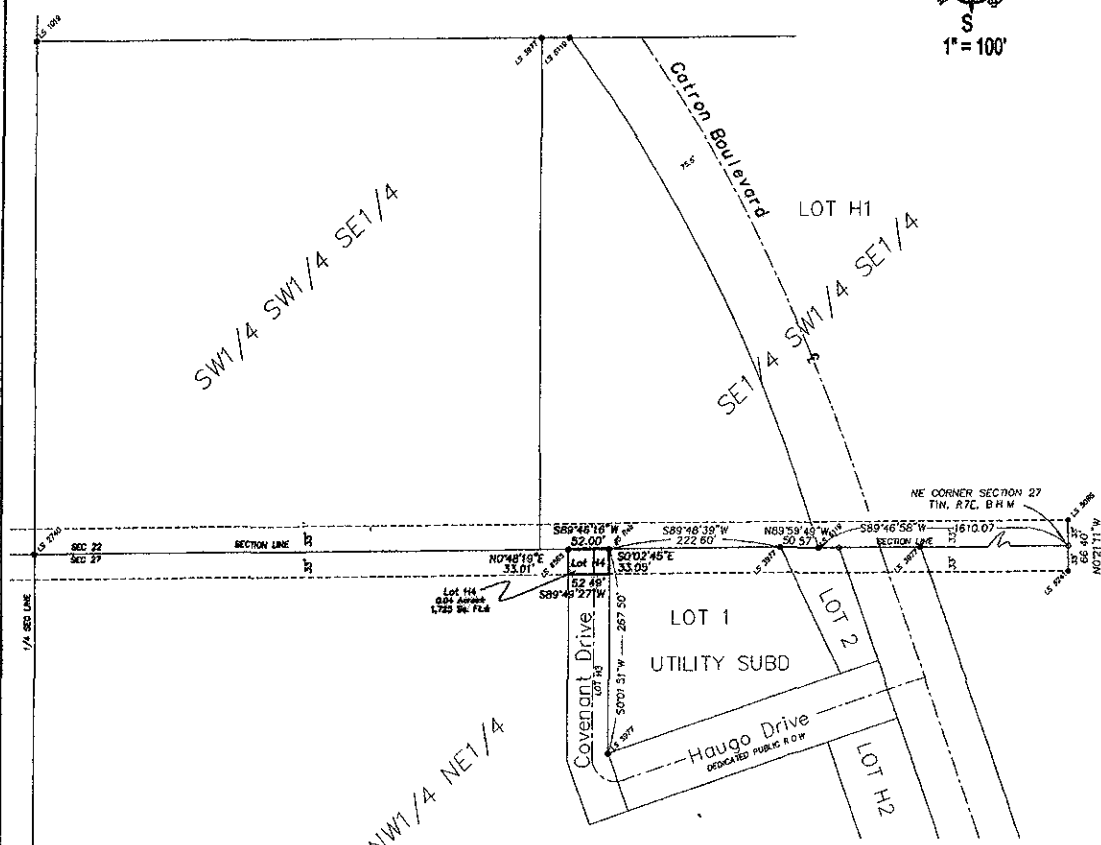
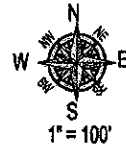


PLAT OF LOT H4

Showing a tract of land to be dedicated for highway purposes
in the NW 1/4 of the NE 1/4 of SECTION 27, T1N, R7E, B.H.M.
Rapid City, Pennington County, South Dakota

Scale: 1" = 100'



LEGEND
 • = Found survey monument as noted
 ○ = Calculated from previous plats
 ○ = Measured this survey
 N00°00'00"E

BASIS OF BEARINGS:
 NW corner of Lot 1 of Utility Subdivision
 to NE corner Sec. 27 T1N, R7E, BHM

See Plats:
 Book 9 HWY Page 118
 Book 9 HWY Page 136
 Book 9 HWY Page 137
 Book 9 HWY Page 138
 Book 22 Page 63
 Book 27 Page 48
 For Record Information

SURVEYOR'S CERTIFICATE

I, Ronald W. Fisk, Registered Land Surveyor in the State of South Dakota, do hereby state that, at the direction of the City of Rapid City, this tract of land as shown on this plat has been surveyed at my direction, and under my control, and such tract of land shall be hereafter known by the lot number designated herein. The location and dimensions of the tract are shown on this plat.

In witness whereof,
 I have set my hand and seal this En day of December, 2024

Ronald W. Fisk
 Ronald W. Fisk
 Registered Land Surveyor
 Registration No 4225

Fisk Land Surveying and
 Consulting Engineers, Inc.
 1020 W. Main
 Rapid City, SD 57702
 (605) 423-4611



OFFICE OF REGISTER OF DEEDS

State of South Dakota
 County of Pennington

Filed for record this ___ day of _____, 20___, at ___ m., and recorded in
 Book of Plats ___ on Page ___ therein.

Register of Deeds by Deputy