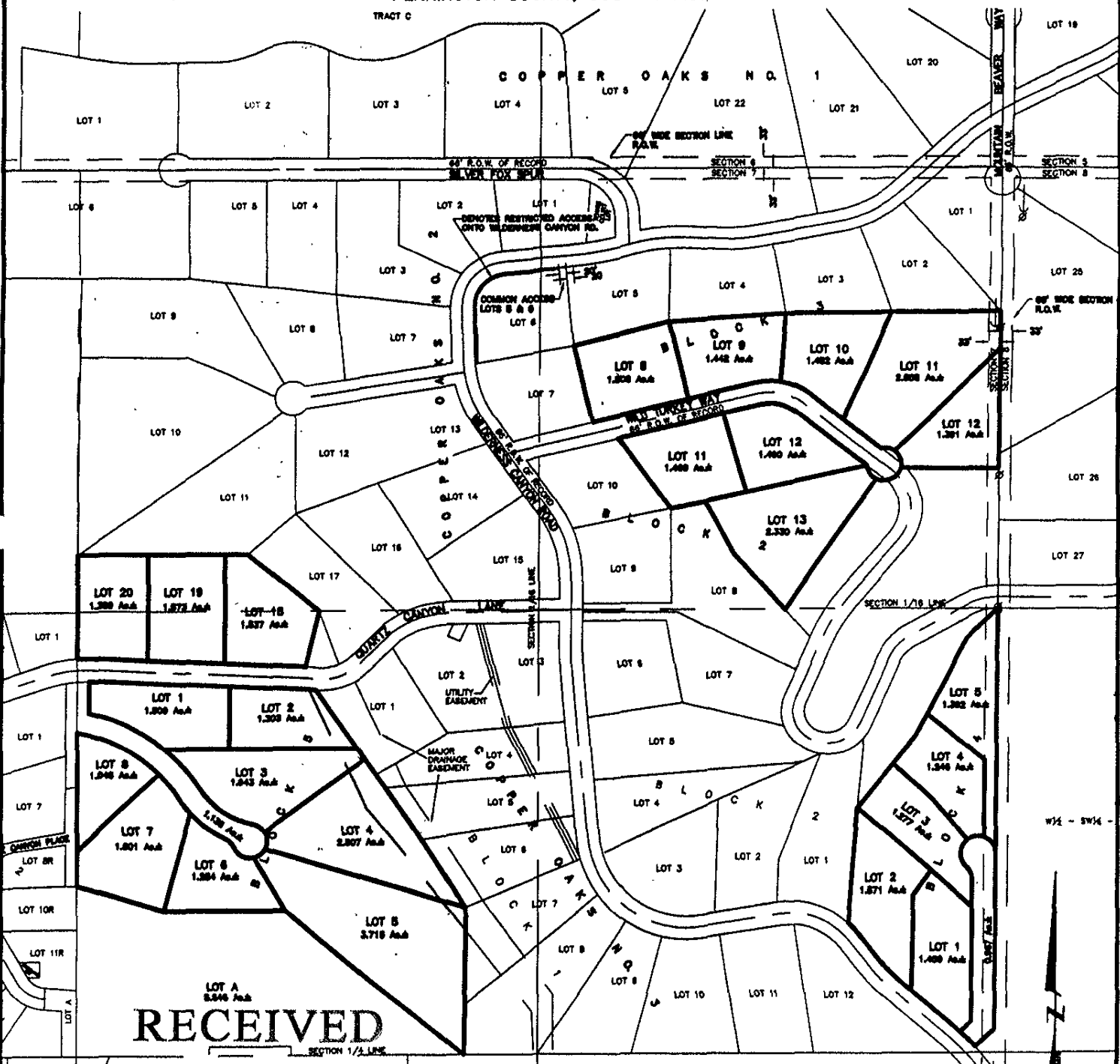


PLAT OF LOTS 18 THRU 20 OF COPPER OAKS SUBDIVISION NO. 2, LOTS 11 THRU 13 OF BLOCK 2, LOTS 8 THRU 12 OF BLOCK 3, LOTS 1 THRU 5 OF BLOCK 4, LOTS 1 THRU 8 OF BLOCK 5 AND LOT A, COPPER OAKS SUBDIVISION NO. 3

LOCATED IN THE NE 1/4,
 SECTION 7, T1S, R7E, BHM,
 PENNINGTON COUNTY, SOUTH DAKOTA



RECEIVED

DEC 30 2004

Rapid City Growth
 Management Department

SEPTEMBER 21, 2004
 SCALE: 1" = 400'