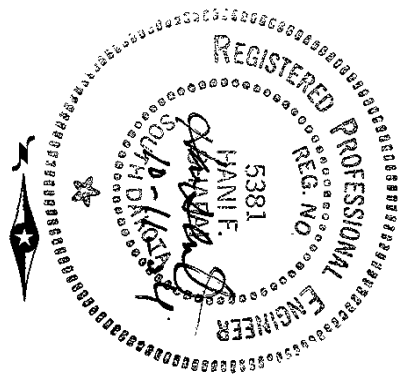
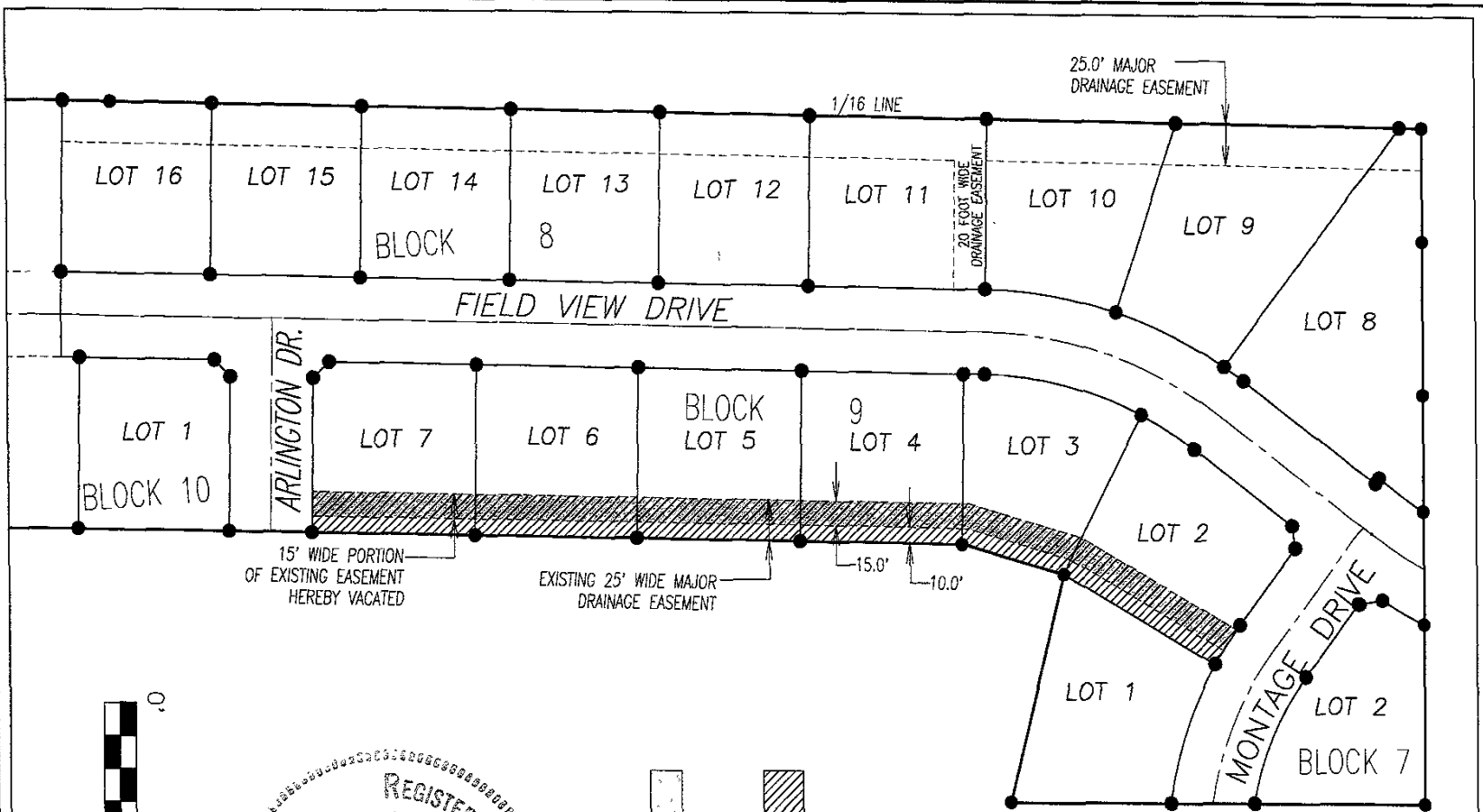



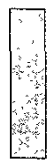
DRAINAGE EASEMENT VACATION

JOB NO: 04-0029
 DATE: 9-28-04
 DRAWN BY: DCL

REV 1: 10/11/04 RDC
 REV 2:
 REV 3:



 EXISTING 25' WIDE DRAINAGE EASEMENT

 PORTION OF EXISTING EASEMENT HEREBY VACATED

04VE021

D.D.I.
DREAM DESIGN INTERNATIONAL, INC.
 PROFESSIONAL STRUCTURAL & CIVIL ENGINEERING CONSULTANTS

528 KANSAS CITY ST., SUITE 4, BEAHD CITY, SD 57701
 PH. 605-946-0550 FAX. 605-946-0446 EMAIL: eng@dreamdesigninternational.com