

No. PW060104-03

EXHIBIT A

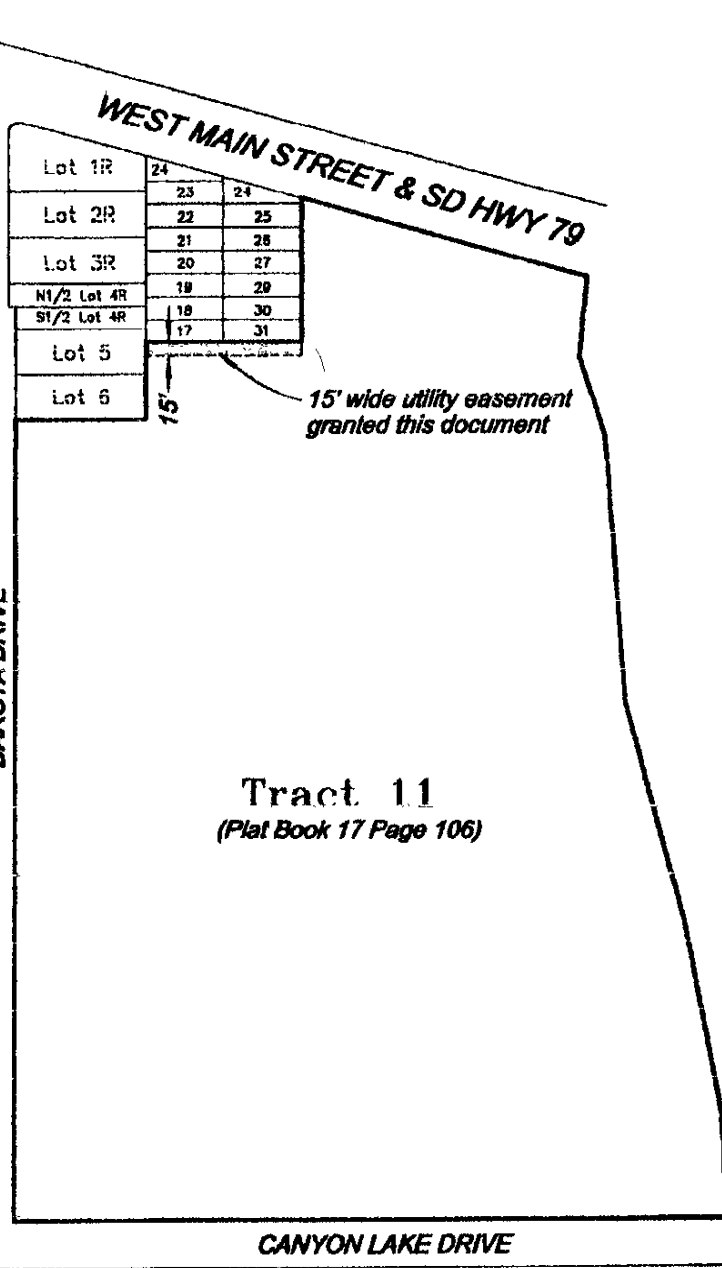
UTILITY EASEMENT
TRACT 11, RAPID CITY GREENWAY TRACTS
LOCATED IN SECTION 3, T1N, R7E, BHM
RAPID CITY, PENNINGTON COUNTY, SOUTH DAKOTA



1"=200'

PRELIMINARY

DAKOTA DRIVE



PRELIMINARY

PREPARED BY:
FISK LAND SURVEYING & CONSULTING ENGINEERS, INC.
P.O. BOX 8154, RAPID CITY, SD 57709 (605) 348-1538 APRIL 6, 2004

NO. 99-02-01

19

CABLE/COMM.

18

Asphalt Drive and Parking

17

g
39.5'

Concrete Block Retaining Wall
Wood Fence and Refuse Enclosure

APPROX. 150' (VERIFY)

ROUTE TO LOCATIONS
ACCEPTABLE TO UTILITY
COMPANIES.

UNDERGROUND
LOW VOLTAGE CONDUIT

CARSON L-SERIES LOW VOLTAGE VAULT, SIZED AND PROVIDED BY E.C.

MAIN DISCONNECT

MAIN POWER

Park Stop
(Typical)

