

04VE011

EXHIBIT "A"

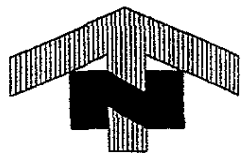
Vacation of a portion of the
10' wide utility easement
in Lot 3 of Parker's Subdivision,
in the NW¼ SW¼ Sec. 10
T1N, R8E, BMH, Pennington
County, South Dakota

Tulip Street

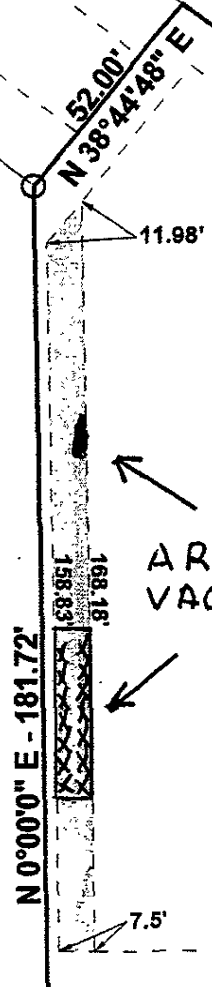
Railroad R.O.W.

SD Highway 44

Prepared By:
Jerry J. Wendland
6909 Ridgeview Dr.
Black Hawk, SD
57718



1"=40'



11.98'

AREA TO
VACATE

7.5'

Lot 3

10' wide utility easements
each side of all interior lot lines

S 89°35'31" W
306.21'