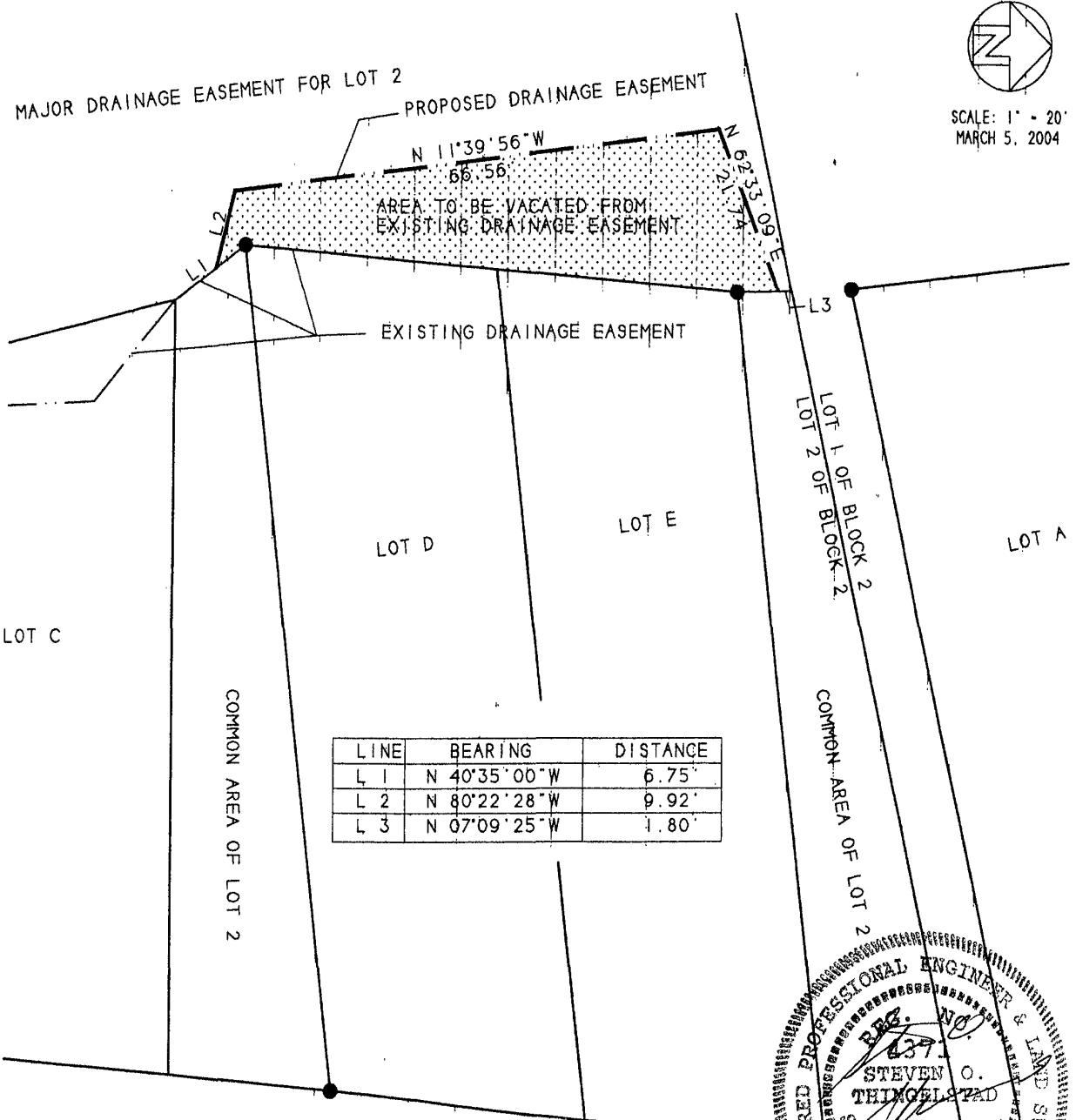


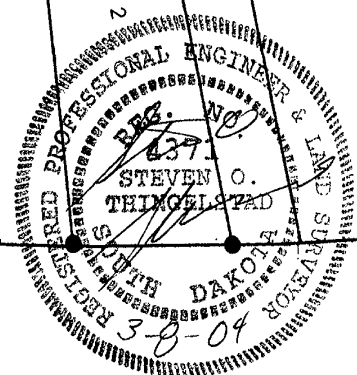
EXHIBIT 'A'  
 OF  
 PARTIAL VACATION OF MAJOR DRAINAGE EASEMENT  
 OF LOT 2 OF BLOCK 2 OF PARKRIDGE VILLAGE SUBDIVISION NO. 2  
 LOCATED IN THE NW 1/4 OF THE NE 1/4 OF  
 SECTION 16, T1N, R7E, BHM  
 RAPID CITY, PENNINGTON COUNTY, SOUTH DAKOTA



SCALE: 1" = 20'  
 MARCH 5, 2004



LINE	BEARING	DISTANCE
L 1	N 40°35'00"W	6.75'
L 2	N 80°22'28"W	9.92'
L 3	N 07°09'25"W	1.80'



PREPARED BY: STEVEN O. THINGELSTAD  
 BRITTON ENGINEERING & LAND SURVEYING, INC  
 11750 NORTH HIGHWAY 79, BLACK HAWK, SD  
 57701 - TELEPHONE: (605) 388-0561

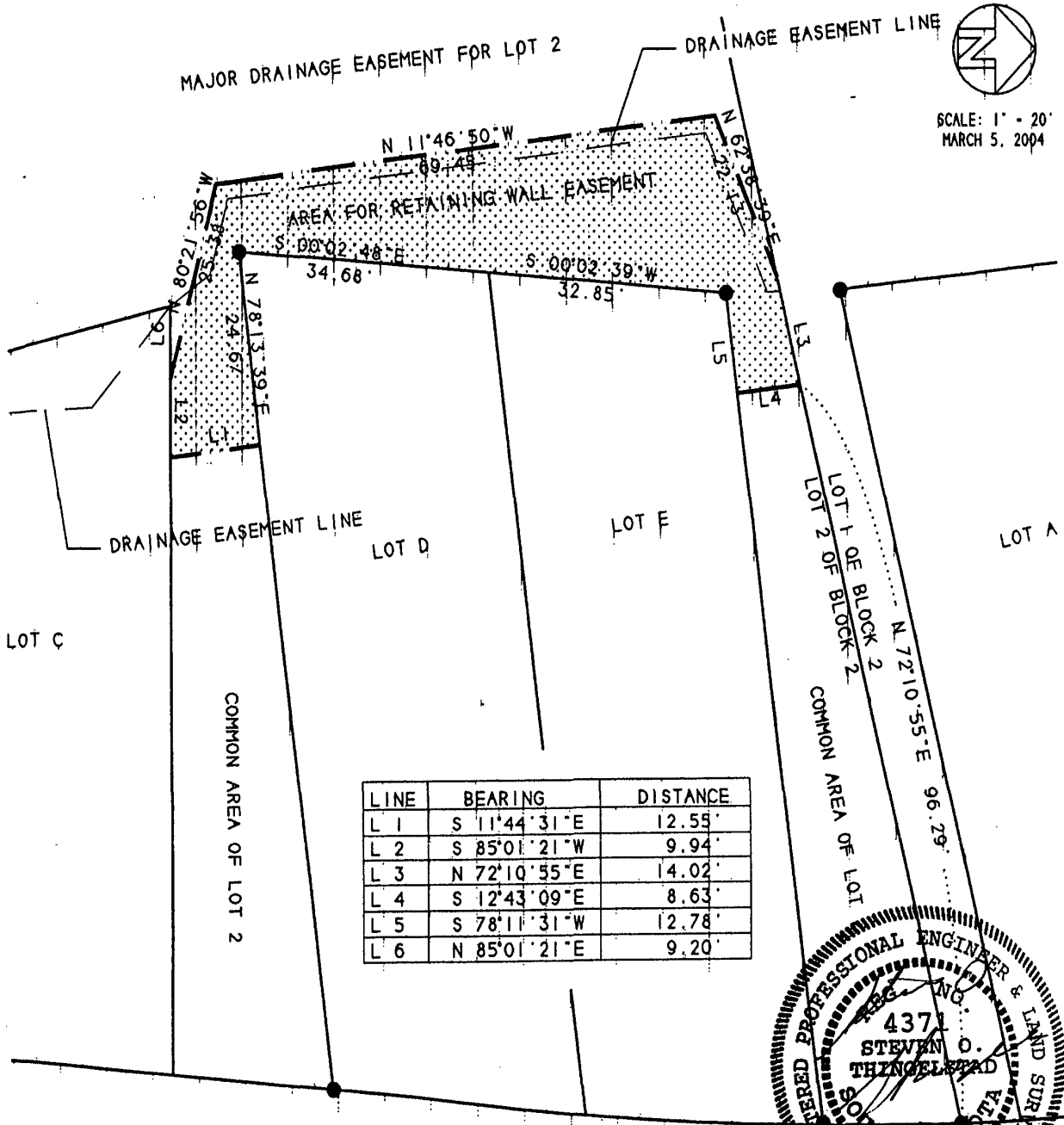
EXHIBIT 'A'  
OF

EASEMENT FOR RETAINING WALL  
IN THE COMMON AREA OF  
LOT 2 OF BLOCK 2 OF PARKRIDGE VILLAGE SUBDIVISION NO. 2  
LOCATED IN THE NW 1/4 OF THE NE 1/4 OF  
SECTION 16, T1N, R7E, BHM  
RAPID CITY, PENNINGTON COUNTY, SOUTH DAKOTA

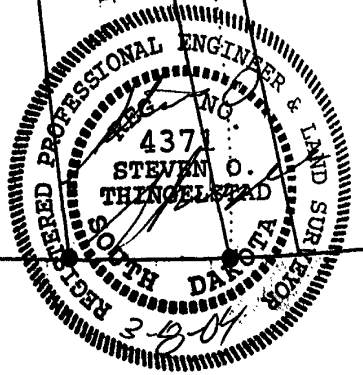
Book: 129  
Page: 3835  
R04- 5534.0 Page: 003 of 003  
03/25/2004 11:20a 24.00  
Pennington County, South Dakota  
Donna M. Mayer Misc Real Est



SCALE: 1" = 20'  
MARCH 5, 2004



LINE	BEARING	DISTANCE
L 1	S 11°44'31" E	12.55'
L 2	S 85°01'21" W	9.94'
L 3	N 72°10'55" E	14.02'
L 4	S 12°43'09" E	8.63'
L 5	S 78°11'31" W	12.78'
L 6	N 85°01'21" E	9.20'



PREPARED BY: STEVEN O. THINGELSTAD  
BRITTON ENGINEERING & LAND SURVEYING, INC  
11750 NORTH HIGHWAY 79, BLACK HAWK, SD  
57701 - TELEPHONE: (605) 388-0561