

Remove Items (Incidental Work)

- 10+94.3 - 19.0'L To 11+37.1 - 18.2'L: Remove Landscape Curb (45')
- 11+62.3 - 17.6'L To 12+70 - 16.1'L: Remove Landscape Curb (110')
- 12+90.0 - 17.6'L To 13+28.4 - 18.1'L: Remove Landscape Curb (40')
- 14+25.5 - 21.4'R To 14+24.8 - 44.4'R: Remove Landscape Curb (25')
- 14+37.0 - 44.6'R to 14+44.4 - 23.0'R: Remove Landscape Curb (25')

Remove and Reset/Relocate Items (Incidental Work)

- 11+93.9 - 15.0'L: Remove and Reset Mailbox
- 12+66.5 - 16.5'L: Remove and Reset Mailbox
- 13+36 - 20'L: Remove and Reset Speed Limit Sign
- 13+91.5 - 16.3'L: Remove and Reset Mailbox
- 13+92.0 - 27.6'R: Remove and Reset Sign
- 15+14.6 - 19.2'L: Remove and Reset Sign

Culvert Removal

- 14+23.6 - 18.7'R To 14+49.1 - 21.0'R: Remove 12" CMP (24')

Remove Items

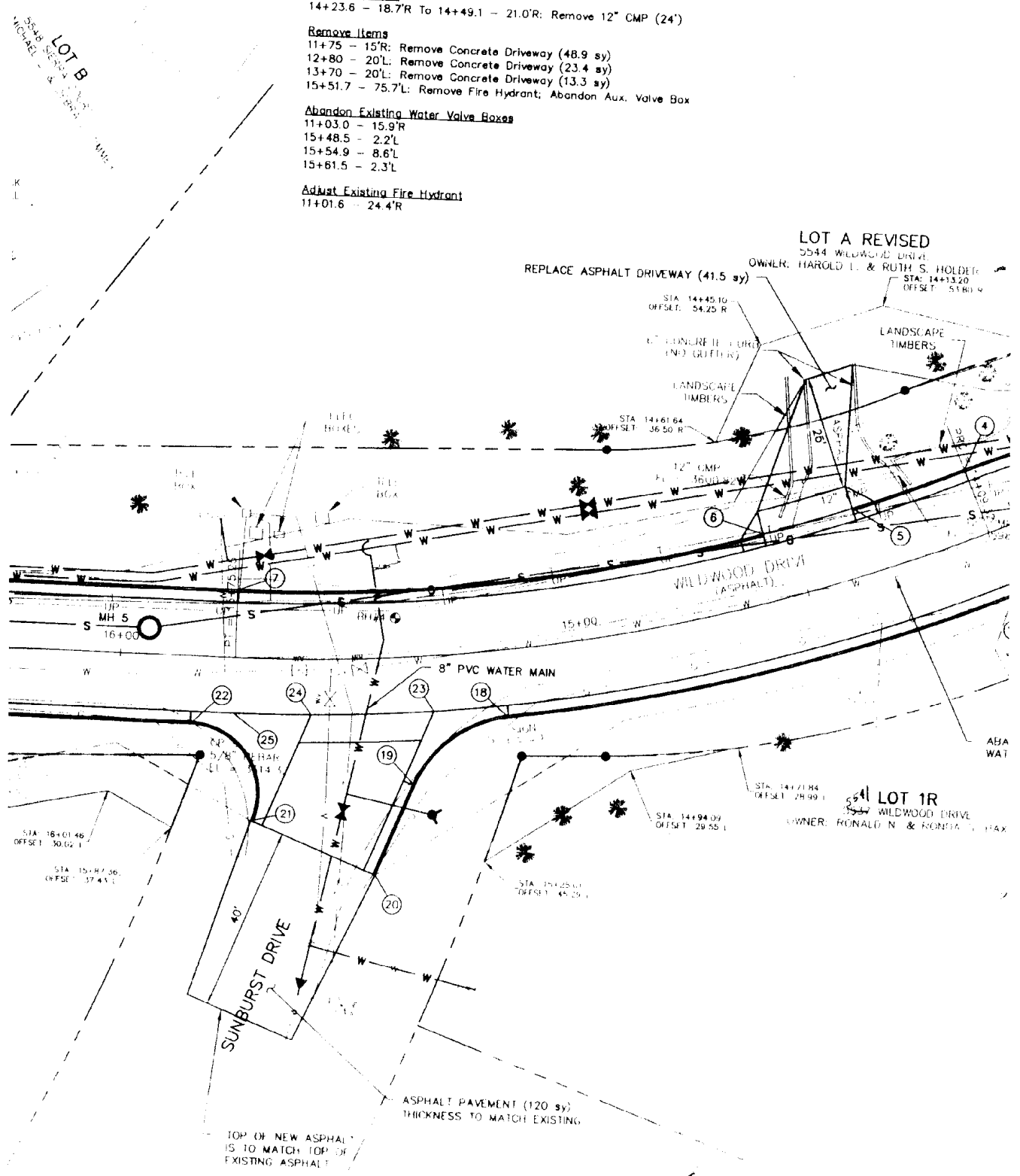
- 11+75 - 15'R: Remove Concrete Driveway (48.9 sy)
- 12+80 - 20'L: Remove Concrete Driveway (23.4 sy)
- 13+70 - 20'L: Remove Concrete Driveway (13.3 sy)
- 15+51.7 - 75.7'L: Remove Fire Hydrant; Abandon Aux. Valve Box

Abandon Existing Water Valve Boxes

- 11+03.0 - 15.9'R
- 15+48.5 - 2.2'L
- 15+54.9 - 8.6'L
- 15+61.5 - 2.3'L

Adjust Existing Fire Hydrant

- 11+01.6 - 24.4'R



**LOT A REVISED**  
 5544 WILDWOOD DRIVE  
 OWNER: HAROLD L. & RUTH S. HOLDEE  
 STA: 14+13.20  
 OFFSET: 51.80 R

**LOT 1R**  
 5544 WILDWOOD DRIVE  
 OWNER: RONALD N. & RONITA L. FAX

5508  
**Topdeck**

11+57.54 - 14.67'R  
 End Str. C & G

14+09.32 - 14.67'R  
 End. 204.20' C

15+75.25 - 14.67'R  
 P.I. 385.33' Road C & G  
 Begin Str. C & G  
 TC EI=3614.96

11+61.30 - 14.67'  
 End Str. type P Gutter  
 Begin Str. C & G  
 TC EI=3576.28