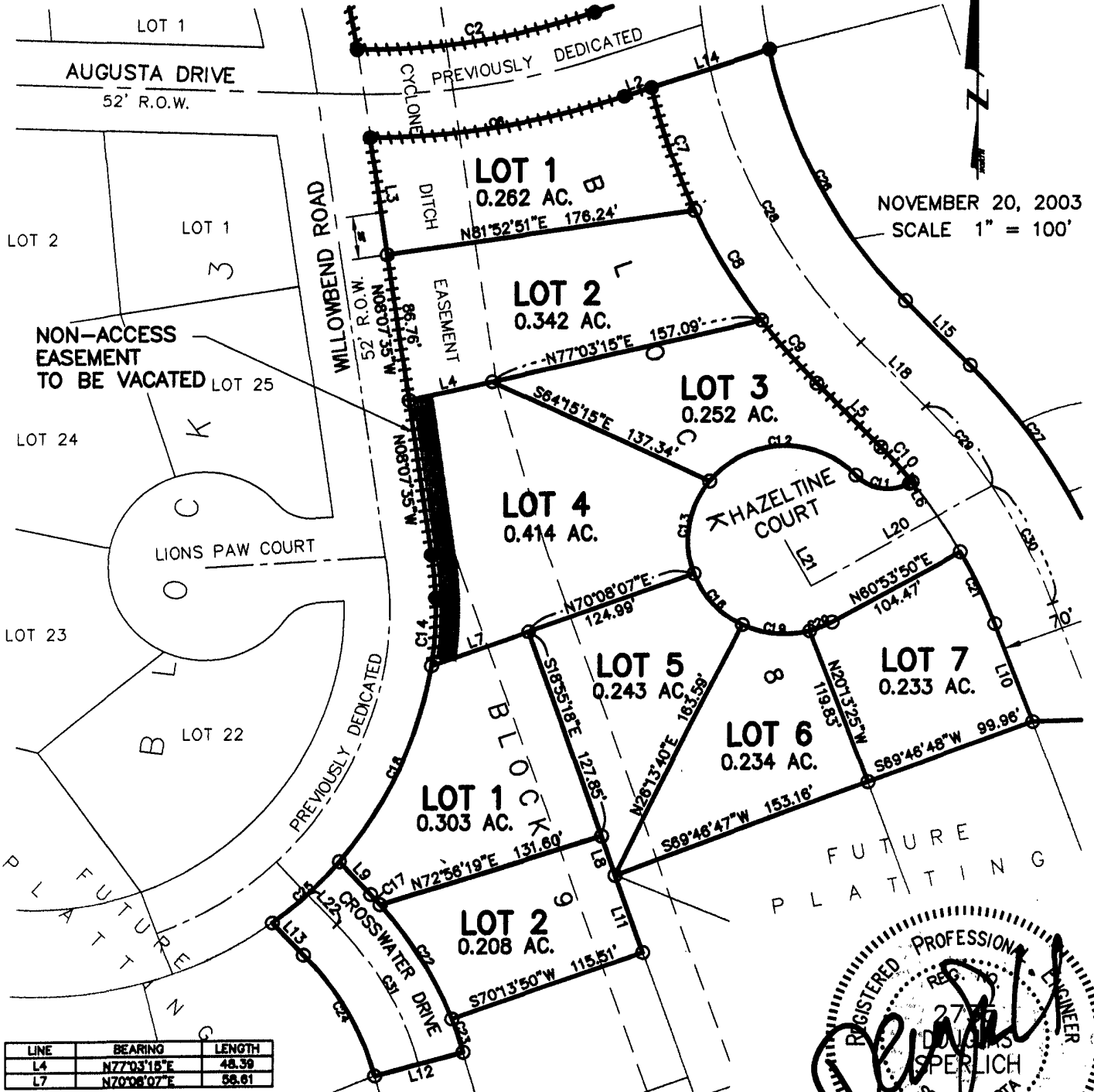


EXHIBIT "A"

PROPOSED VACATION OF NON-ACCESS EASEMENT
 LOT 4 OF BLOCK 8 OF ELKS COUNTRY ESTATES SUBDIVISION
 IN THE E½ OF SECTION 16, T1N, R8E, BHM
 RAPID CITY, PENNINGTON COUNTY, SOUTH DAKOTA



NOVEMBER 20, 2003
 SCALE 1" = 100'

LINE	BEARING	LENGTH
L4	N77°03'15"E	48.39
L7	N70°08'07"E	56.61

CURVE	LENGTH	RADIUS	DELTA	CHORD BEARING	CHORD DISTANCE
C13	56.50	55.00	58°31'23"	S09°33'48"W	54.05
C14	40.80	226.79	10°15'27"	N03°20'34"E	40.55
C15	25.11	226.79	6°20'34"	N04°37'05"W	25.09

